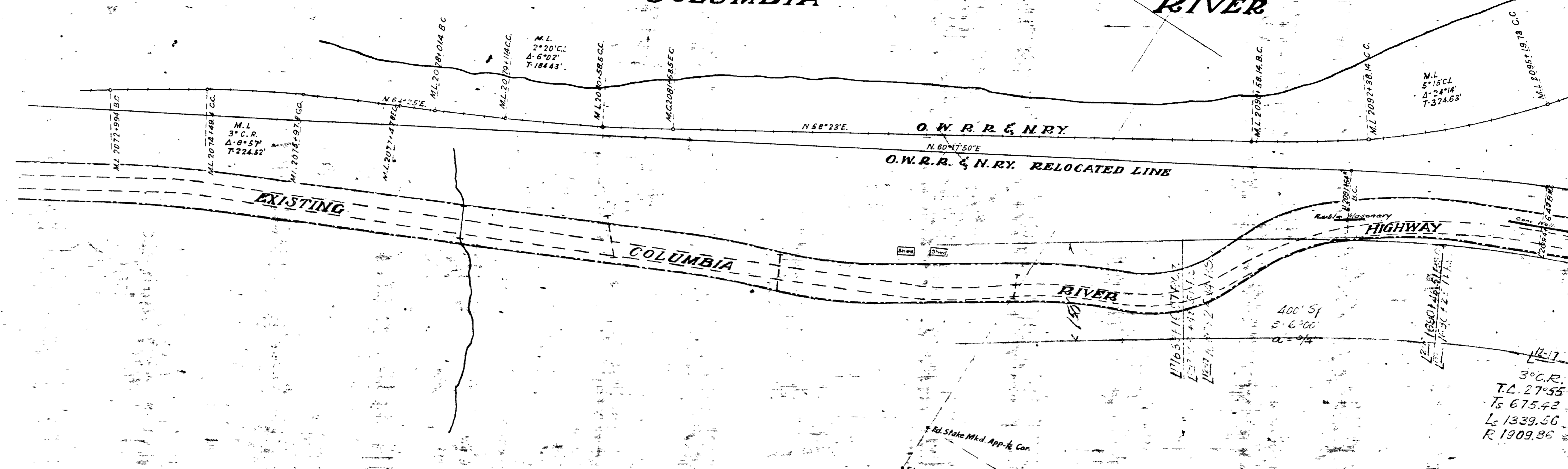


COLUMBIA RIVER



©OREGON DEPARTMENT OF TRANSPORTATION
OREGON STATE HIGHWAY DEPARTMENT

BONNEVILLE - CASCADE LOCKS SECTION

COLUMBIA RIVER HIGHWAY
MULTNOMAH & HOOD RIVER COUNTIES

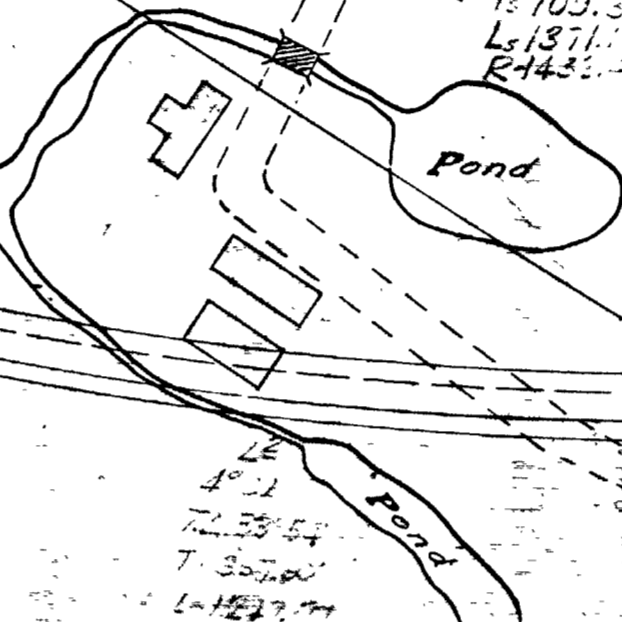
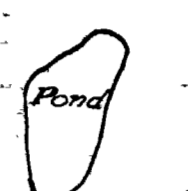
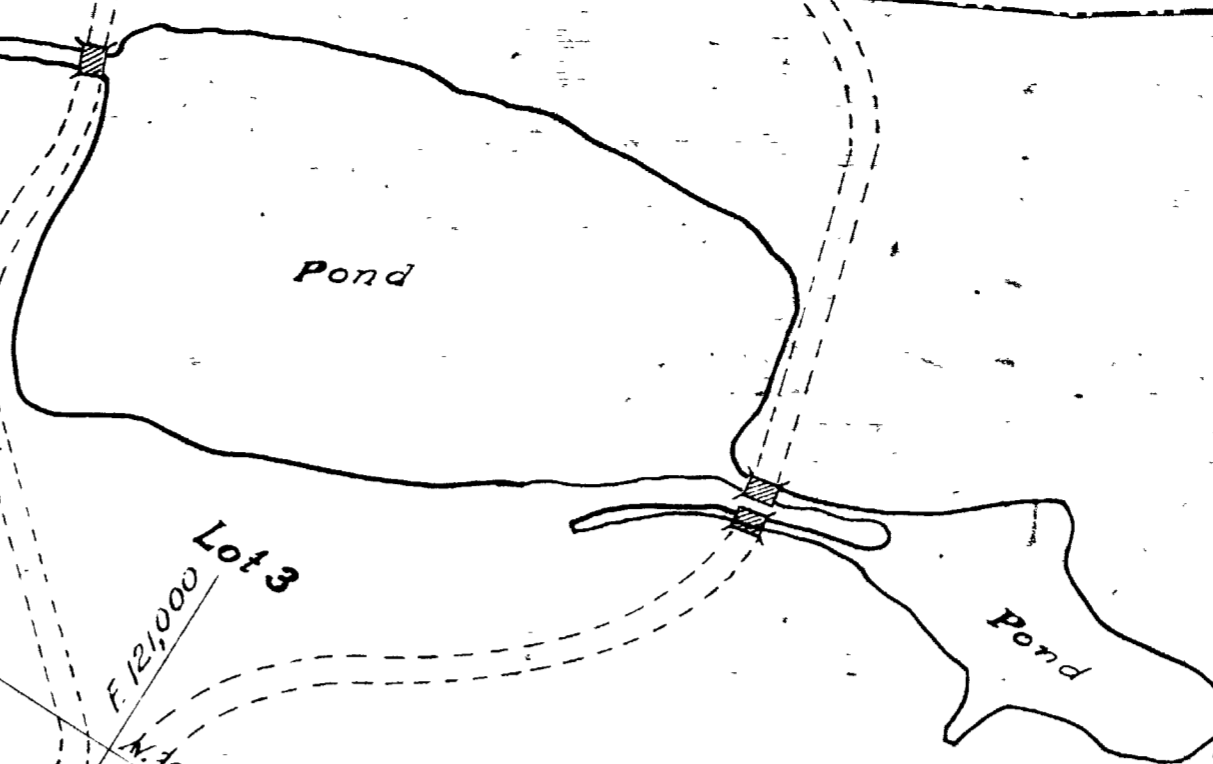
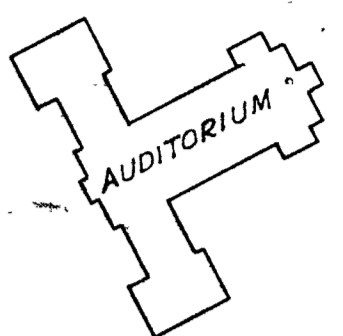
SCALE: 1"=100'
A.A.K. KIRKWOOD, LOG. ENGR. REV. OCT. 1955
Drg. No. 5B-8-21

ACCESS CONTROL LINE

RB-8-21

O.W.R. & N.R.Y.
3° C. R.
T.A. 27° 55'
T.S. 675.42
L.C. 1339.56
R. 1909.86

BONNEVILLE



STATE FISH HATCHERY

Hatchery Building

ROAD

U.S.

TANNER CREEK

O.W.R. & N. CO.

NOYES E. & VIOLET TYRELL

M.L. 5°15'CL
A=24.14
T=324.63

R.R.C.
3° C.R.
T.D. 18°08'
Ls 1339.56
R 1909.86

3° C.R.
T.D. 27°55'
Ls 675.42
R 1339.56

4° C.L.
T.D. 3°00'56"
Ls 1371.33
R 1443.50

R.R.C.
3° C.L.
T.D. 41°48'
S 2250'

2°30' C.R.
T.D. 23°35' 40"
Ls 1717.17 T.D. 102°1.80'
Ls 1743.78'
L-0°51'30"
L-34.33'
R-2291.83'

T.D. 74°51'30"
Ls 1733.66'
L-1954.33'

SEC. 24, T.2N., R.7E., WM.
SEC. 28, T.2N., R.7E., WM.

15607
Deed RW-10620

E 122,000
N 28,000

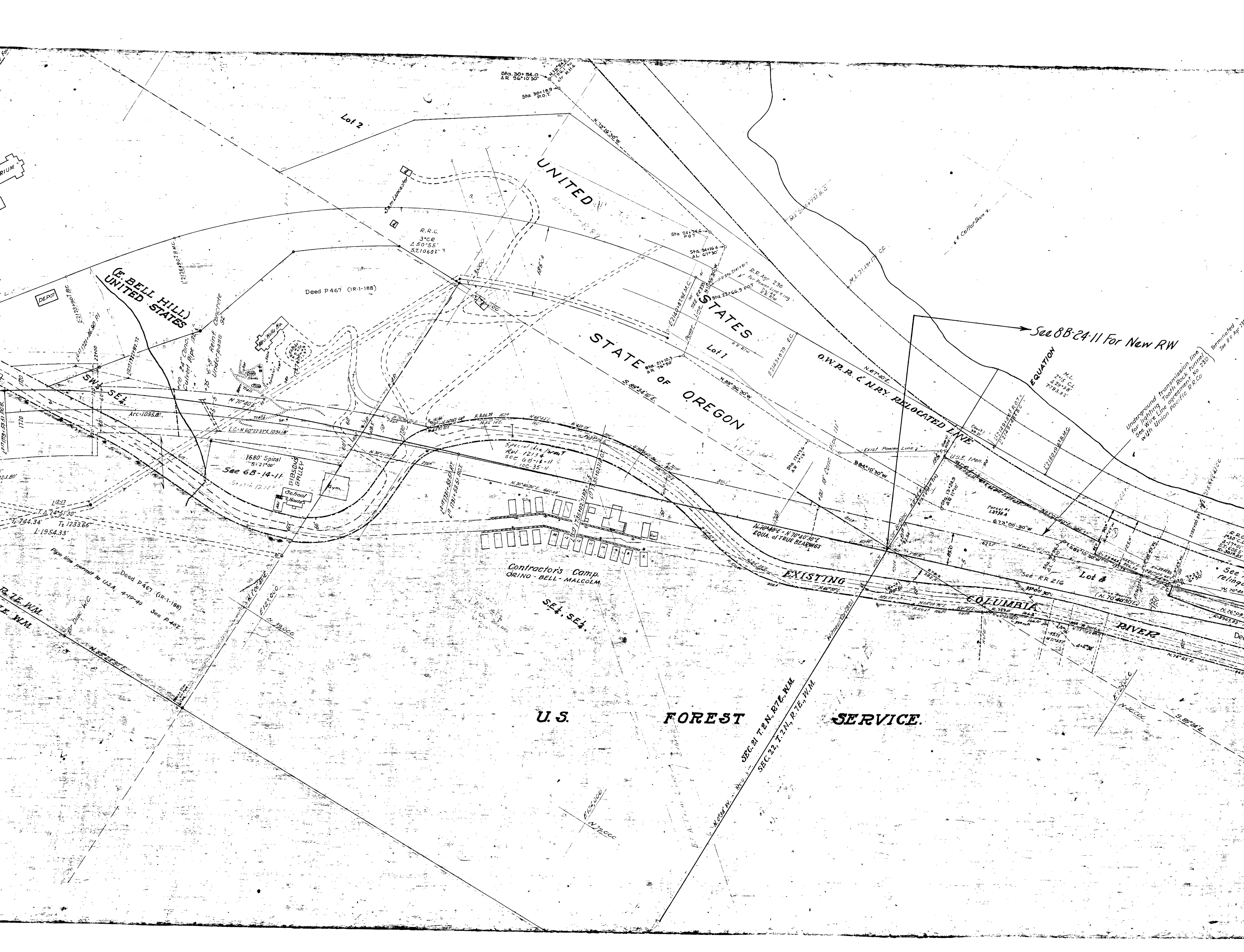
UNIT

SW 1/4

N 28,000

Pipe line parallel to U.S.A. 4'

Dr. Disc. W.C.



UNITED STATES
STATE OF OREGON

U.S. FOREST SERVICE

E. BELL HILL
(UNITED STATES)

Contractor's Camp
ORINO - BELL - MALCOLM

EXISTING
COLUMBIA RIVER

O.W.R. & N.R.Y. RELOCATED LINE

See 8B-24-11 For New RW EQUATION

Underground transmission line
for lighting Tooth Rock Tunnel
See Wire Line agreement No 230
with Union Pacific R.R. Co

Deed P467 (1R-1-188)

1680' Spiral
S 21° 00'

Special Use Permit
RVL 12134-11
See 6B-14-11
100-35-11

Lot 4

SEC. 21 T. 2 N., R. 7 E., W. 1 M.
SEC. 22 T. 2 N., R. 7 E., W. 1 M.

R.R.C.
3° 00'
Δ 50° 55'
S. T. 10601'

Sta. 24164
A.L. 67° 30'

R.R. AGY 230
Power Line Viny
E. R. E.M.

M.L.
215 Ct
4 29' 38"
7-93.3'

Terminated
See R. 7, Apr. 23

See
relimp

De

De

De

De

De

De

De

De

De

De

De

De

De

De

De

De

De

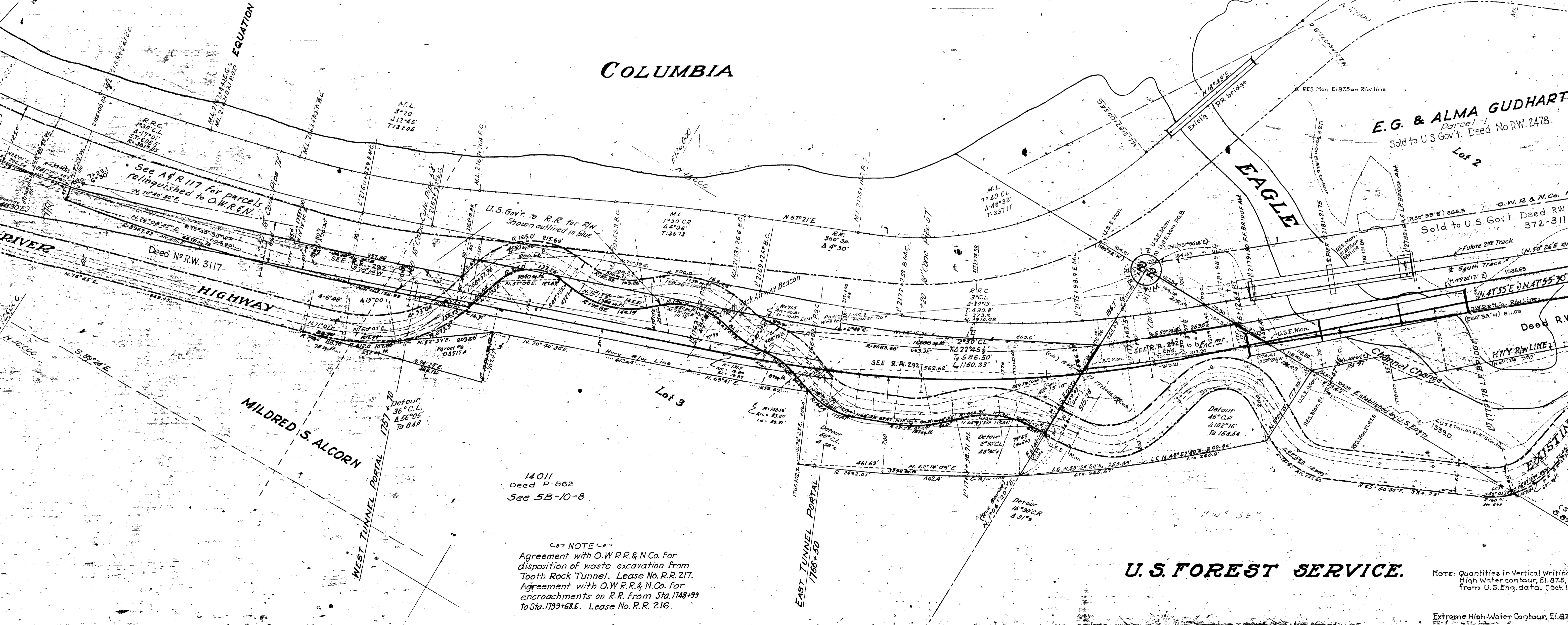
De

De

T.2N. R. 7E., W.M.
5B-8-21

SEE 8B-24-11 FOR NEW RW

New RW
Underground Transmission Lines
for Lighting Tooth Rock Tunnel
See Wire Line Agreement to 230
Terminated
See 7 & 8 Top 750 7-6-1944



14011
Deed P-562
See 5B-10-8

NOTE
Agreement with O.W.R.R. & N.Co. For
disposition of waste excavation from
Tooth Rock Tunnel. Lease No. R.R. 217.
Agreement with O.W.R.R. & N.Co. For
encroachments on R.R. from Sta. 1748+99
to Sta. 1799+68.6. Lease No. R.R. 216.

U.S. FOREST SERVICE.

Note: Quantities in Vertical Writing
High Water contour, El. 875,
from U.S. Eng. data. (Oct. 1
Extreme High Water Contour, El. 87

RIVER

EQUATION

See 8B-24-11 For New RW

& ALMA GUDHART
Parcel-1
to U.S. Gov't. Deed No. RW. 2478.

Lot 2
O.W.R. & N.Co. R/W Line 7
Sold to U.S. Gov't. Deed RW 2478
372-311

Deed R.W. 2478
Channel Change
Channel Change

Parcel-2
Sold to U.S. Gov't.
Deed No. RW 2478.

BLUE LAKE

O.W.R. & N.CO. RELOCATED LINE

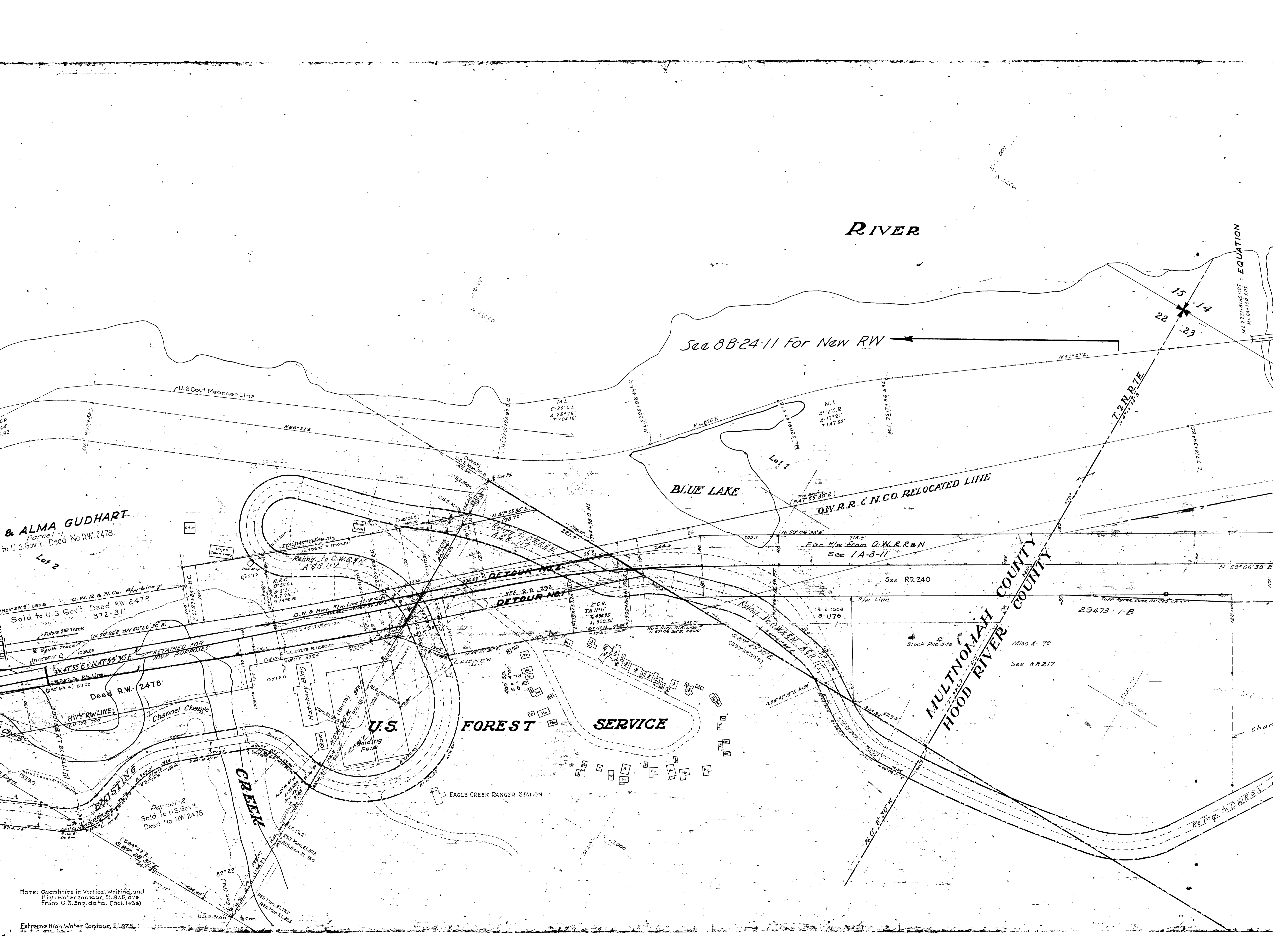
U.S. FOREST SERVICE

MULTNOMAH COUNTY
HOOD RIVER COUNTY

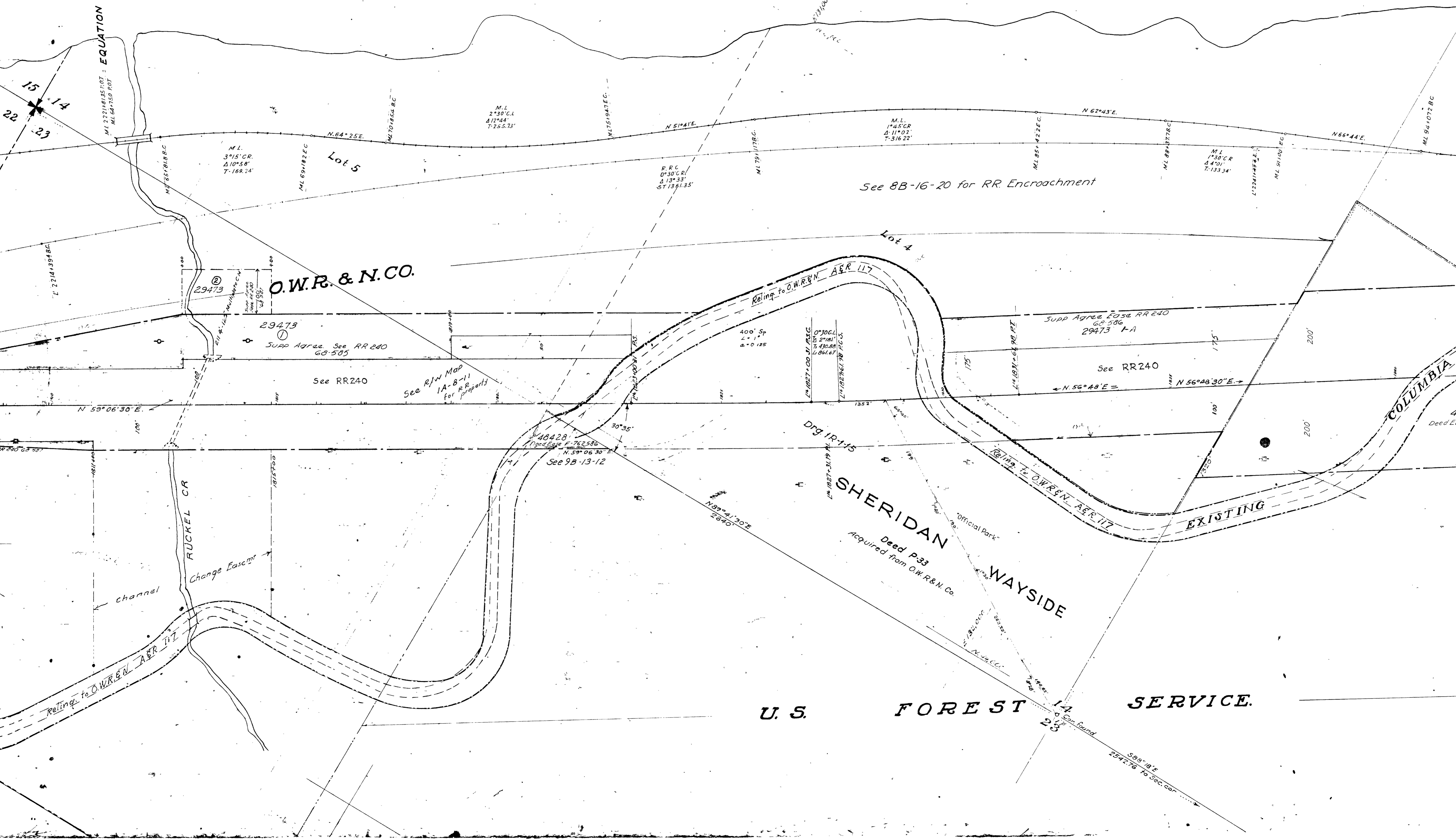
EAGLE CREEK RANGER STATION

Note: Quantities in Vertical Writing, and High Water contour, El. 87.5, are from U.S. Eng. data. (Oct. 1936)

Extreme High Water Contour, El. 87.5



T2N. R7E, WM.
5B-8-21



O.W.R. & N.CO.

SHERIDAN WAYSIDE
Deed P33
Acquired from O.W.R. & N. Co.

U.S. FOREST SERVICE.

See 8B-16-20 for RR Encroachment

Supp Agrag. Eas. RR 240
68-586
29473 -A

See RR240

40428
Used Edge F-762586
See 9B-13-12

See R/W Map
1A-8-11
for R.R. property

29473
Supp Agrag. See RR 240
68-585

M.L.
3°15' CR
Δ10°58'
T-169.24'

R.R.C.
0°30' CR
Δ13°33'
ST-1381.35'

M.L.
1°45' CR
Δ11°02'
T-316.22'

M.L.
1°30' CR
Δ4°01'
T-133.34'

M.L.
2°30' C.L.
Δ12°44'
T-255.73'

Lot 5

Lot 4

EQUATION

COLUMBIA

RUCKEL CR

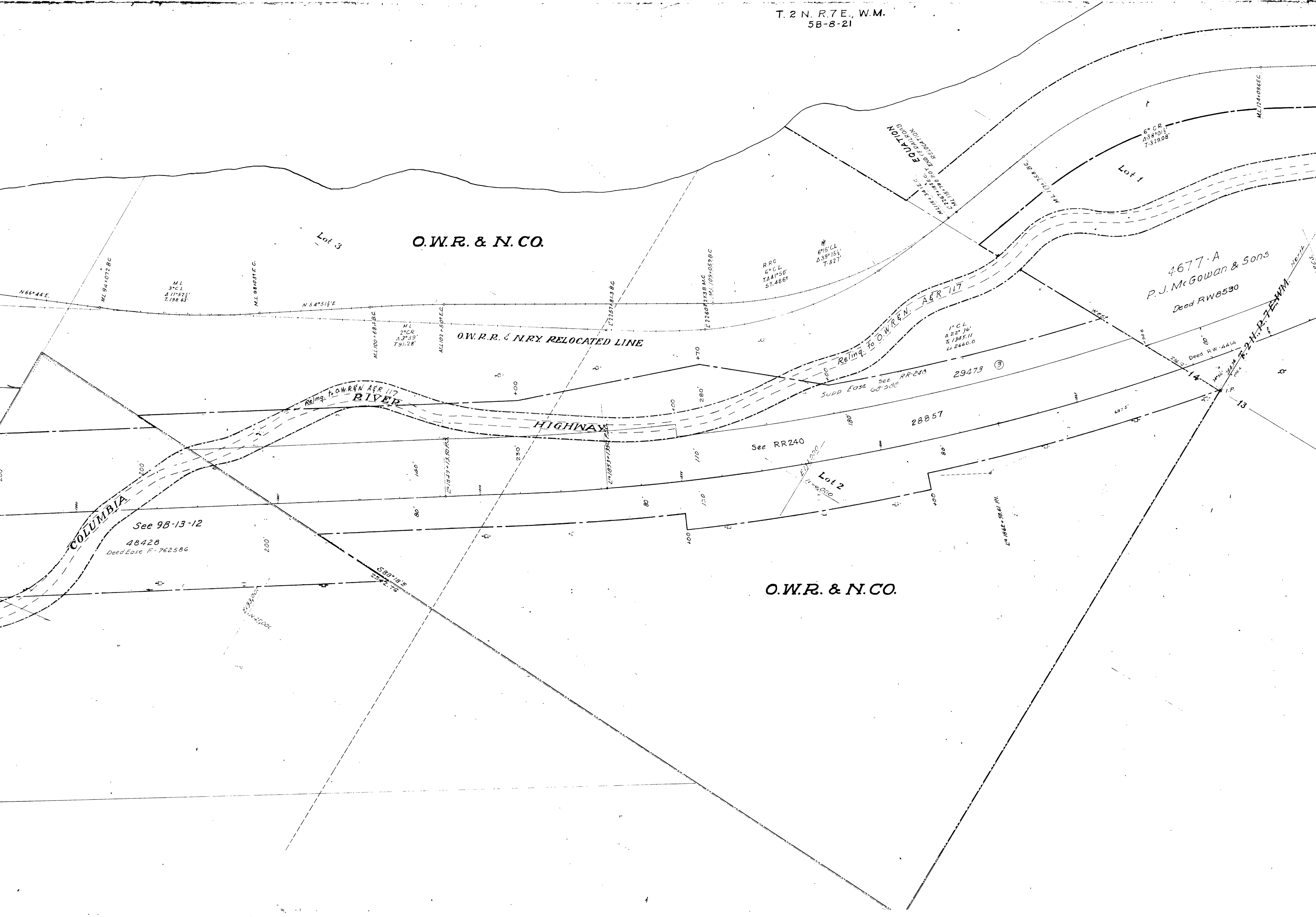
Change Easement

EXISTING

15 14
22 23

14
25

S88°18'E
2542.76 to Sec. cor



77-A
Gowan & Sons
RW 8530

U.S. Forest Service
See 8B-7-6

SOUTH LINE J. CHIPMAN D.L.C.

BRIDGE OF THE GODS

Deed RW-4414

13

Lot 1

O.W.R.R. & N. Co. R/W Way Lines
1°45' CL
Δ 8°23'
T-230.38'

O.W.R.R. & N. Co
See 1A-8-11

3° CL
Δ 27°17'30"
T-664.47'
L-1309.72'

SUPP Agree Edg
see RR 240
60°50'3"

29473

Final Judgmt. RW 1838A
25874
Hathaway
29473

SEE 8B-7-6

J.B. Label

SOUTH LINE JOHN CHIPMAN D.L.C.

50°01'30"E
460'

2°15' C.R.
Δ 18°49'
T-223.40'

2° C.R.
Δ 27°54'05"
L-1493.15'

Deed RW-726

See RR-240

See R/W

M.L. 124,0866C.

M.L. 127,177B.C.

1/2 1893-1891 R/W

1/2 1875-1873 R/W

1/2 1873-1871 R/W

3°45' CL
Δ 10°08'
T-155.47'

Deed RW-117

M.L. 127,177B.C.

M.L. 127,177B.C.

5°27'30" CL
Δ 30°00'
T-185.912'

Deed RW-117

See RR-240

See R/W

M.L. 1850-1848 R/W

M.L. 1885-1881 R/W

54°13'18"E
508.52'

M.L. 127,177B.C.

M.L. 127,177B.C.

M.L. 127,177B.C.

T.2N. R.7E. W.M.
5B-8-21

DEPOT

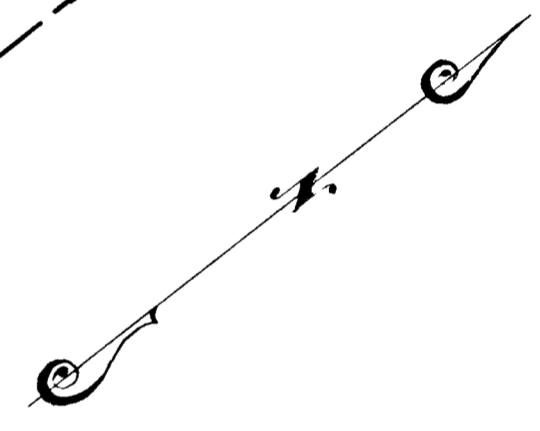


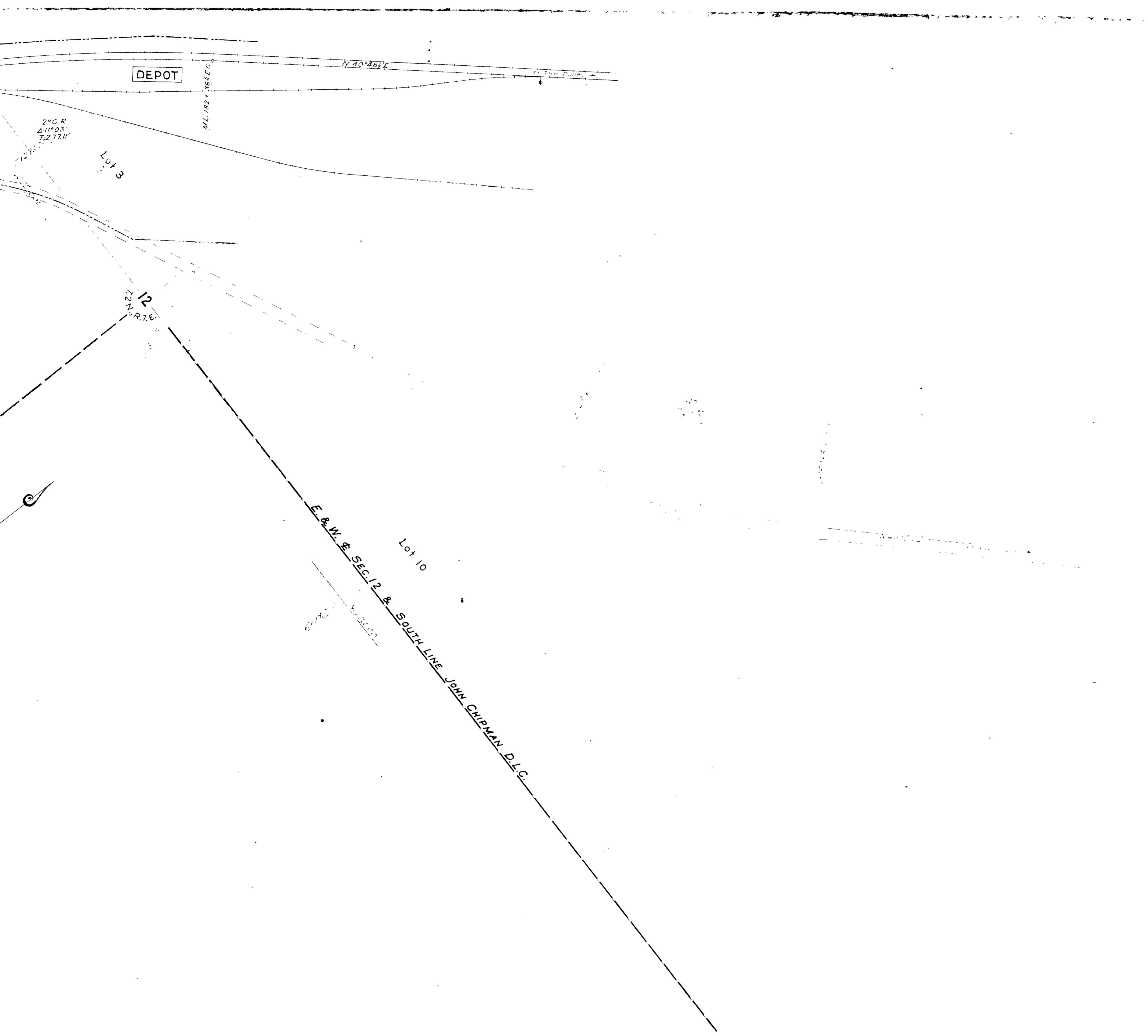
See R/W Map 3B-24-17 →

J.B. Laber

SEC. 12, T.2N. R.7E. W.M.
SEC. 13

N. & S. & SEC. 12 & EAST LINE JOHN CHIPMAN D.L.C.





BONNEVILLE - CASCADE LOCKS SECTION
Drg. No. 5B-8-21