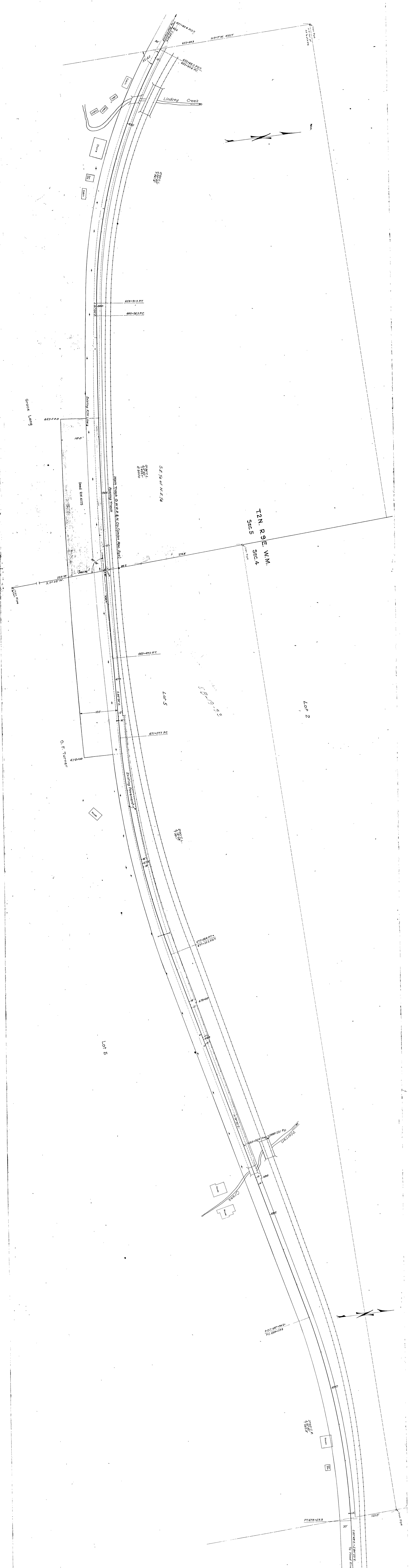


OREGON STATE HIGHWAY DEPARTMENT
 COLUMBIA RIVER HIGHWAY
 WARREN CREEK SECTION
 HOOD RIVER COUNTY
 March, 1951
 Scale 1" = 200'
 S.B. 7-21



WARREN CREEK SECTION
 COLUMBIA RIVER HIGHWAY
 D-9 No. S.B. 7-21