

OBSOLETE

SEE DRG. NO. 7B-30-1

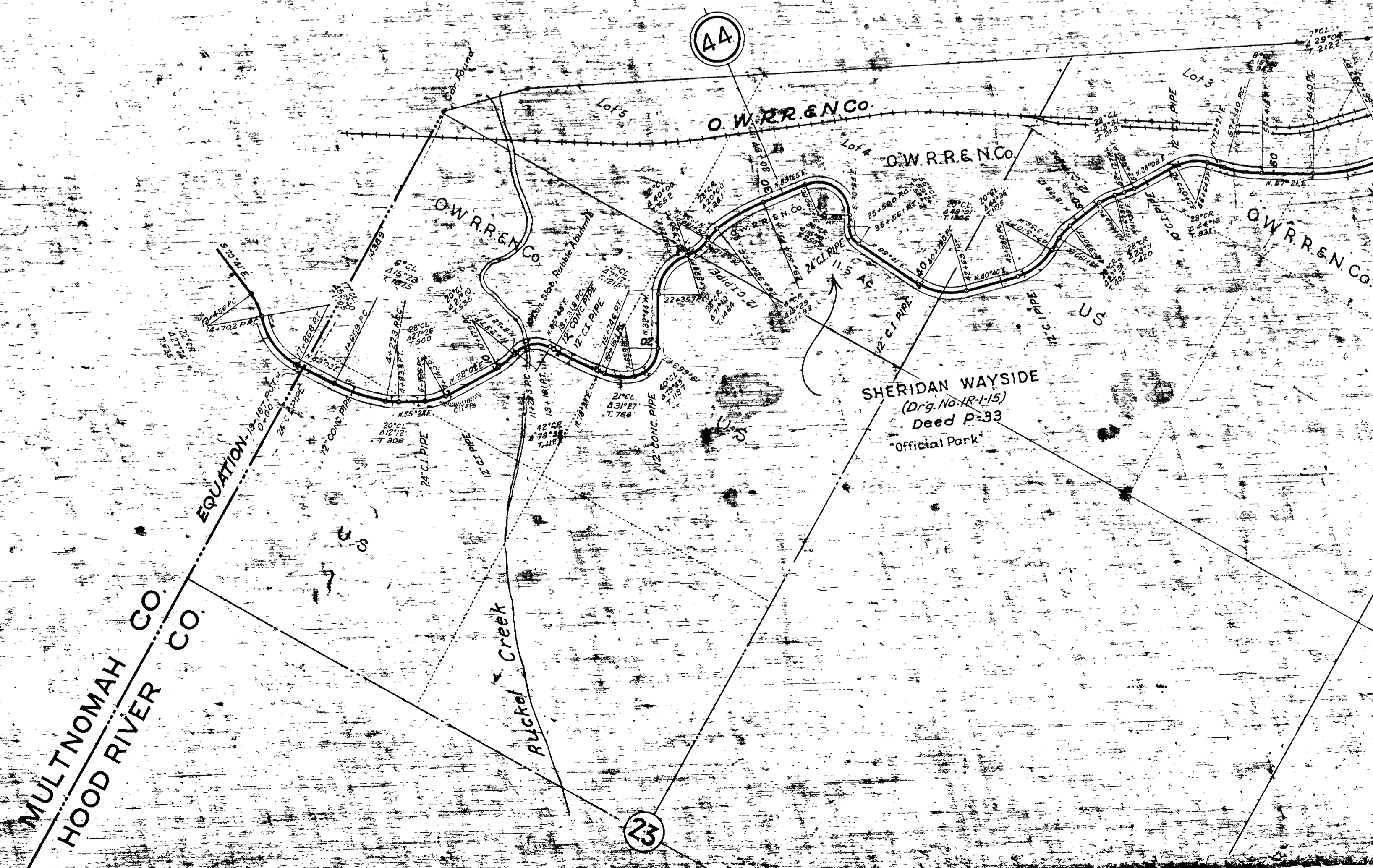
COLUMBIA

OREGON STATE HIGHWAY DEPARTMENT
COLUMBIA RIVER HIGHWAY
CONSTRUCTED LINE
MULTNOMAH CO. LINE TO HOOD RIVER
HOOD RIVER COUNTY

Scale 1 in = 400 ft May 1922

DRG. No. 3B14-8
OREGON STATE HIGHWAY DEPARTMENT

SUPERSEDED BY DRG. 7B-30-1



RIVER

Rapids

Cascade Locks

CASCADE LOCKS

John Chipman D.L.C.

John Chipman D.L.C.
Wind River Lumber Co.

R. C. Atwell D.L.C.

T.2N.R.7E.
T.2N.R.8E.

(45)

(46)

(7)

(13)

R.R. Encroachments in Cascade Locks
Agreement Dated Aug 17, 1914
R.R. 3 & 4
File

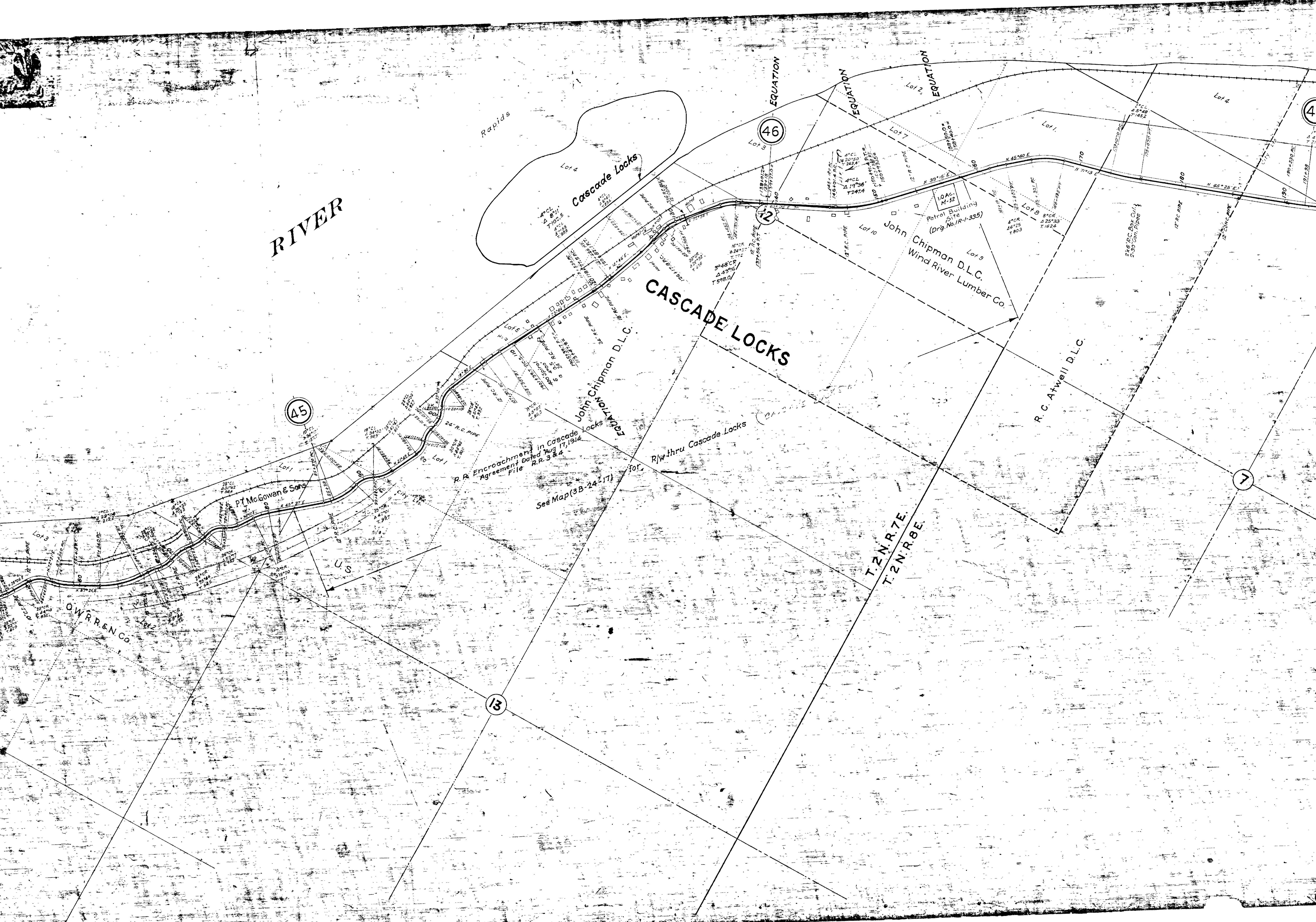
See Map (SB-24-17)

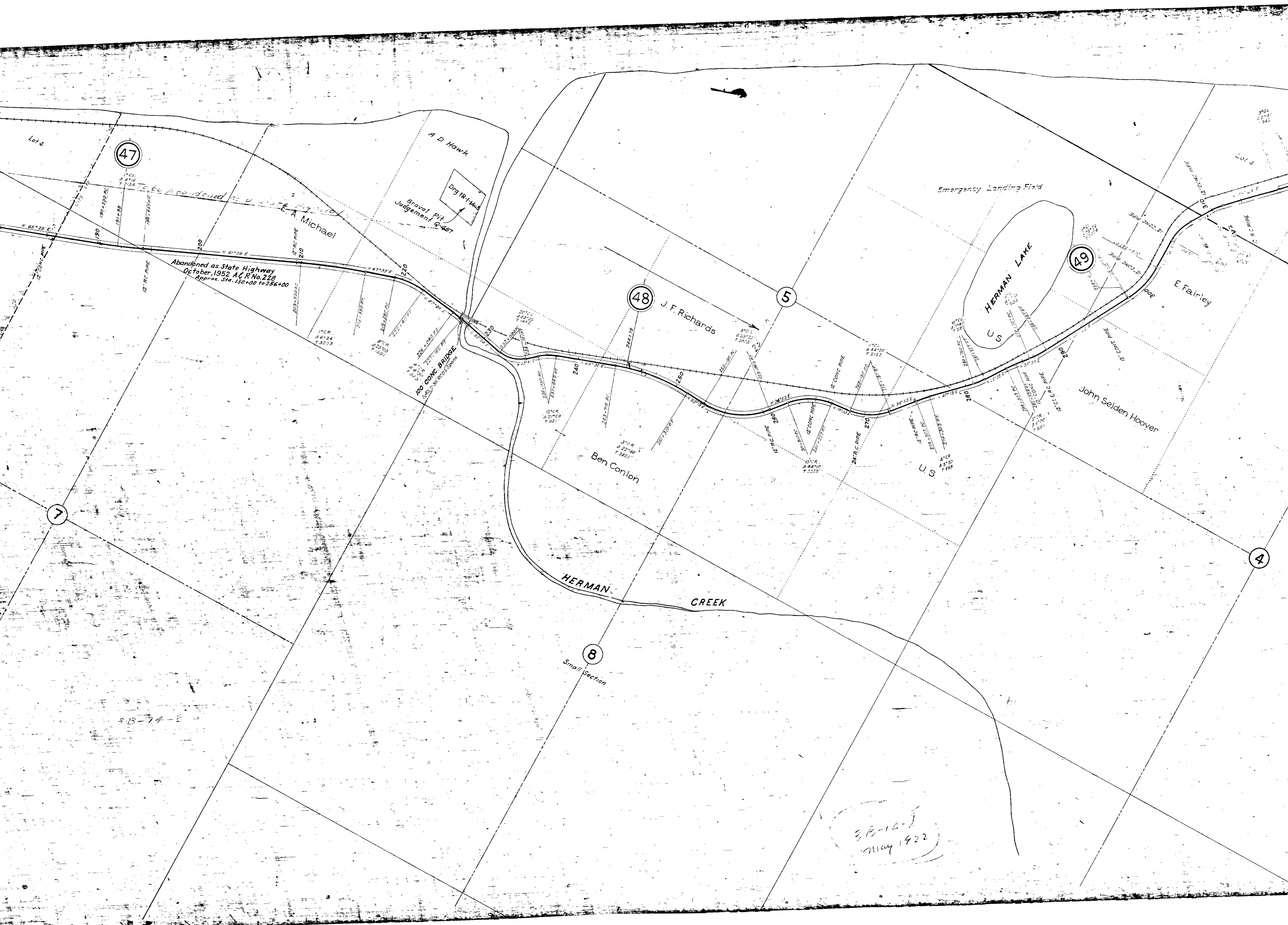
O.W. R. & N. Co.

Pt. McGowan & Sons

10 Ac. M-32
Petrol Building
(Orig. No. R-1-335)

2 1/2 Ac. Box Cully
200' Conn. Pipe





Abandoned as State Highway
October, 1952 A&R No. 228
Approx. Sta. 130+00 to 236+00

100 CONCRETE BRIDGE
100' x 30' x 5' 6\"/>

Emergency Landing Field

HERMAN LAKE

HERMAN CREEK

Small Section

3B-14-1
May 1922

47

48

5

49

7

4

8

Lot 4

Lot 4

A D Hawk

A Michael

J. F. Richards

Ben Conlon

U S

U S

John Selden Hoover

E Fairley

To be appended to...

Gravel Pit
Judgement Q-457

Drg IR-144

N 65° 25' E

N 81° 09' E

N 87° 03' E

N 87° 03' E

N 87° 03' E

N 87° 03' E

N 87° 03' E

N 87° 03' E

N 87° 03' E

N 87° 03' E

N 87° 03' E

N 87° 03' E

N 87° 03' E

N 87° 03' E

N 87° 03' E

N 87° 03' E

N 87° 03' E

N 87° 03' E

N 87° 03' E

N 87° 03' E

N 87° 03' E

N 87° 03' E

N 87° 03' E

N 87° 03' E

N 87° 03' E

N 87° 03' E

N 87° 03' E

12\"/>

12\"/>

12\"/>

12\"/>

12\"/>

12\"/>

12\"/>

12\"/>

12\"/>

12\"/>

12\"/>

12\"/>

12\"/>

12\"/>

12\"/>

12\"/>

12\"/>

12\"/>

12\"/>

12\"/>

12\"/>

12\"/>

12\"/>

12\"/>

12\"/>

12\"/>

12\"/>

12\"/>

12\"/>

12\"/>

12\"/>

12\"/>

12\"/>

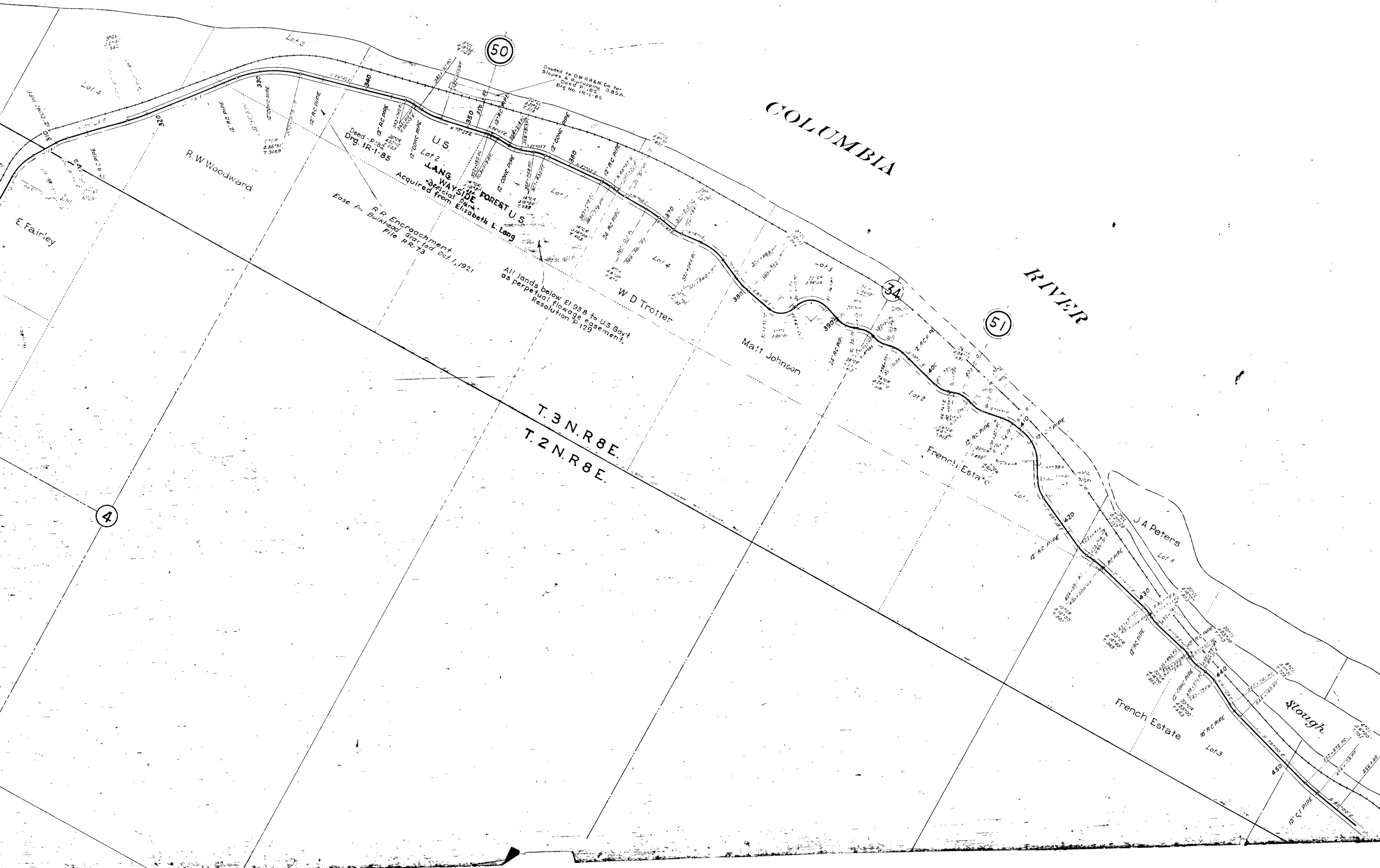
12\"/>

12\"/>

12\"/>

12\"/>

12\"/>



COLUMBIA RIVER

50

34

51

4

R.W. Woodward

E. Fairley

US
LANG
WAYSIDE FOREST US
Acquired from Elizabeth L. Lang

W.D. Trotter

Matt Johnson

French Estate

J.A. Peters

French Estate

Slough

T.3N.R.8E.
T.2N.R.8E.

R.P. Encroachment
Granted Oct. 1, 1921
Ease for Bulkhead
File R.R. 73

All lands below El 93.8 to US Govt
as perpetual flowage easement.
Resolution 7-129

Deeded to OWR & N Co for
Slopes & way openings O.B.S.A.
Deed P. 82
Drg No. 1R-1-85

Lot 4
Lot 3
Lot 2
Lot 1

12\"/>

12\"/>

T. 3 N. R. 8 E.
T. 2 N. R. 8 E.

52

WYETH
53

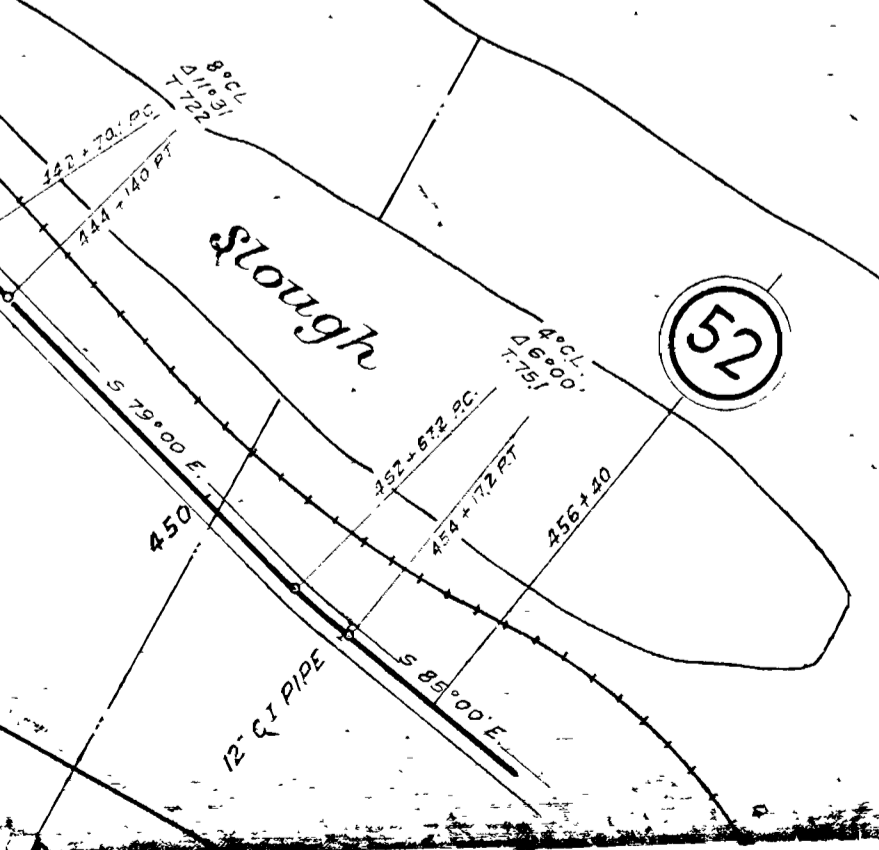
E L Thomas

US
10 Acres

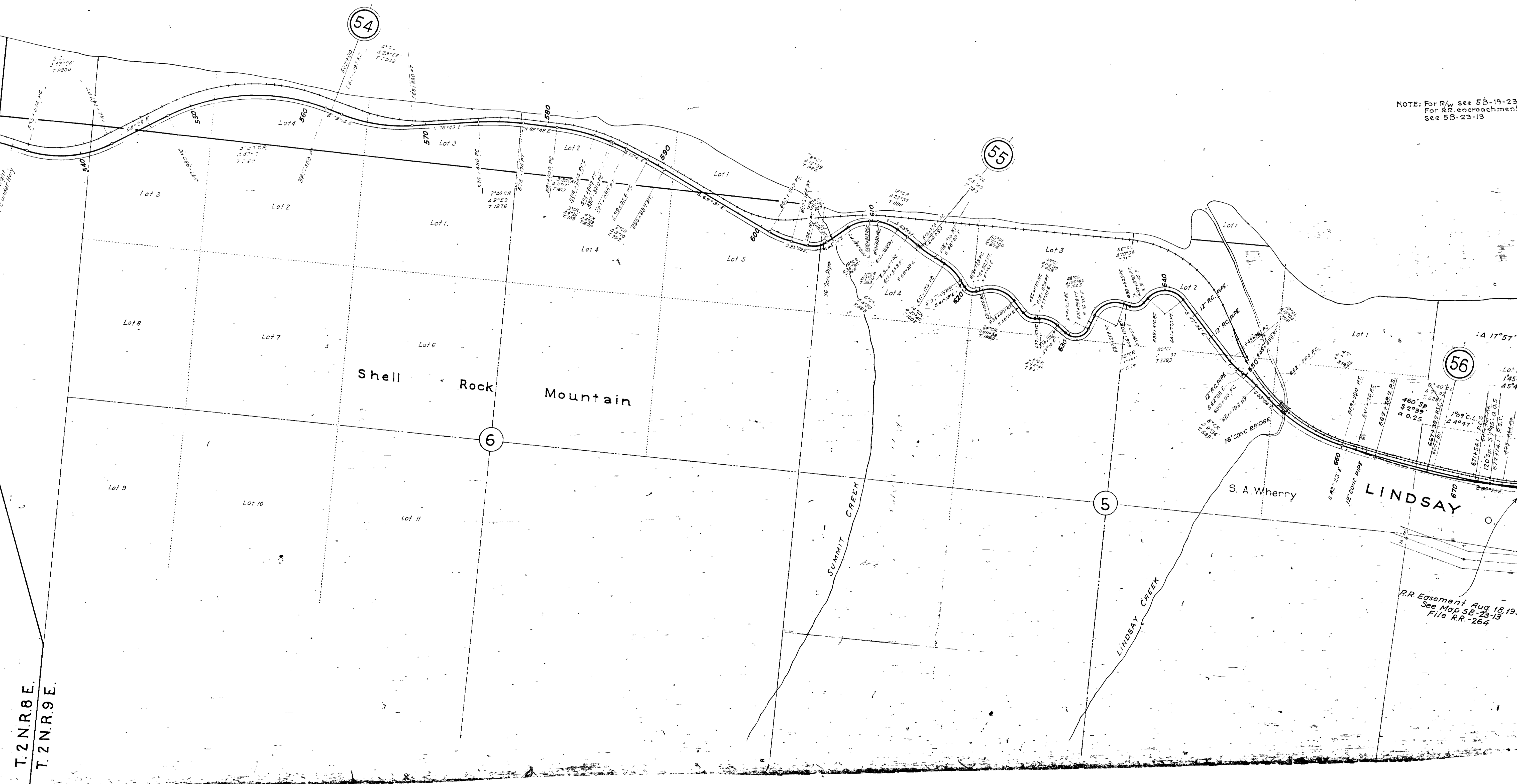
GORTON CREEK

HARPHAN CREEK

T. 2 N. R. 8 E.
T. 2 N. R. 9 E.



NOTE: For R/W see 53-19-23
For RR encroachment
see 5B-23-13



54

55

56

Shell Rock Mountain

LINDSAY

S. A. Wherry

SUMMIT CREEK

LINDSAY CREEK

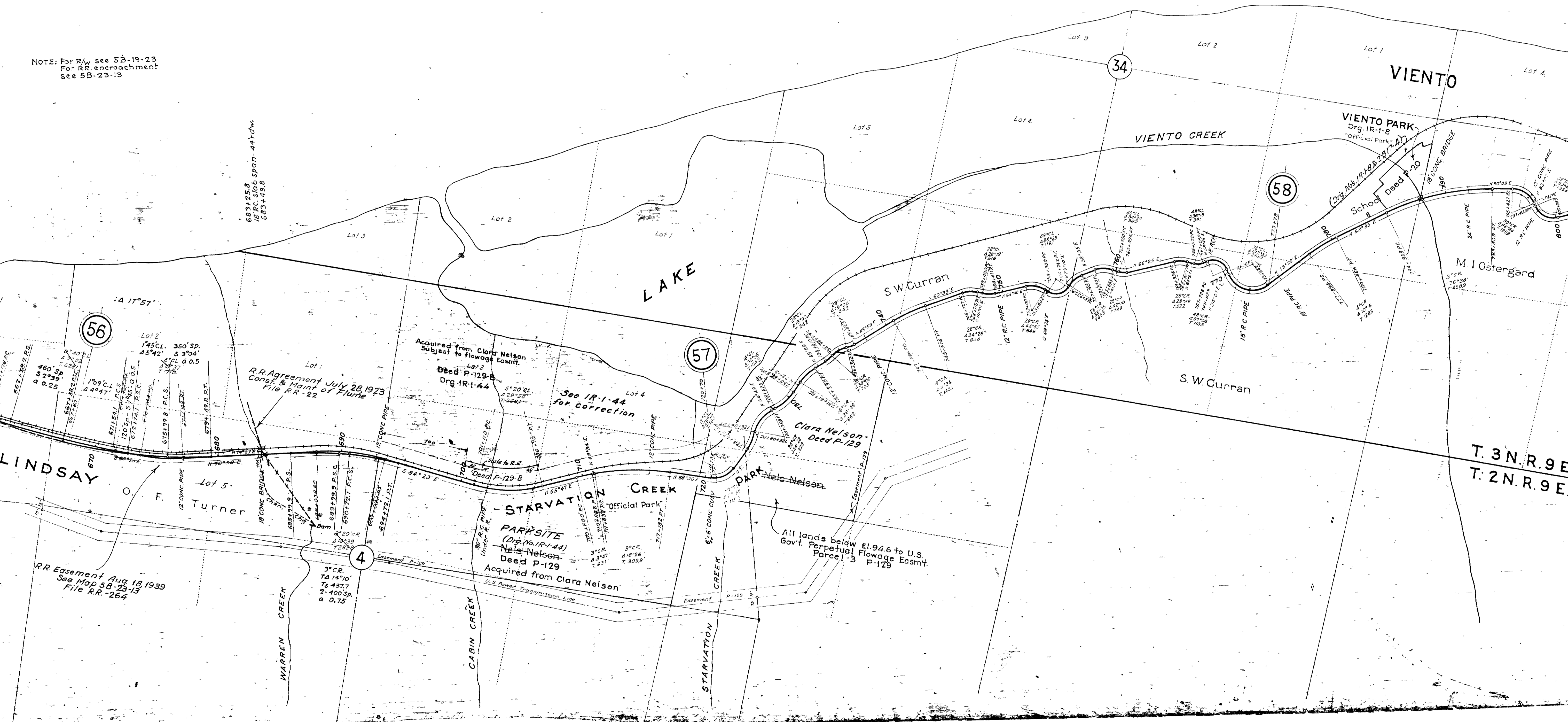
R.R. Easement Aug. 18, 1919.
See Map 53-23-13
File R.R.-264

T. 2 N. R. 8 E.
T. 2 N. R. 9 E.

SUPERSEDED BY DRG. 7B-30-1

NOTE: For R/W see 5B-19-23
For RR encroachment
see 5B-29-13

683125.8
18" RC 8066 span-44'rcw.
683143.8



T. 3 N. R. 9 E
T. 2 N. R. 9 E

ENTO

59

60

61

SONNY

All lands below El. 95.0 in Lots 1, 2, 3 and 4, Sec 36, to US Govt as perpetual flowage easement. Resolution P-129

M. I. Ostergard

Laura Nelson

Thos W. Wygant
Acquired from Simeon R. Winch

Thos W. Wygant

J. M. Culbertson

T. 3 N. R. 9 E.
T. 2 N. R. 9 E.

Mt Hood NATIONAL FOREST

WYGANT

PARK

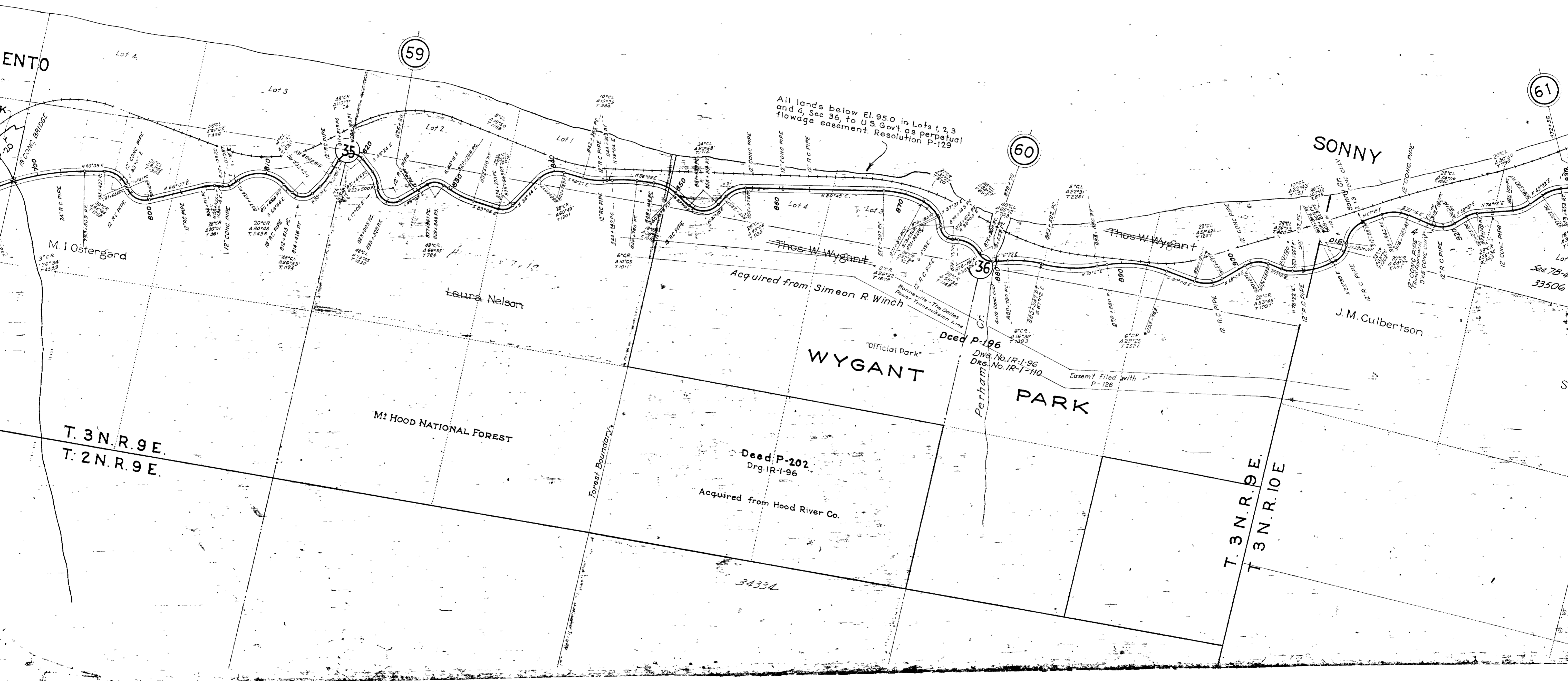
T. 3 N. R. 9 E.
T. 3 N. R. 10 E.

Deed P-202
Drg. IR-1-96
Acquired from Hood River Co.

Deed P-126
Dwg. No. IR-1-96
Drg. No. IR-1-110

Easemt. filed with P-126

3433A



MITCHELL POINT

400' Tunnel

61

62

63

Pearl Morton

O. W. R. & N. Co.

Wind River Lumber Co.

RUTHTON

P. A. Reed

C. E. Coppie

31

32

33

See 7B-4-9
33506

See 7B-4-9
42157

Talus Pit
12.93 AC.
See IR 5-149
Deed G-1365
Edgar Locke
Meridith Golligan

Seneca Fouts
Deed P-459

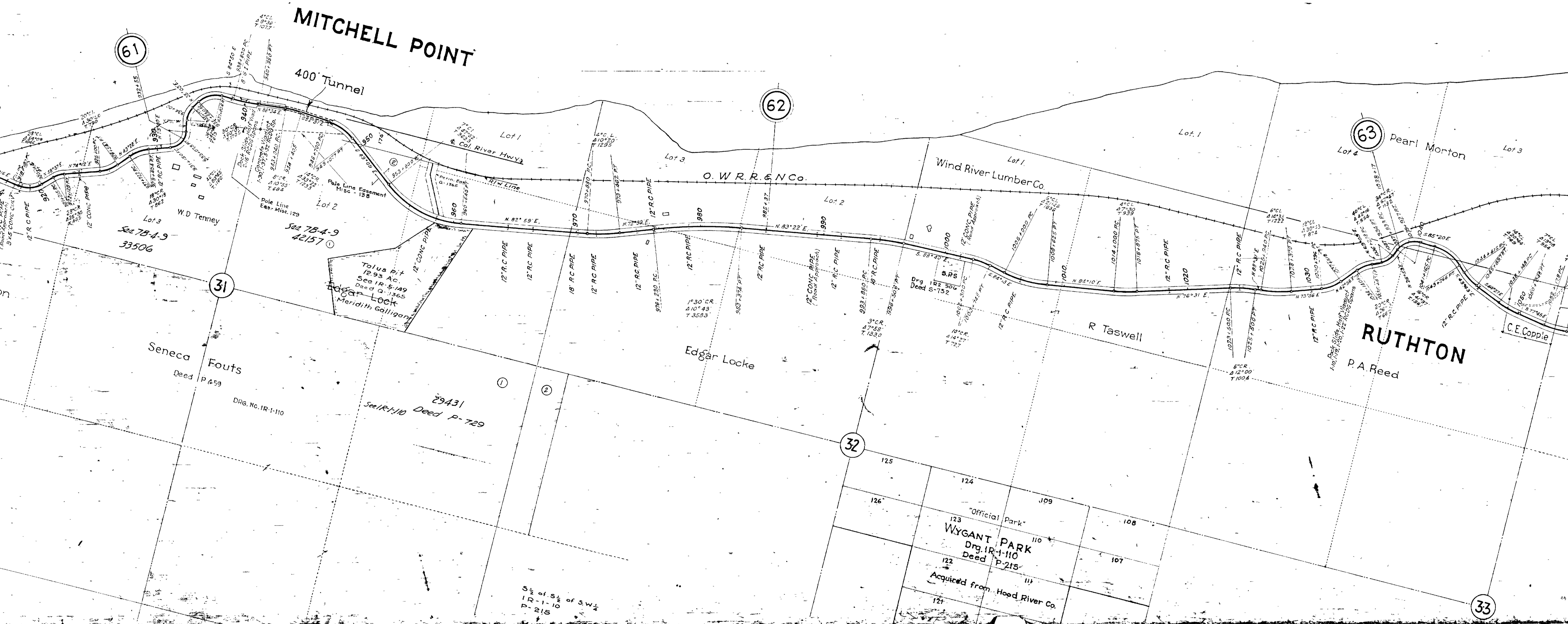
DRG. NO. IR-1-110

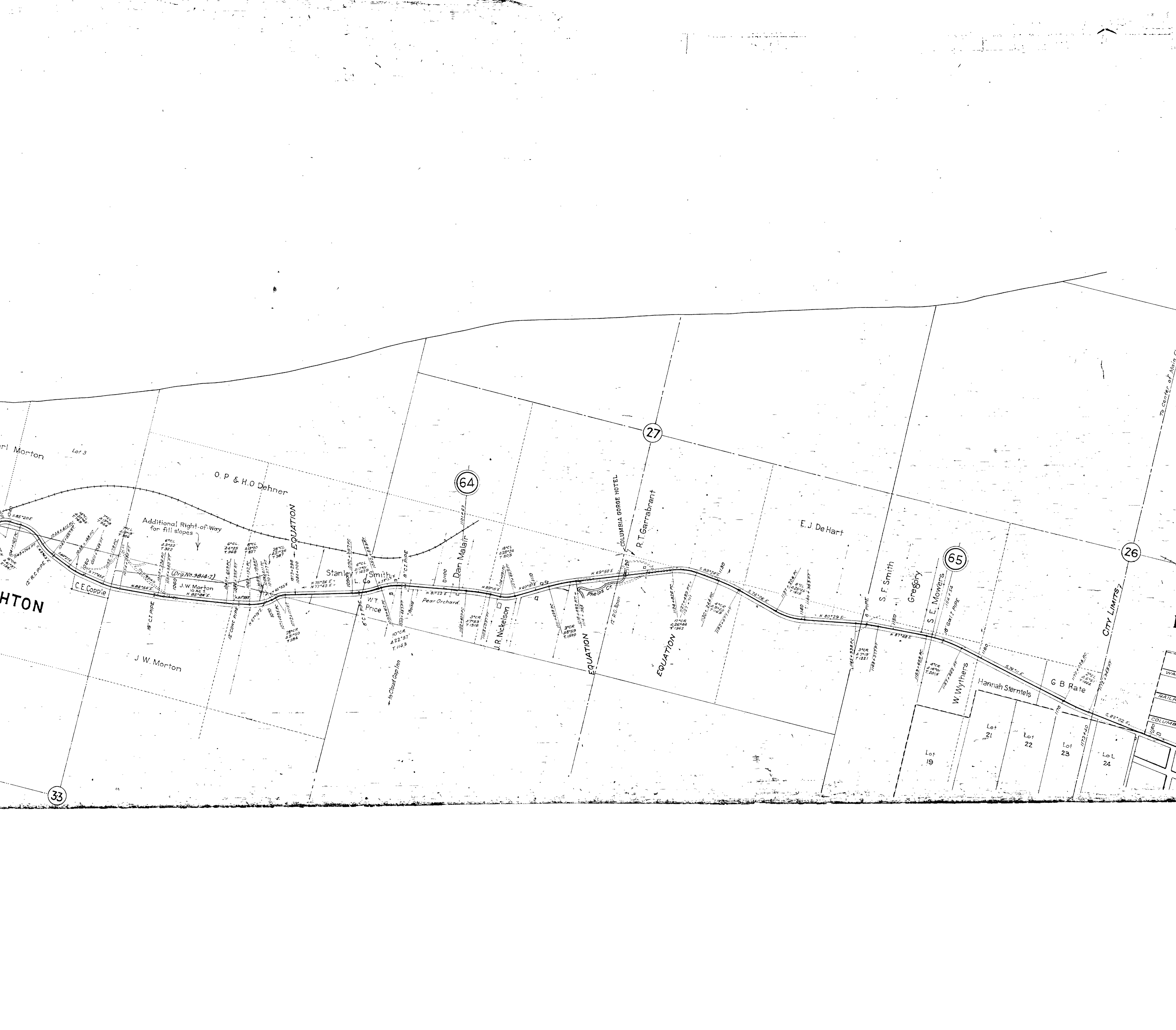
29431
See IR-1-110
Deed P-729

S 1/2 of S 1/2 of SW 1/4
IR-1-10
P-215

Official Park
WYGANT PARK
DRG. IR-1-110
Deed P-215

Acquired from Hood River Co.





arl Morton

Lot 3

O. P. & H. O. Dehner

64

Additional Right-of-Way for fill slopes

(Ord. No. 3914-7)

HTON

C. E. Copple

J. W. Morton

Stanley L. Smith

WT Price

Pear Orchard

Danco

Dan Malair

J. R. Nickelson

Phelps Cr.

EQUATION

EQUATION

COLUMBIA GORGE HOTEL

R. T. Garrabrant

E. J. De Hart

S. F. Smith

Gregory

65

S. E. Mowers

W. Wythers

Hannah Sternfels

G. B. Rate

Lot 19

Lot 21

Lot 22

Lot 23

Lot 24

CITY LIMITS

To center of Main Cr

33

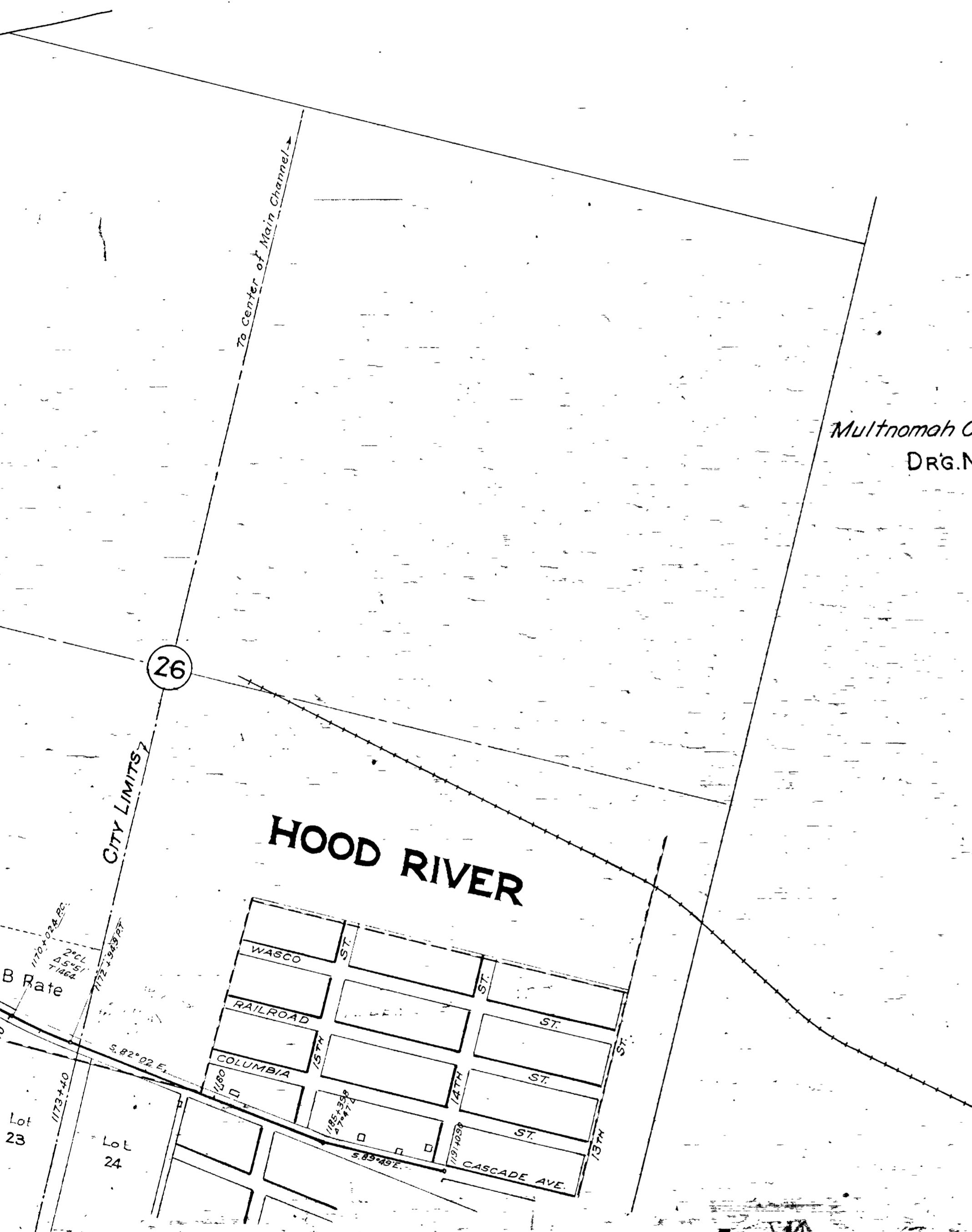
26

OBSOLETE

SEE DRG. NO. 7B-30-1

Multnomah Co. Line to Hood River
DRG. NO. 3B14-8

SUPERSEDED BY DRG. 7B-30-1



Multnomah Co. Line to Hood River
DRG. NO. 3B14-8
SUPERSEDED BY DRG. 7B-30-1