

MAP

COLUMBIA RIVER HIGHWAY

Showing
Farm of J.W. Morton with proposed Right of Way
to cover slope of road as constructed
Scale 1 inch = 100 ft True Bearings

Surveyed Febr 24 1920

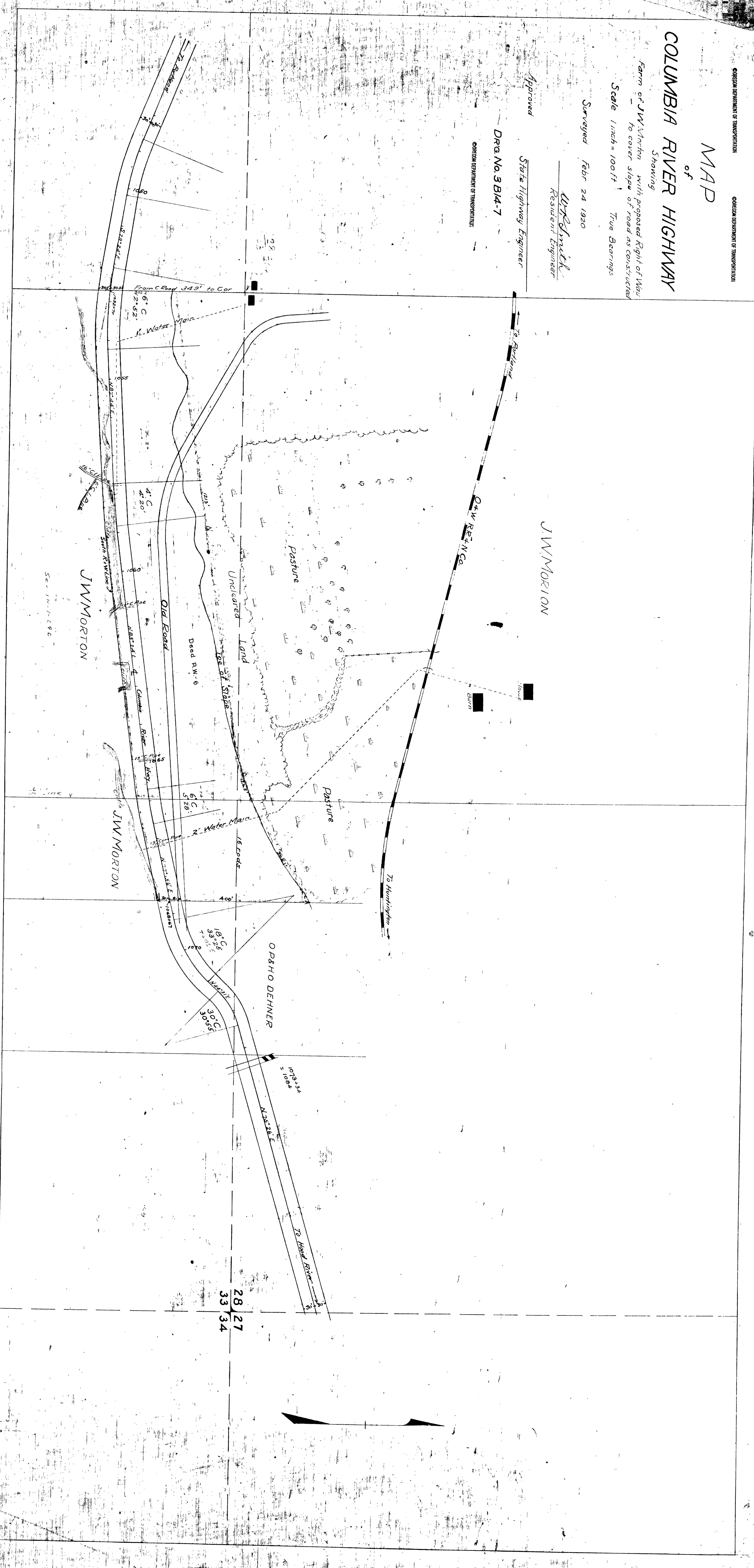
W.D. Smith
Resident Engineer

Approved

State Highway Engineer

DRG. No. 3 B14-7

OREGON DEPARTMENT OF TRANSPORTATION



28 27
33 34

