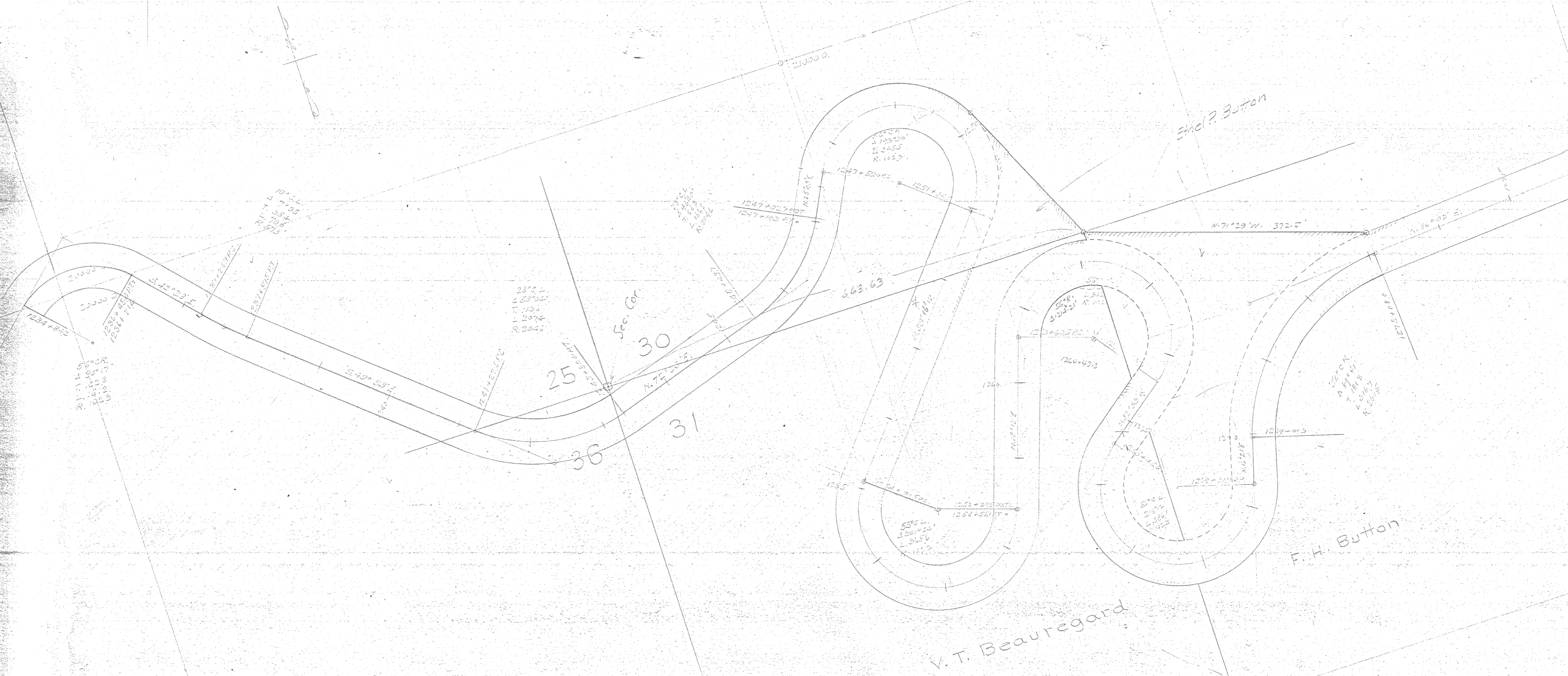


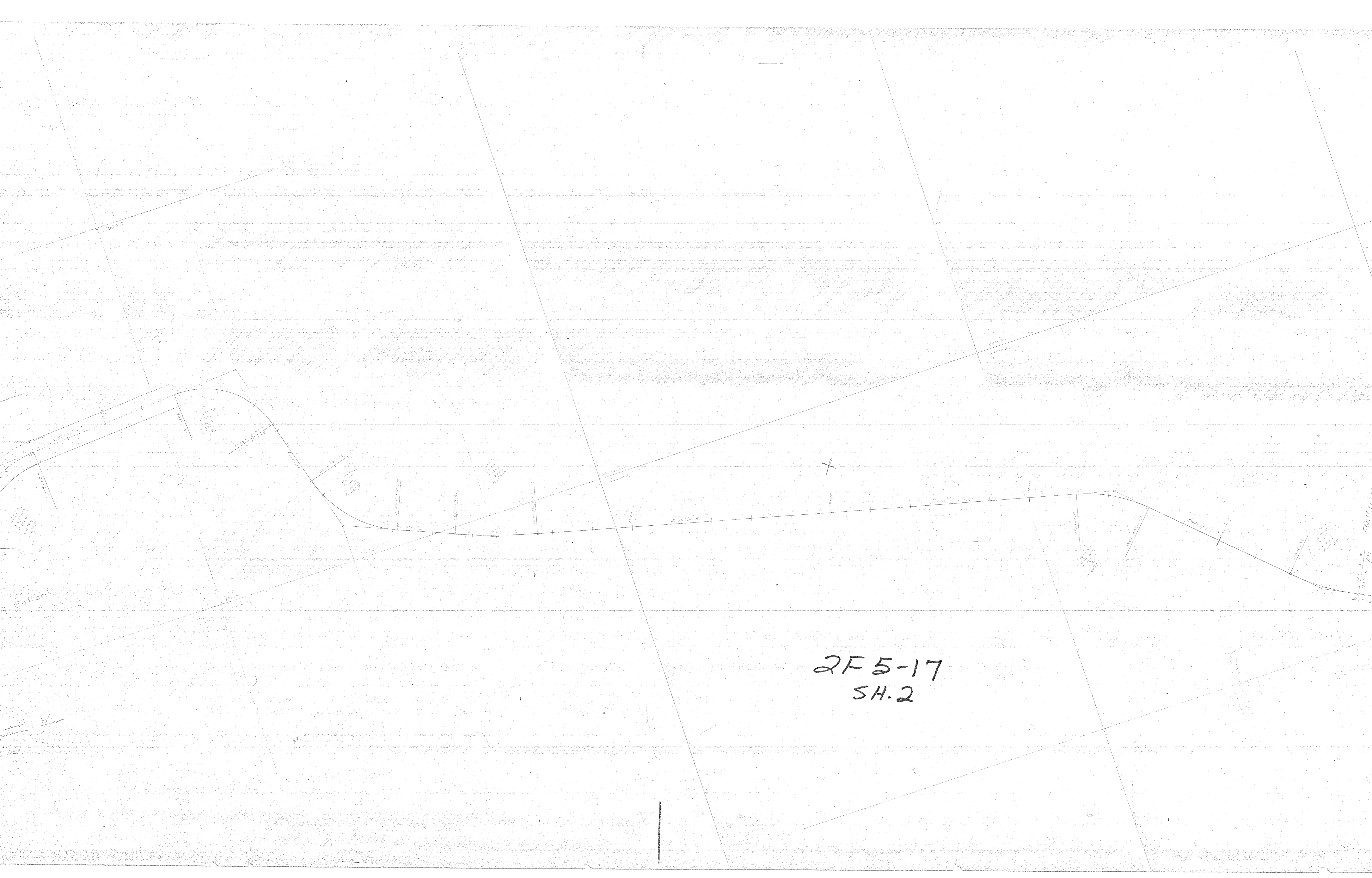
HOOD RIVER

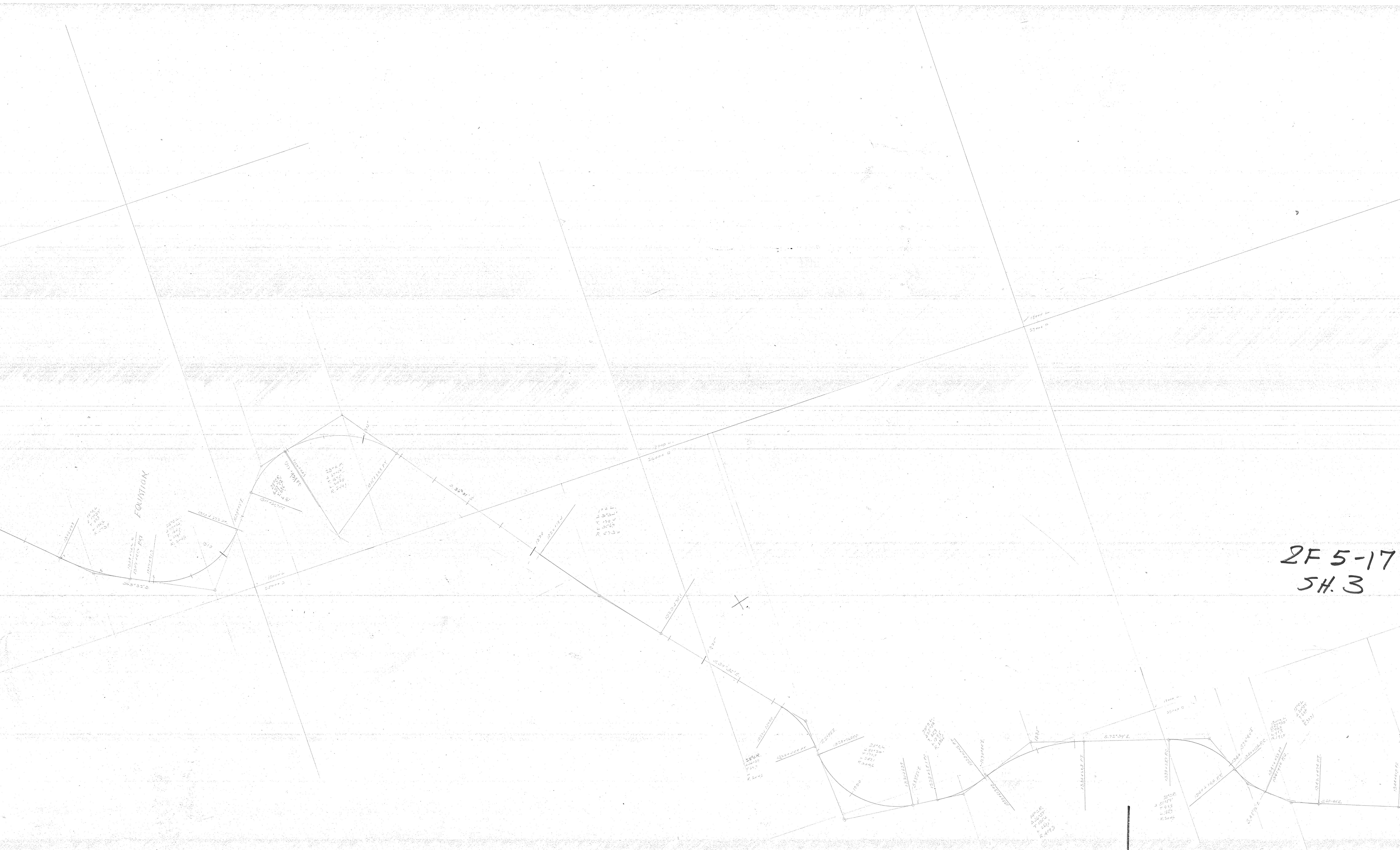
2F 5-17

SH. 1



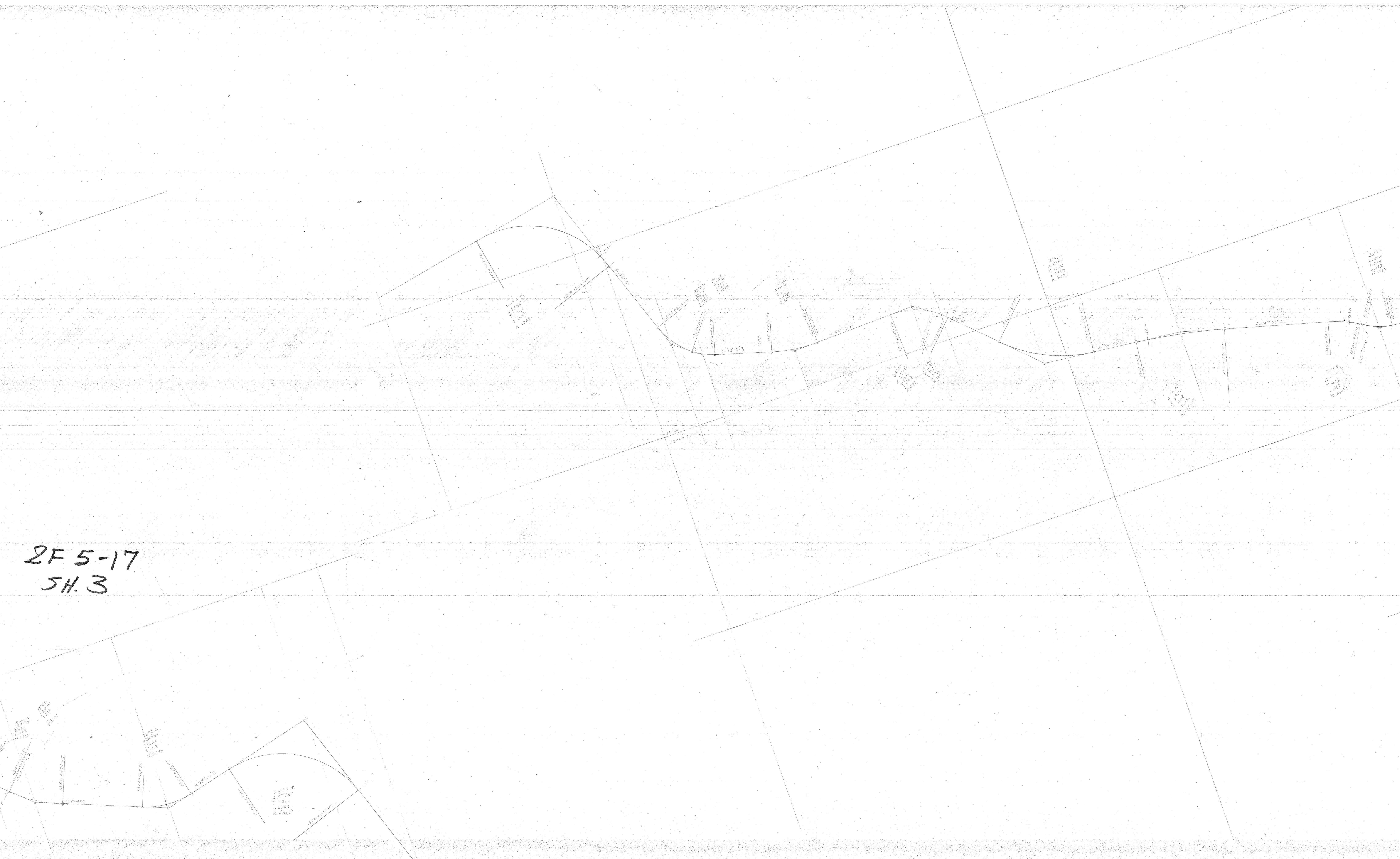
See final description for
the R/W. facies





2F5-17
SH.3

2F5-17
5H.3



A. 3381
T. 3381
L. 3381
R. 3381

150.00 FT
N 88° 05' E
100.00 FT

A. 3381
T. 3381
L. 3381
R. 3381

A. 3381
T. 3381
L. 3381
R. 3381

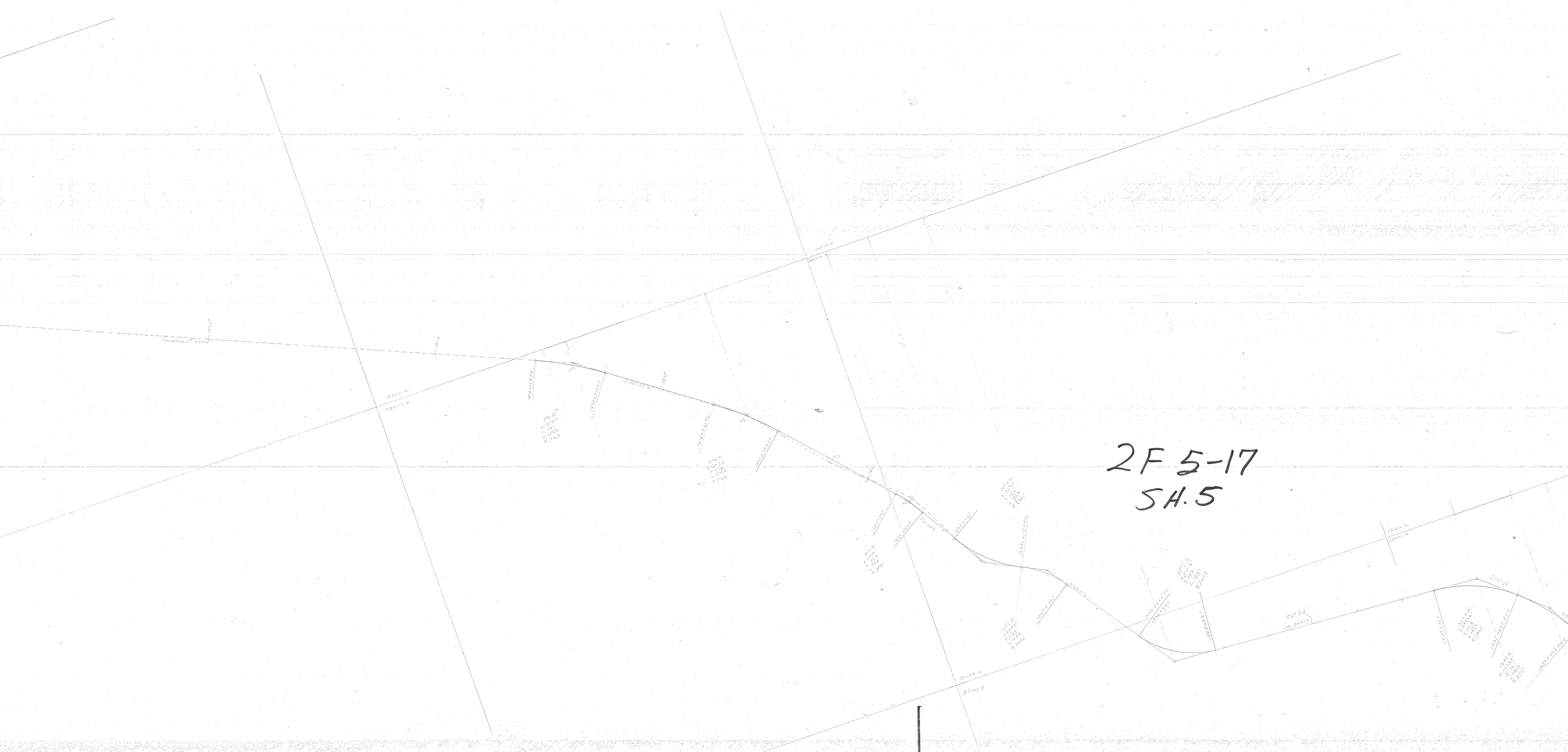
A. 3381
T. 3381
L. 3381
R. 3381

A. 3381
T. 3381
L. 3381
R. 3381

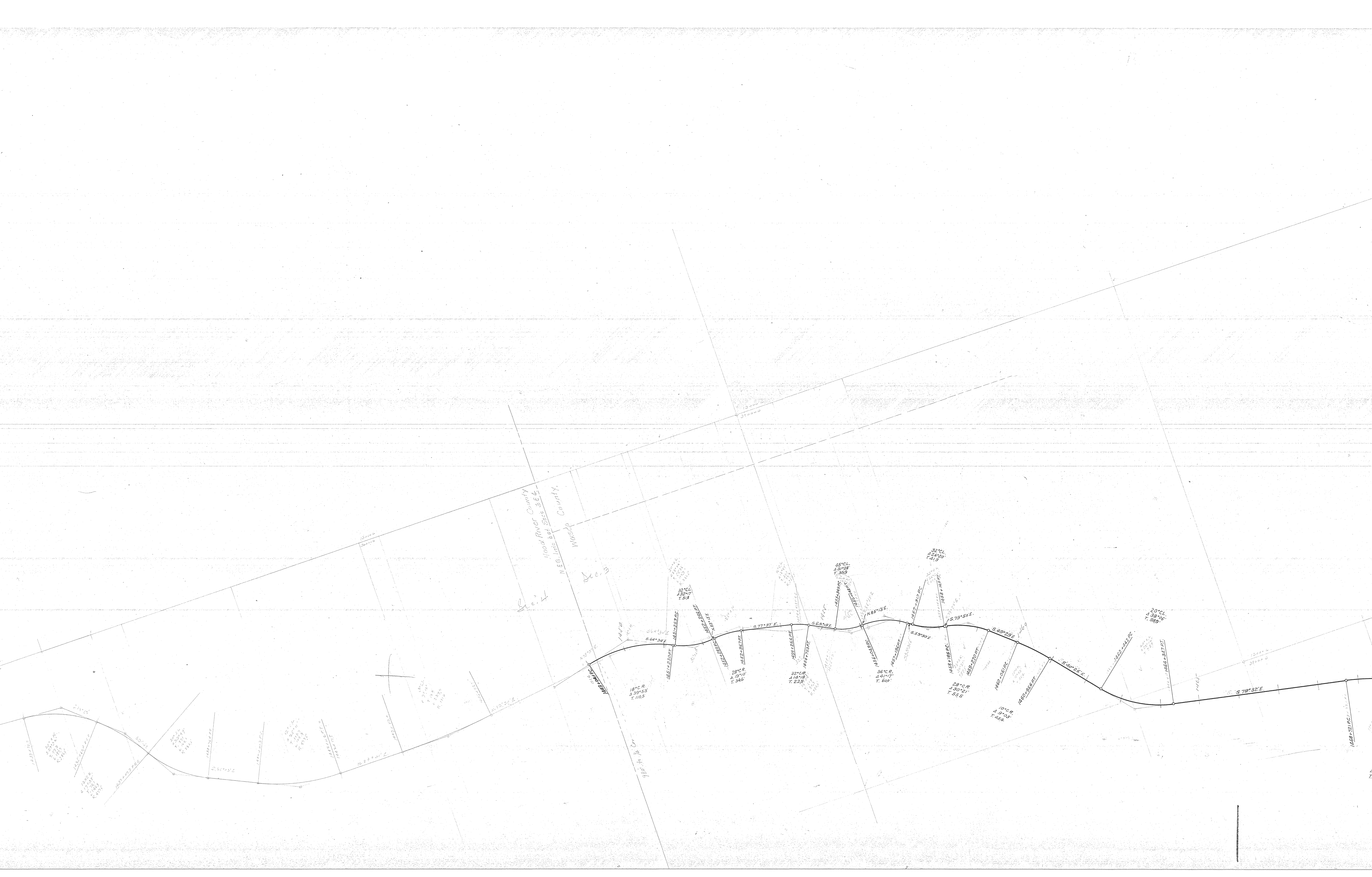
A. 3381
T. 3381
L. 3381
R. 3381



2F5-17
SH-4



2F 5-17
5A.5



Hood River County
Wasco County
N 56. Int. bet Secs 3 & 4

Sec. 3

1800 ft. Cr.

18° C.R.
A 1910
T. 345

32° C.L.
42620
T. 358

20° C.R.
A 1910
T. 345

32° C.R.
A 1910
T. 345

36° C.R.
A 1910
T. 345

20° C.R.
A 1910
T. 345

20° C.R.
A 1910
T. 345

20° C.R.
A 1910
T. 345

20° C.R.
A 1910
T. 345

20° C.R.
A 1910
T. 345

20° C.R.
A 1910
T. 345

20° C.R.
A 1910
T. 345

20° C.R.
A 1910
T. 345

20° C.R.
A 1910
T. 345

20° C.R.
A 1910
T. 345

20° C.R.
A 1910
T. 345

20° C.R.
A 1910
T. 345

20° C.R.
A 1910
T. 345

S 64° 30' E

S 77° 37' E

S 63° 40' E

S 53° 50' E

S 79° 50' E

S 43° 29' E

S 60° 26' E

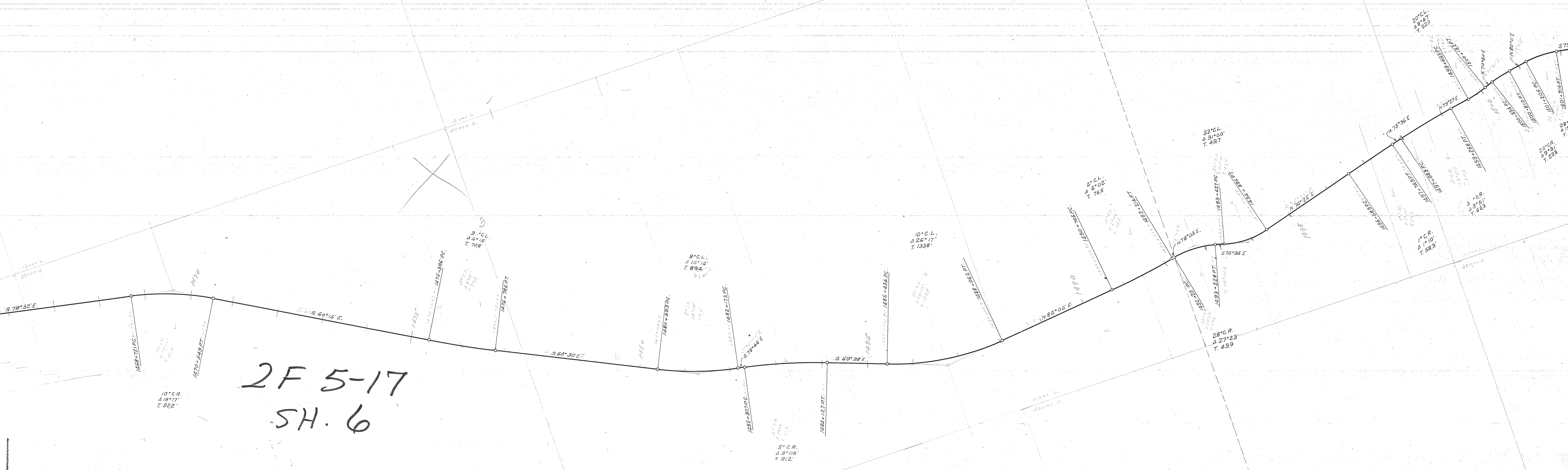
S 78° 32' E

S 78° 32' E

S 78° 32' E

S 78° 32' E

2F 5-17
SH. 6



10° C.R.
Δ 18° 17'
T. 9.82'

3° C.L.
Δ 4° 15'
T. 7.78'

8° C.L.
Δ 12° 14'
T. 8.94'

10° C.L.
Δ 26° 17'
T. 13.88'

32° C.L.
Δ 31° 00'
T. 4.97'

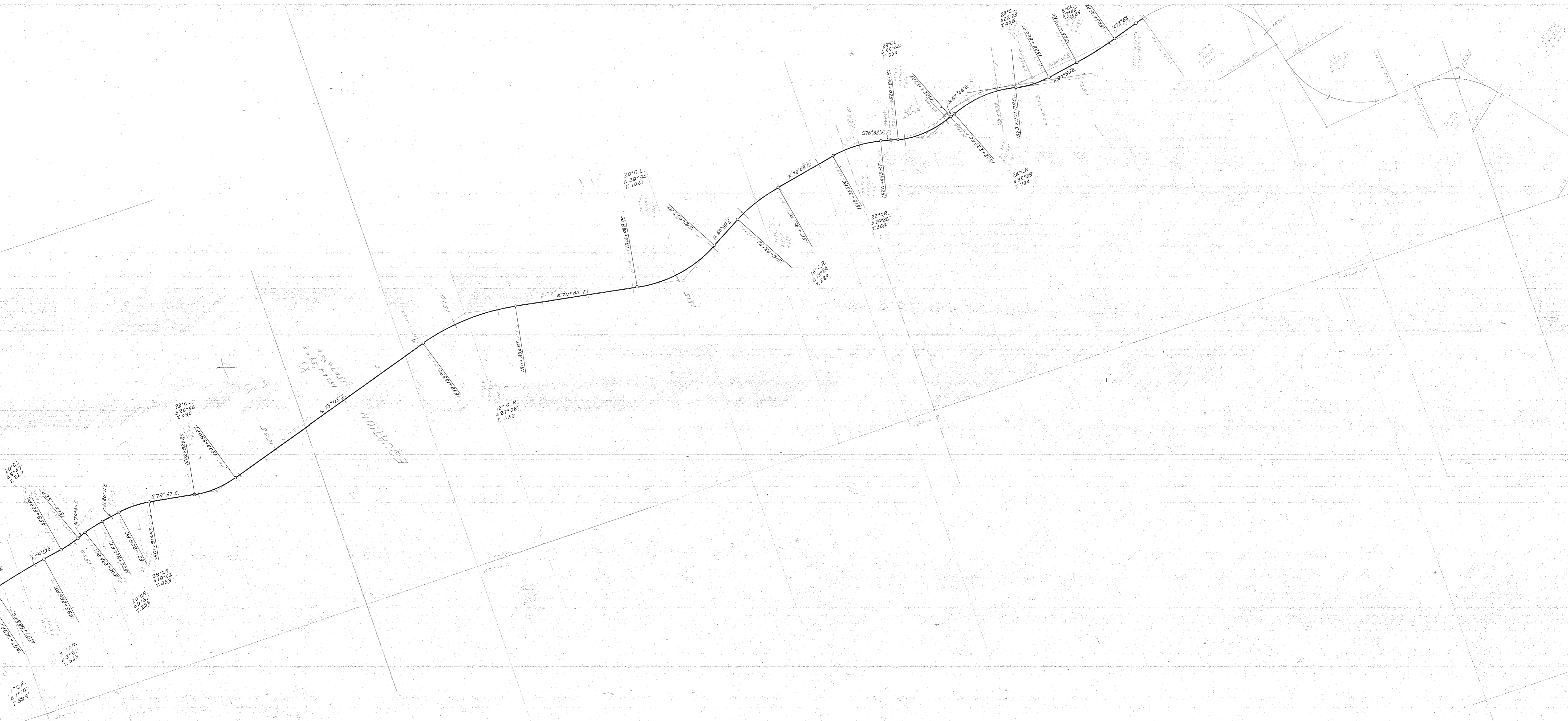
28° C.R.
Δ 27° 23'
T. 4.99'

20° C.L.
Δ 8° 27'
T. 2.53'

1° C.R.
Δ 1° 10'
T. 5.83'

28° C.L.
Δ 29° 23'
T. 2.38'

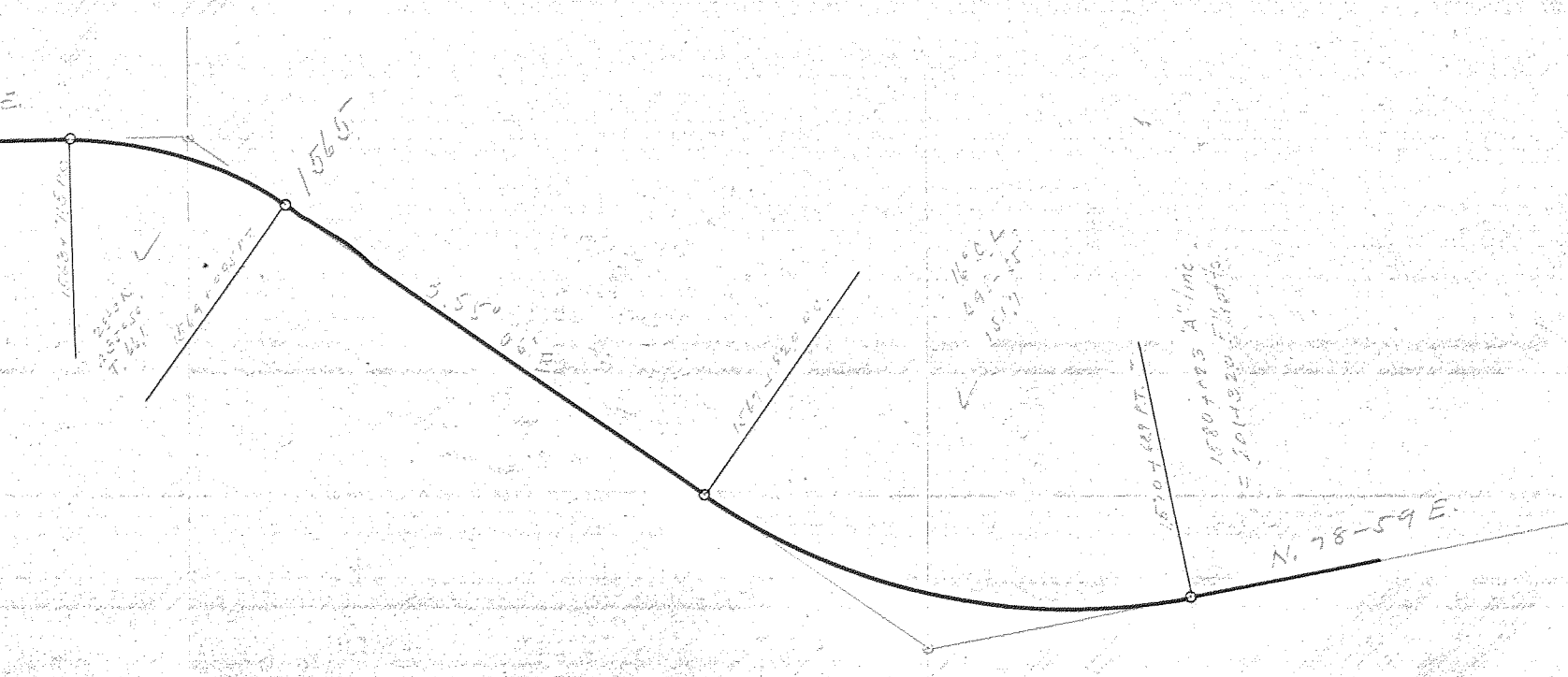
5° C.R.
Δ 9° 06'
T. 9.12'



2F 5-17
SH. 7



2F 5-17
5H. 8



45000

Sec 2 Sec 1