

OREGON STATE HIGHWAY DEPARTMENT

Relocated Line

thru

CASCADE LOCKS

COLUMBIA RIVER HIGHWAY

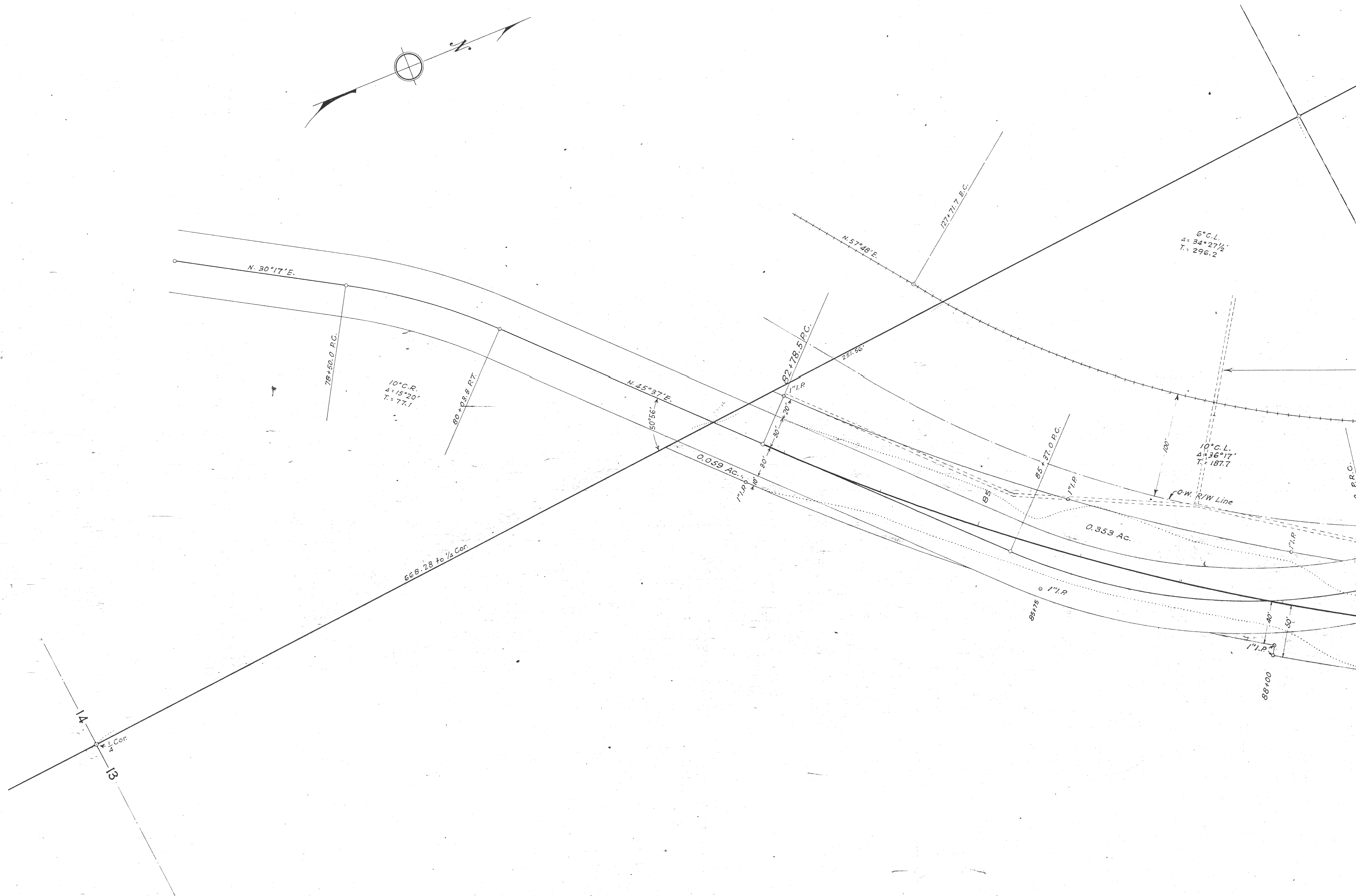
HOOD RIVER COUNTY

Scale 1 in. = 50 ft.

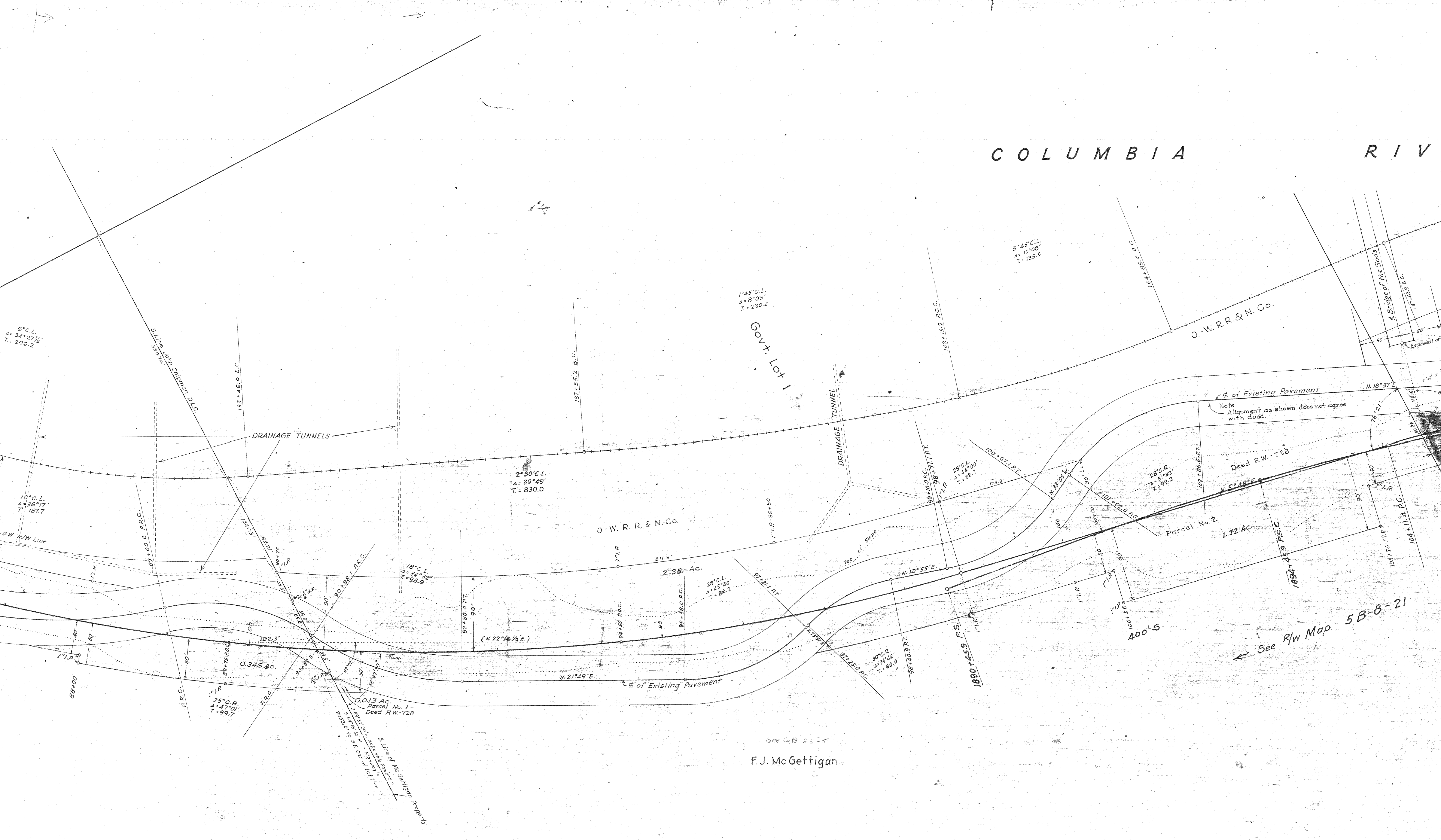
July, 1931
Revised Feb., 1932

DRG. No. 3B-24-17

*NOTE: This map has been revised to show
1935 Construction alignment.*

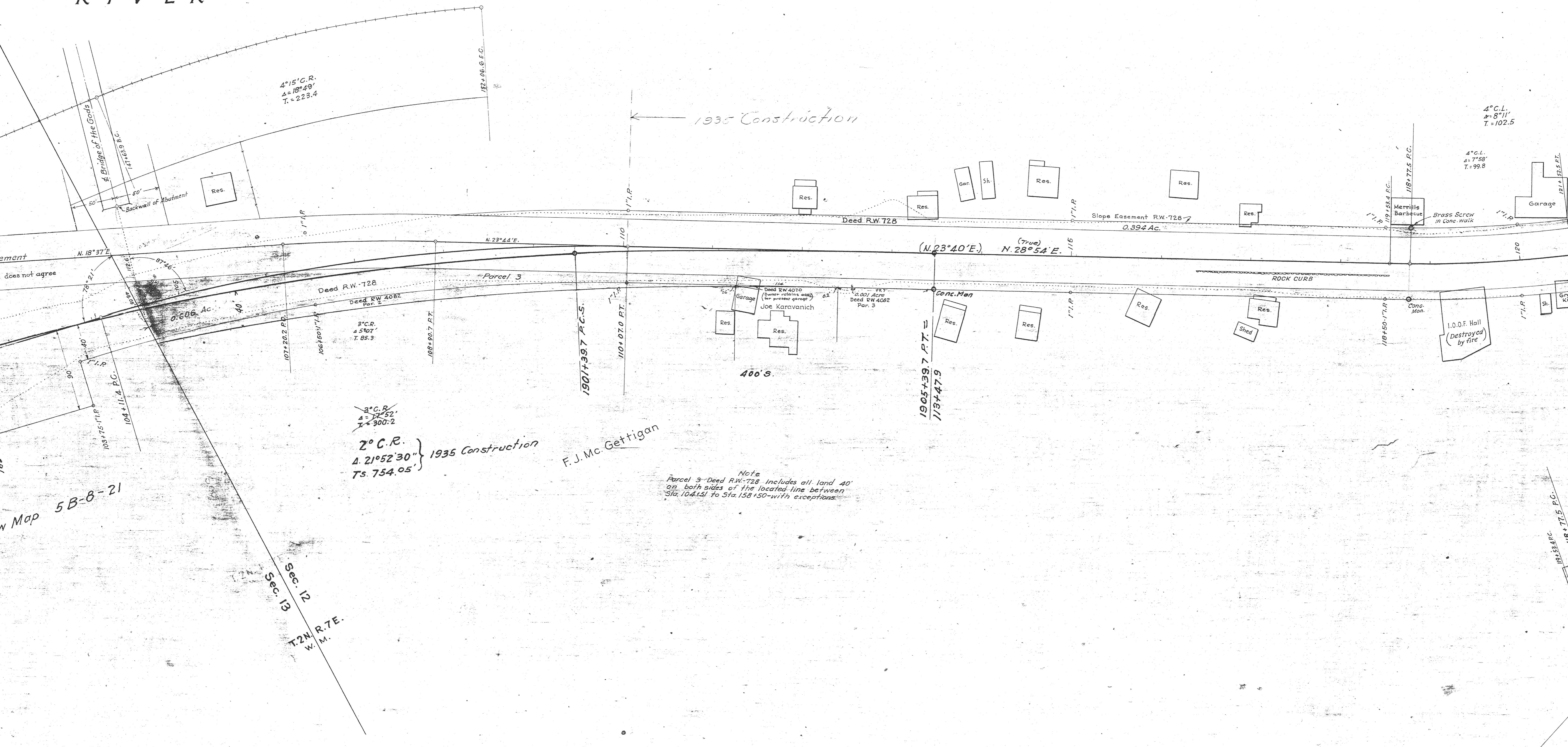


COLUMBIA RIVER



F. J. McGettigan

RIVER



4°15' C.R.
 $\Delta = 18^\circ 49'$
 $T = 223.4$

1935 Construction

4° C.L.
 $\Delta = 8^\circ 11'$
 $T = 102.5$

4° C.L.
 $\Delta = 7^\circ 58'$
 $T = 99.8$

3° C.R.
 $\Delta = 7^\circ 52'$
 $T = 300.2$

2° C.R.
 $\Delta = 21^\circ 52' 30''$
 $Ts. 754.05'$

1935 Construction

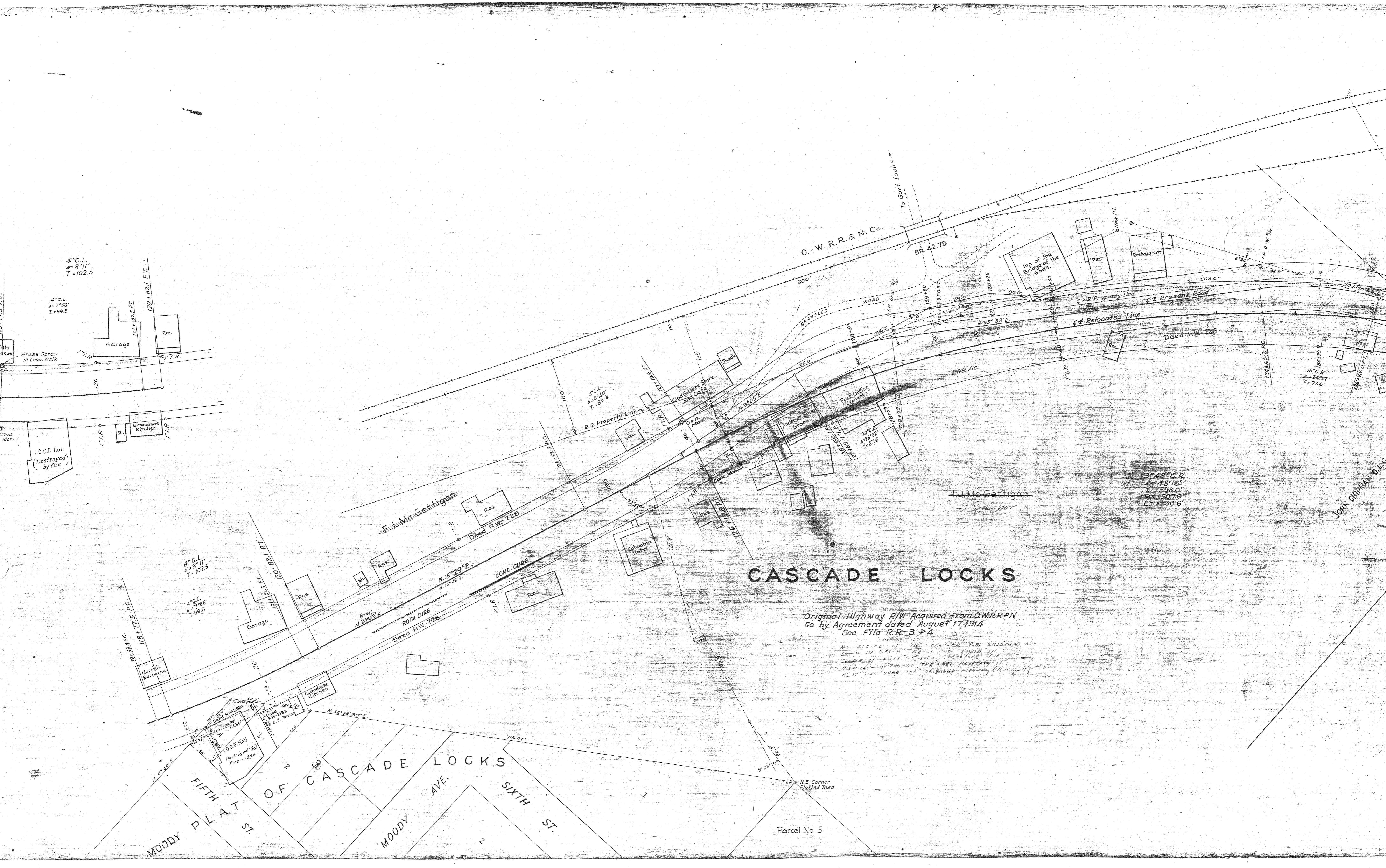
F.J. Mc. Gettigan

Note
 Parcel 3-Deed RW-728 includes all land 40'
 on both sides of the located line between
 Sta. 104+15.1 to Sta. 158+50'-with exceptions.

Map 5B-8-21

Sec. 13
 Sec. 13
 T.2N. R.7E.
 W. M.

118+53.4 P.C.
 118+77.5 P.C.



4° C.L.
 $\Delta = 8^{\circ} 11'$
 $T = 102.5$

4° C.L.
 $\Delta = 7^{\circ} 58'$
 $T = 99.8$

I.O.O.F. Hall
 (Destroyed
 by fire)

4° C.L.
 $\Delta = 8^{\circ} 11'$
 $T = 102.5$

4° C.L.
 $\Delta = 7^{\circ} 58'$
 $T = 99.8$

CASCAD LOCKS

Original Highway R/W Acquired from O.W.R.R. & N. Co.
 by Agreement dated August 17, 1914
 See File R.R. 3 & 4

No. RECORD OF THE RELEASED R.R. CHISEL IN
 SUMM. IN GREEN ABOVE AND PAID IN
 SEARCH OF ALL CHISELS THROUGH THE
 RECORDS OF THE TOWN OF CASCADE LOCKS
 AS IT WAS UNDER THE CHISEL HIGHWAY (R.R. 3 & 4)

2° 48' C.R.
 $\Delta = 43^{\circ} 16'$
 $T = 598.0$
 $L = 1507.9$
 $L = 1138.6$

MOODY P L W
 FIFTH ST
 OF CASCAD LOCKS
 MOODY AVE.
 SIXTH ST

Parcel No. 5

JOHN CHIPMAN D L C

DEPOT

O. W. R. R. & N. Co.

46

EQUATION

EQUATION

CEMETERY

127' 11" W. 70° 54'

16' C. R.
A = 24° 27'
T = 77.6

JOHN CHIPMAN D.L.C.

EQUATION

R.C. ATWELL D.L.C.

N. Line R.C. Atwell, D.L.C.

Parcel No. 7

HIGH SCHOOL
Dist. 1
Hood River County

J. B. Laber
F. J. McGettigan

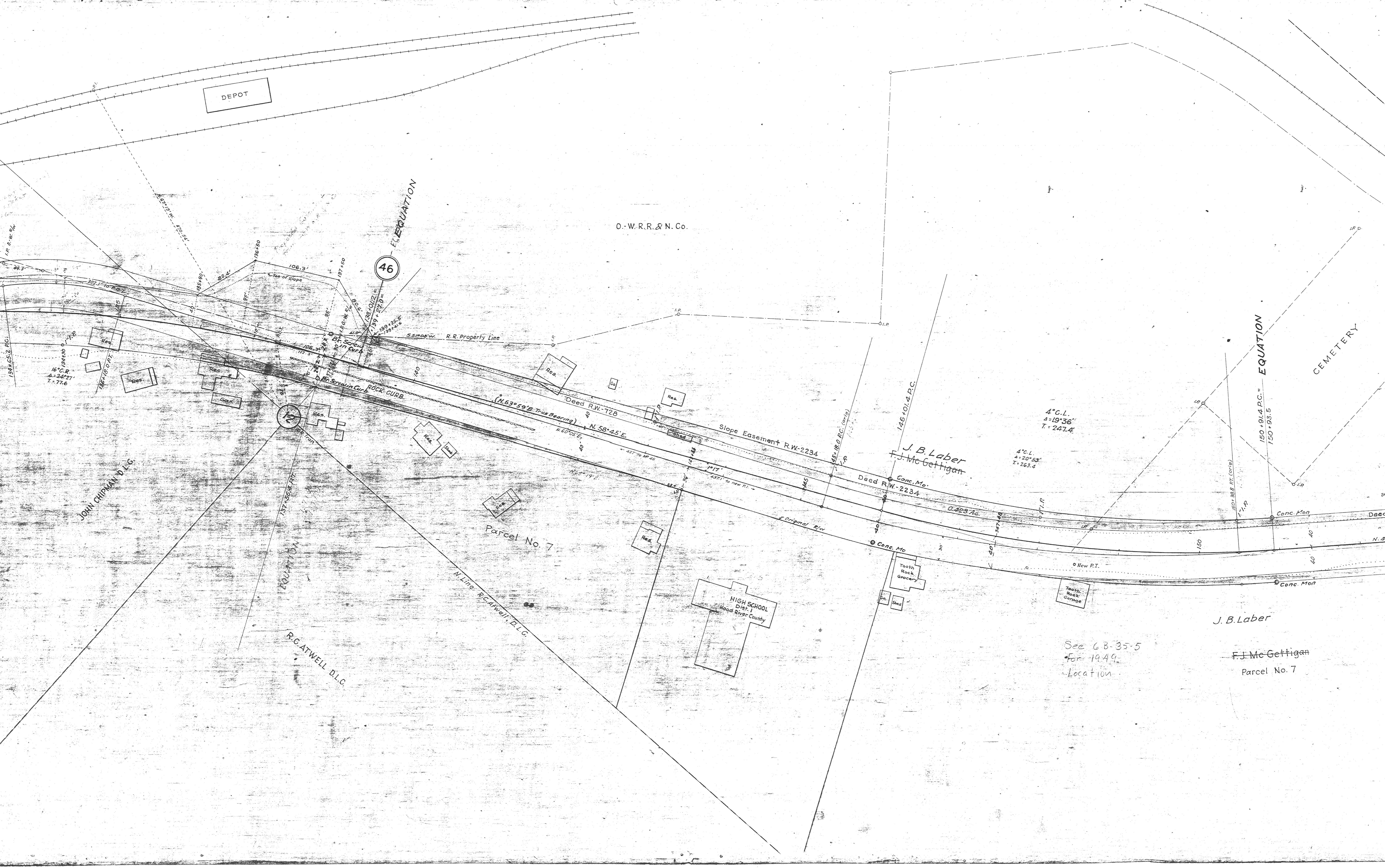
4° C.L.
A = 19° 36'
T = 247.4

4° C.L.
A = 20° 53'
T = 263.4

J. B. Laber

F. J. McGettigan
Parcel No. 7

See G.B-35-5
for 1949
Location



EQUATION

EQUATION

RELOCATED LINE thru CASCADE LOCKS

DRG. No. 3B 24 - 17

