

3B

Cascade Locks Hwy (Old Hwy 30) Relocated Line
3B-24-17 Rev. 1935

OREGON STATE HIGHWAY DEPARTMENT

Relocated Line

thru

CASCADE LOCKS

~~CASCADE LOCKS HIGHWAY~~
~~COLUMBIA RIVER HIGHWAY~~

HOOD RIVER COUNTY

Scale 1 in. = 50 ft.

July, 1931
Revised Feb., 1932

DRG. No. 3B-24-17

NOTE: This map has been revised to show
1935 construction alignment.

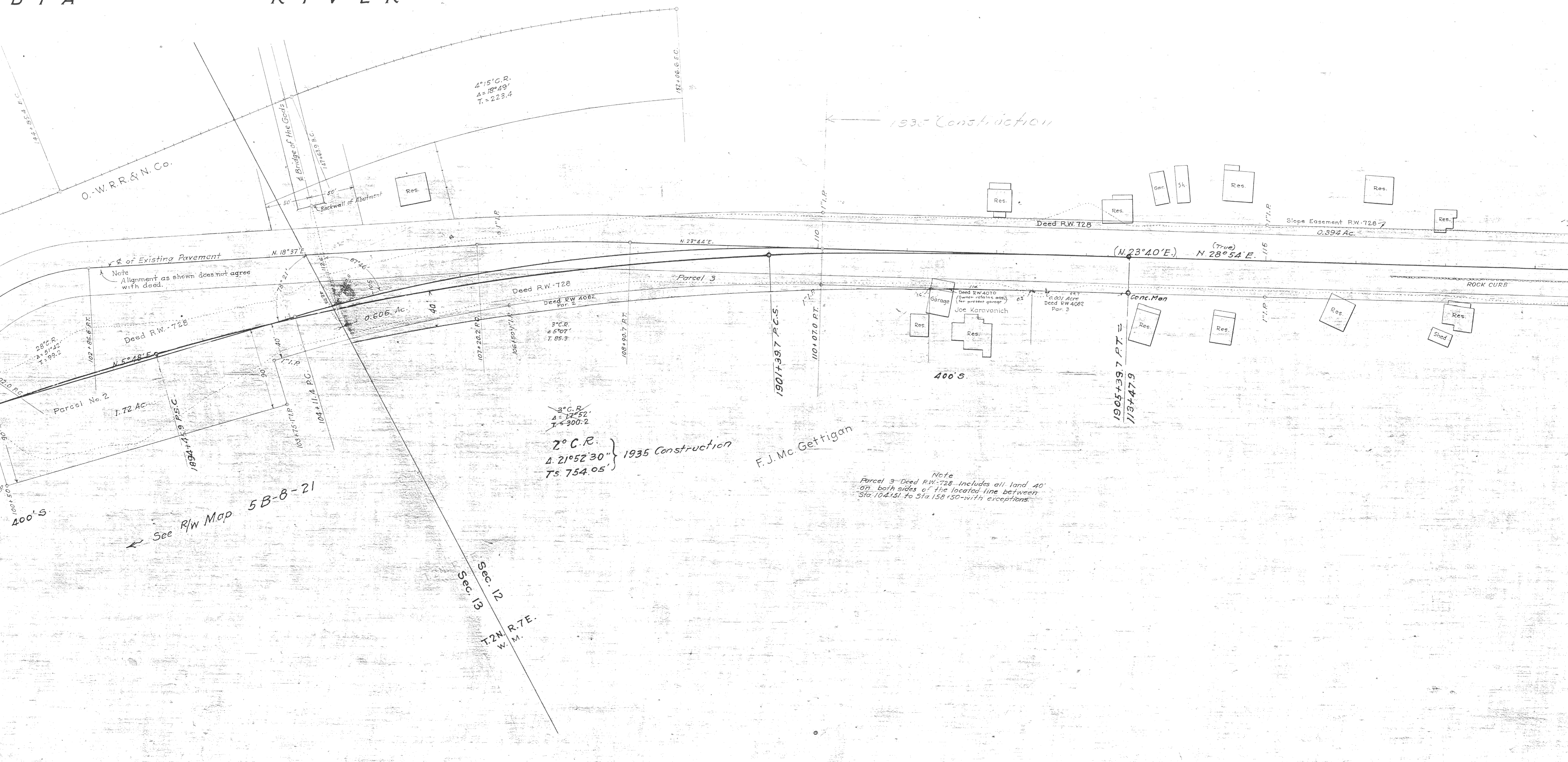


COLUMBIA



F. J. McGettigan

B I A R I V E R



O.W.R.R. & N. Co.

4°15' C.R.
Δ = 18°49'
T = 223.4

← 1935 Construction

of Existing Pavement
Note Alignment as shown does not agree with deed.

28° C.R.
Δ = 51°42'
T = 99.2

Deed R.W. 728

N. 18°37' E

0.606 Ac.

Deed R.W. 728

Deed R.W. 4082
Par. 2

N. 23°44' E

Parcel 3

(N. 23°40' E.) (True)
N. 28°54' E.

Slope Easement R.W. 728
0.394 Ac.

ROCK CURB

3° C.R.
Δ = 17°52'
T = 300.2

2° C.R.
Δ = 21°52'30"
T = 754.05

1935 Construction

F. J. Mc. Gettigan

Note
Parcel 3 Deed R.W. 728 includes all land 40' on both sides of the located line between Sta. 104+15.1 to Sta. 158+50.0 with exceptions.

See R/W Map 5B-8-21

Sec. 13
Sec. 12

T2N R.7E.
W.M.

400'S

400'S

Garage

Deed R.W. 4010
(Owner retains area for present garage)
Joe Keravanich

0.007 Acre
Deed R.W. 4082
Par. 3

Conc. Man

1905+39.7 P.T.
113+47.9

Res.

Res.

Shed

Res.

Res.

Res.

Res.

Gar.

Sh.

Res.

Res.

Res.

Res.

Backwall of Abutment

Bridge of the Gods

142+55.4 E.C.

152+06.6 E.C.

147+03.9 B.C.

107+20.2 P.C.

106+50.1 P.P.

108+90.7 P.T.

190+39.7 P.C.S.

110+07.0 P.T.

117.1 P.

116

117.1 P.

103+15.1 P.P.

104+11.4 P.C.

1884+15.9 P.S.C.

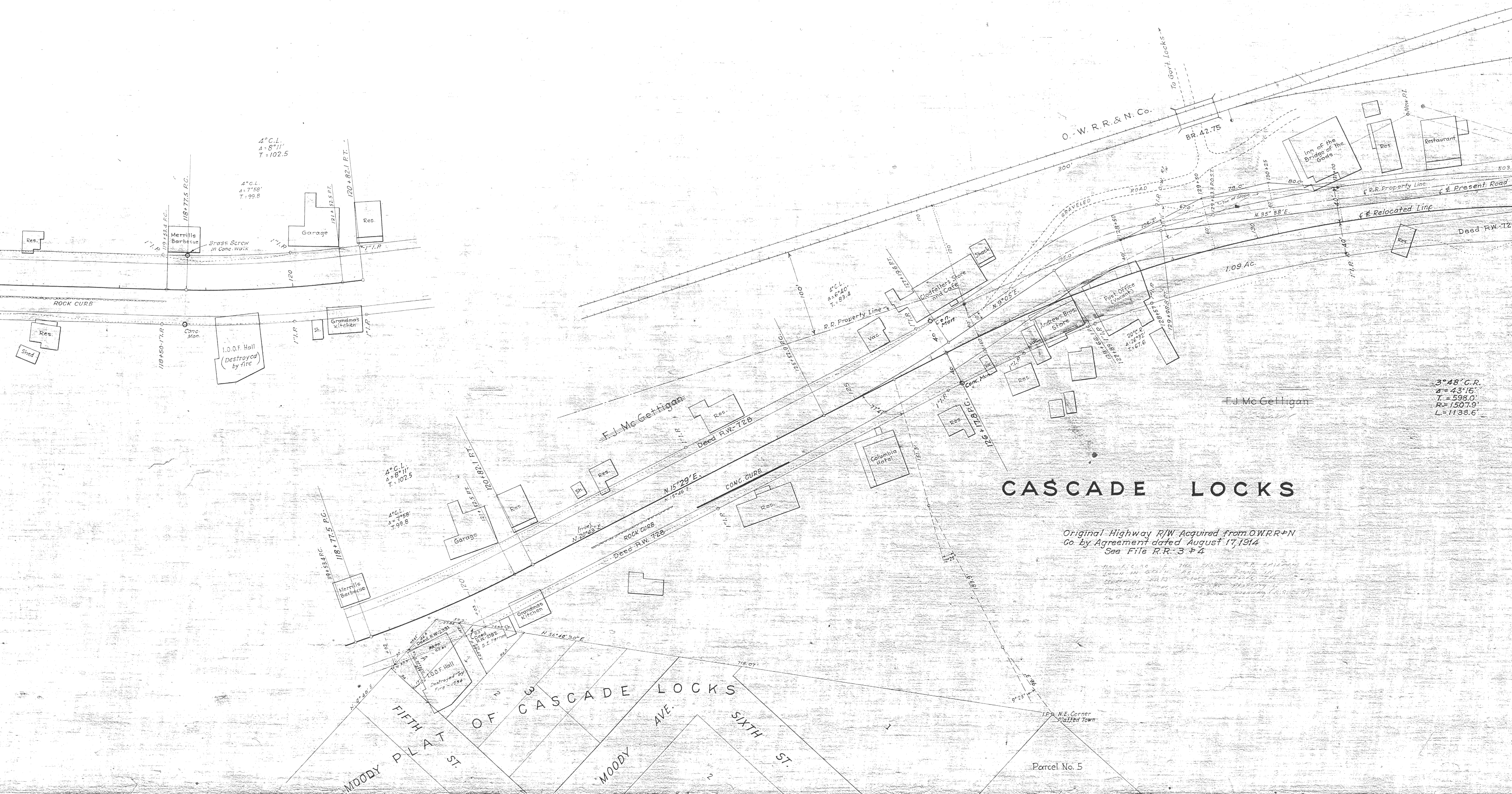
100+50.0

90

400'S

100+50.0

400'S



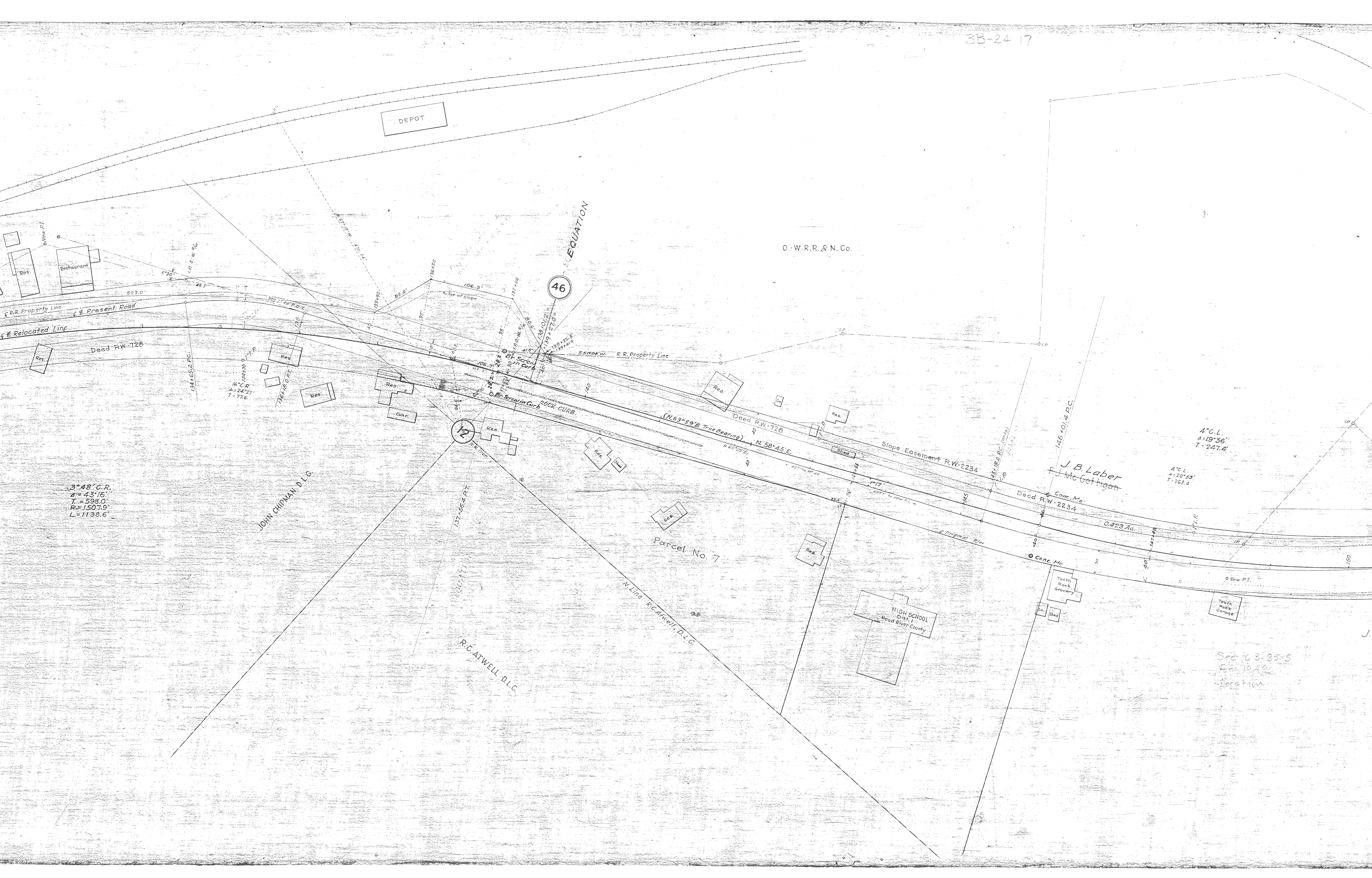
CASCADE LOCKS

Original Highway R/W Acquired from O.W.R.R. & N. Co. by Agreement dated August 17, 1914
See File R.R. 3 & 4

3° 48' C.R.
Δ = 43' 16"
T = 598.0'
R = 1507.9'
L = 1138.6'

FIFTH PLAT ST
MOODY AVE.
SIXTH ST

Parcel No. 5



DEPOT

O. W. R. R. & N. Co.

46

EQUATION

JOHN CHIPMAN D.L.G.

R.C. ATWELL D.L.G.

$3^{\circ}48' C.R.$
 $A = 43'16''$
 $T = 598.0'$
 $R = 1507.9'$
 $L = 1138.6'$

$4^{\circ} C.L.$
 $A = 19'36''$
 $T = 247.4'$

$4^{\circ} C.L.$
 $A = 20'53''$
 $T = 263.4'$

J. B. Laber
 F. J. McGettigan

Parcel No. 7

HIGH SCHOOL
 Dist. 1
 Hood River County

See 68-35-5
 For 10.10
 Location

Res.
 Restaurant

Res.
 Res.
 Res.

Res.
 Gar.

Res.

Res.

Res.

Res.

Res.

Res.

Tooth
 Rock
 Grocery

Tooth
 Rock
 Garage

R.R. Property Line

Present Road

Relocated Line

Deed R.W.-728

ROCK CURB

Deed R.W.-728

Slope Easement R.W.-2234

Deed R.W.-2234

0.423 Ac

original R/W

Cone, Mo

New P.T.

N Line R.C. Atwell D.L.G.

184 + 65.2 P.C.

16° C.R.
A = 24'27"
T = 77.6'

132 + 11.0 P.C.

126 + 18.0 P.T.

137 + 30.4 P.T.

12

106 + 28.2 P.C.

106 + 28.2 P.C.

106 + 28.2 P.C.

106 + 28.2 P.C.

106 + 28.2 P.C.

106 + 28.2 P.C.

106 + 28.2 P.C.

106 + 28.2 P.C.

106 + 28.2 P.C.

106 + 28.2 P.C.

106 + 28.2 P.C.

106 + 28.2 P.C.

106 + 28.2 P.C.

106 + 28.2 P.C.

106 + 28.2 P.C.

106 + 28.2 P.C.

106 + 28.2 P.C.

106 + 28.2 P.C.

106 + 28.2 P.C.

106 + 28.2 P.C.

106 + 28.2 P.C.

106 + 28.2 P.C.

106 + 28.2 P.C.

106 + 28.2 P.C.

106 + 28.2 P.C.

106 + 28.2 P.C.

106 + 28.2 P.C.

106 + 28.2 P.C.

106 + 28.2 P.C.

106 + 28.2 P.C.

106 + 28.2 P.C.

106 + 28.2 P.C.

106 + 28.2 P.C.

106 + 28.2 P.C.

106 + 28.2 P.C.

106 + 28.2 P.C.

106 + 28.2 P.C.

106 + 28.2 P.C.

106 + 28.2 P.C.

106 + 28.2 P.C.

106 + 28.2 P.C.

106 + 28.2 P.C.

106 + 28.2 P.C.

106 + 28.2 P.C.

106 + 28.2 P.C.

106 + 28.2 P.C.

106 + 28.2 P.C.

106 + 28.2 P.C.

106 + 28.2 P.C.

106 + 28.2 P.C.

106 + 28.2 P.C.

106 + 28.2 P.C.

106 + 28.2 P.C.

106 + 28.2 P.C.

106 + 28.2 P.C.

106 + 28.2 P.C.

106 + 28.2 P.C.

106 + 28.2 P.C.

106 + 28.2 P.C.

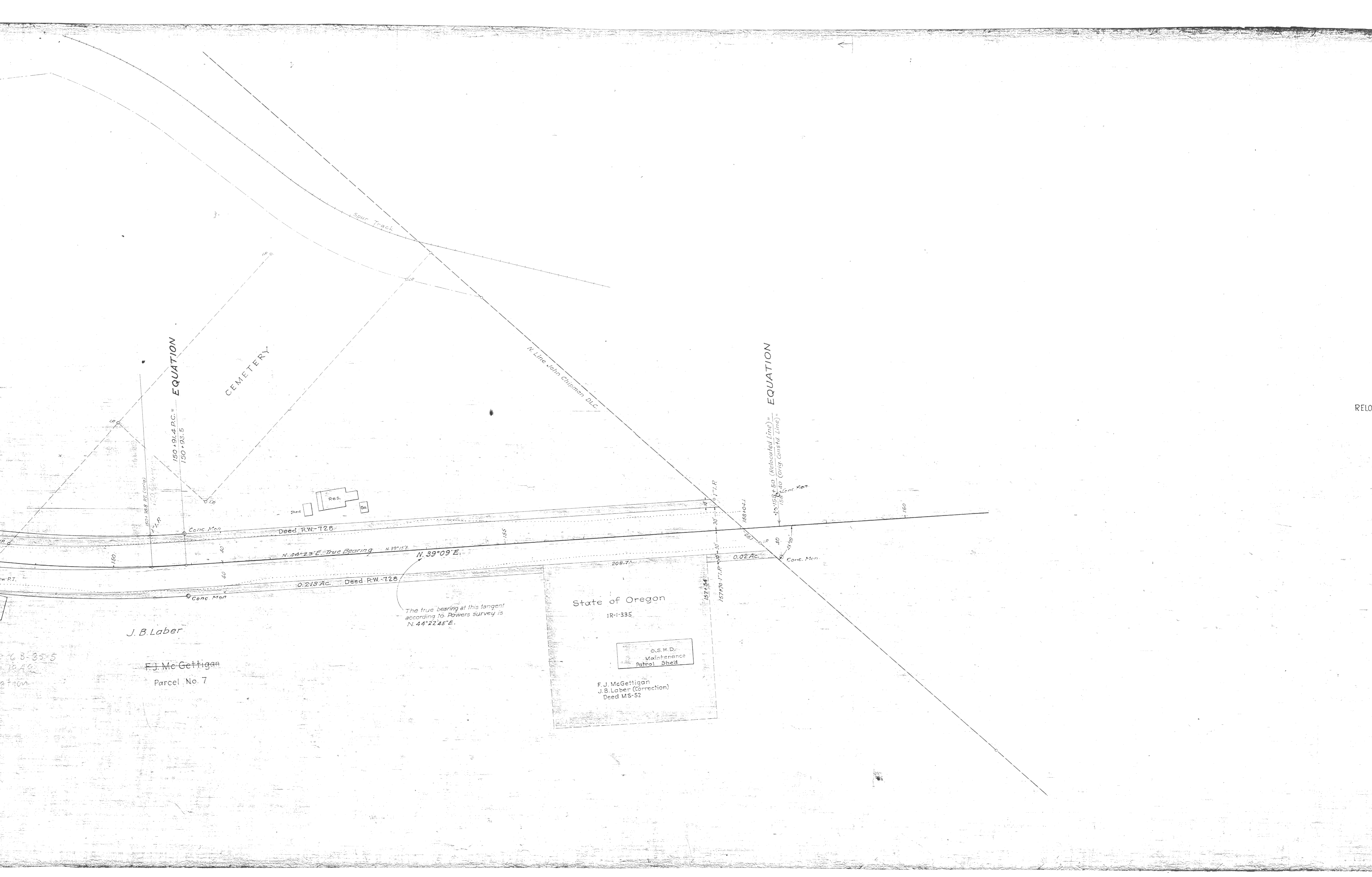
106 + 28.2 P.C.

106 + 28.2 P.C.

106 + 28.2 P.C.

106 + 28.2 P.C.

106 + 28.2 P.C.



EQUATION

CEMETERY

EQUATION

Spur Track

N. Line John Chipman D.L.C.

Res.

Shed

State of Oregon
IR-1-335

O.S.H.D.
Maintenance
Patrol Shed

F.J. McGettigan
J.B. Laber (Correction)
Deed MS-52

The true bearing at this tangent
according to Powers survey is
N. 44° 22' 45" E.

150 + 0.14 P.C. =
150 + 93.5

4 + 158 + 50 (Relocated Line) =
158 + 40 (Orig. Const'd Line) =

Deed R.W.-728

0.215 Ac Deed R.W.-728

0.02 Ac

N. 44° 23' E. True Bearing

N. 39° 09' E.

J. B. Laber

F.J. McGettigan
Parcel No. 7

6 B-35-5
1340
2700

RELO

RELOCATED LINE thru CASCADE LOCKS

DRG. NO. 3B 24-17

RELOCATED LINE thru CASCADE LOCKS

3B 24-17