

**LAKE BRANCH (LOST LAKE ROAD) BRIDGE SEC.**

OREGON STATE HIGHWAY DIVISION  
 Located Line

LOST LAKE ROAD  
 HOOD RIVER COUNTY

Scale: 1 inch = 50 feet

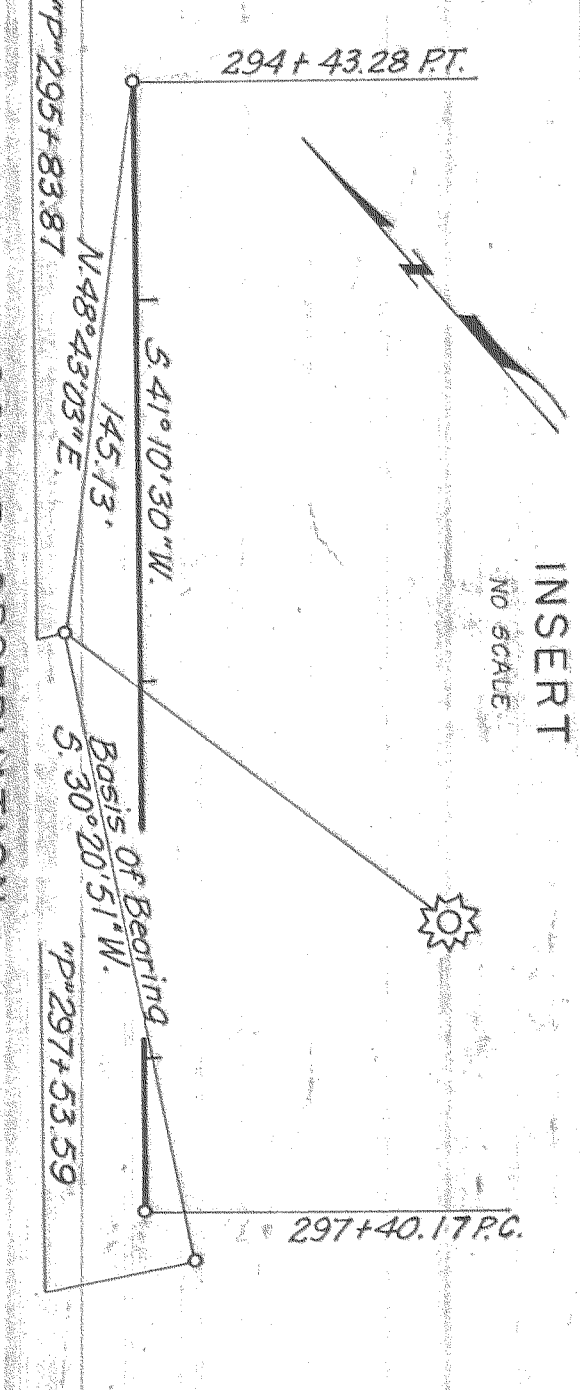
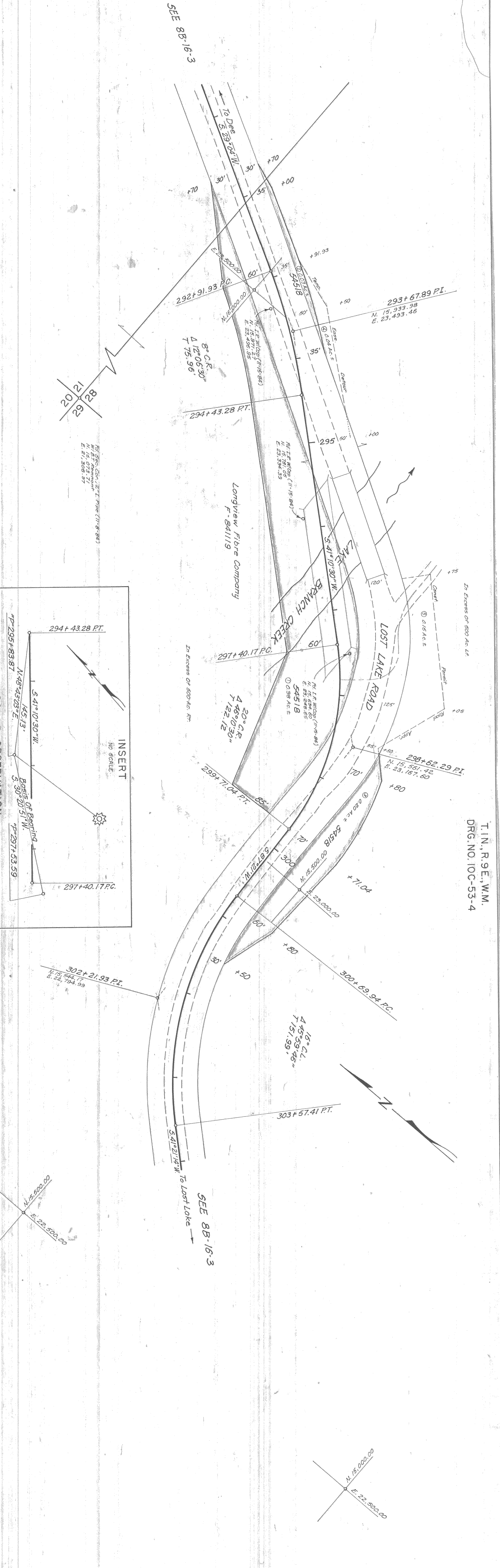
Traced by R.E.P.  
 May, 1985

TRUE BEARINGS BASED ON SOLAR OBSERVATION TAKEN  
 DEC. 15, 1983 BY FEDERAL HIGHWAY ADMINISTRATION SURVEY.

ASSUMED COORDINATES

DRG. NO. 10C-53-4

PRELIMINARY  
 Subject to Change



T.I.N., R.9.E., W.M.  
 DRG. NO. 10C-53-4

LAKE BRANCH (LOST LAKE ROAD) BRIDGE SEC.  
 LOST LAKE ROAD  
 HOOD RIVER COUNTY  
 SCALE: 1" = 50'  
 DRG. NO. 10C-53-4