

DRG. NO. 8B-23-14

SCALE: 1" = 100'

LOC. LINE

YAWHIGH HOOD RIVER SECTION

WHISKEY CREEK - HOOD RIVER SECTION

*Whiskey Creek → Hood River
Aug 35 1961
Loc. Line*

OREGON STATE HIGHWAY DEPARTMENT

Located Line

WHISKEY CREEK - HOOD RIVER SECTION

MT. HOOD HIGHWAY

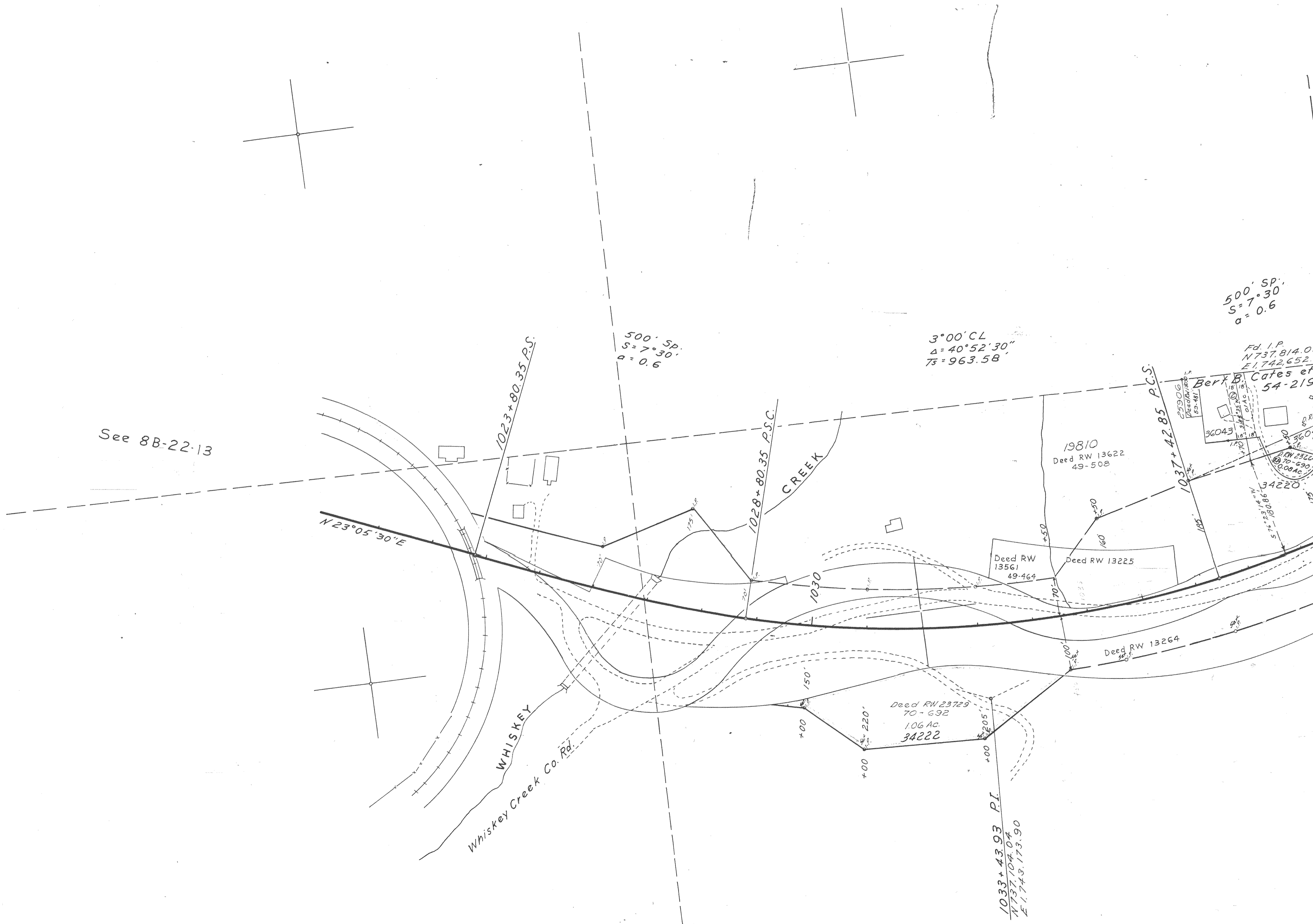
HOOD RIVER COUNTY

Scale: 1 inch = 100 feet

Traced by M.L.J. Aug., 1961

GRID BEARINGS-NORTH ZONE

DRG. NO. 8B-23-14



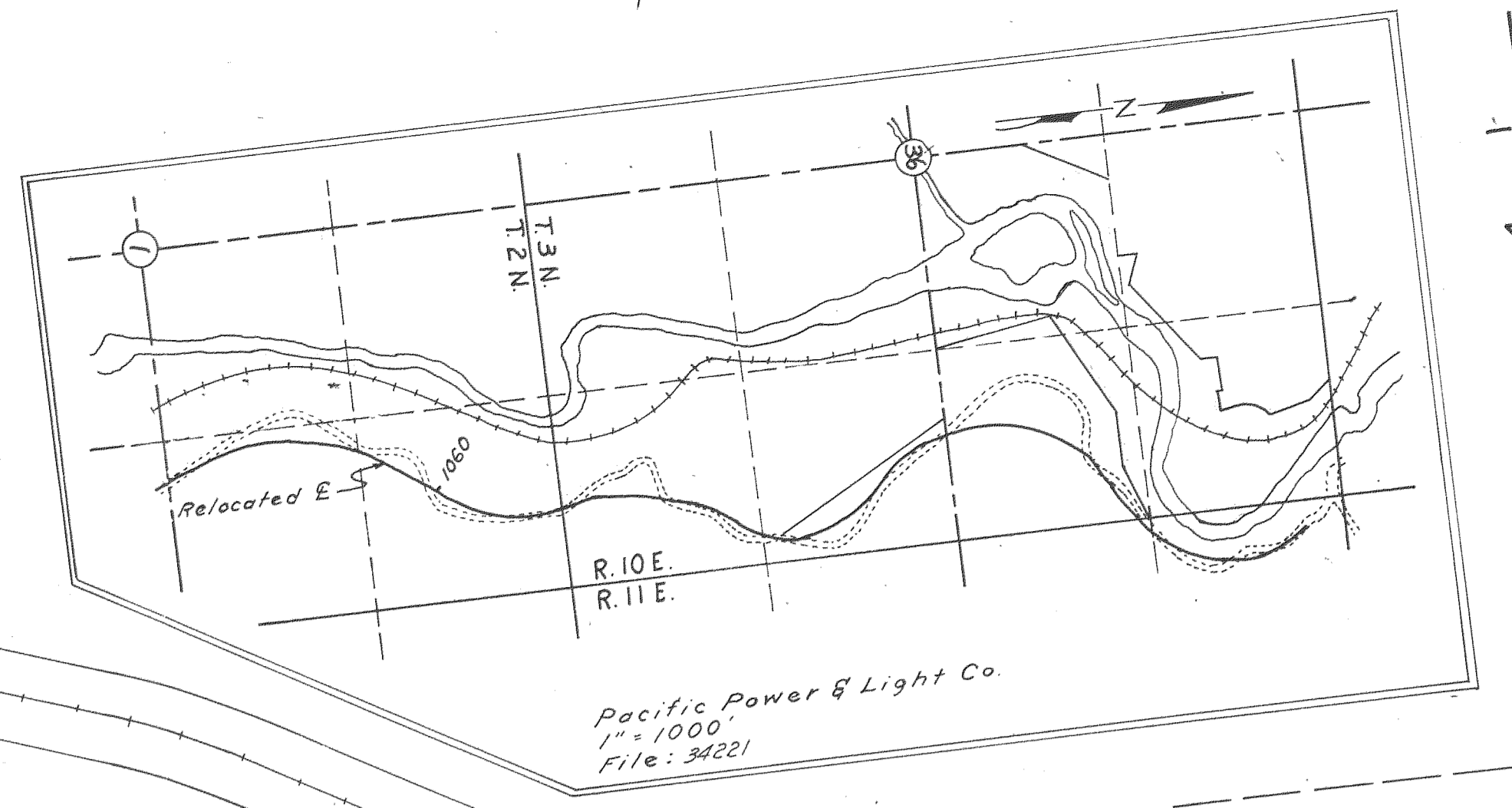
D-1035-61

E 1,742,000
N 738,000

Pacific Power & Light Co.
10-403

U.S.A. Transmission Line Ease.
28-179

1050+96.85 P.I.
N 738,834.77
E 1,742,618.78



Pacific Power & Light Co.
1" = 1000'
File: 34221

500' SP.
S = 7° 30'
a = 0.6

Fd. I.P.
N 737,814.03
E 1,742,652.18
Berk & Cates et al
54-219

1042+42.85 P.T.

1044+30.25 P.T.

Abandoned
To Abutting
Owners
R.R. 443

Pacific Power & Light Co
5-614

400' SP.
S = 14° 00'
a = 1.75

7° 00' CL
Δ = 51° 11'
Ts = 595.51

400' SP.
S = 14° 00'
a = 1.75

Fd. I.P.
N 737,813.16
E 1,742,881.18

0.83 Ac.
34222
120 Ac. = Rt.

Deed RW 14359

O.S.H.D.
51-448

450' SP.
S = 13° 30'
a = 1 1/3

6° 00' CR
Δ = 58° 46' 30"
Ts = 767.35'

450' SP.
S = 13° 30'
a = 1 1/3

Roy Webster Orchards, Inc.
44-610

FOR PRIOR RW ACQUISITION
SEE 7B-13-17

Pacific Power & Light Co.
5-614

1064+08.31 P.I.
N 739,904.01
E 1,743,547.98

Fd. I.P.
N 737,808.63
E 1,743,957.84

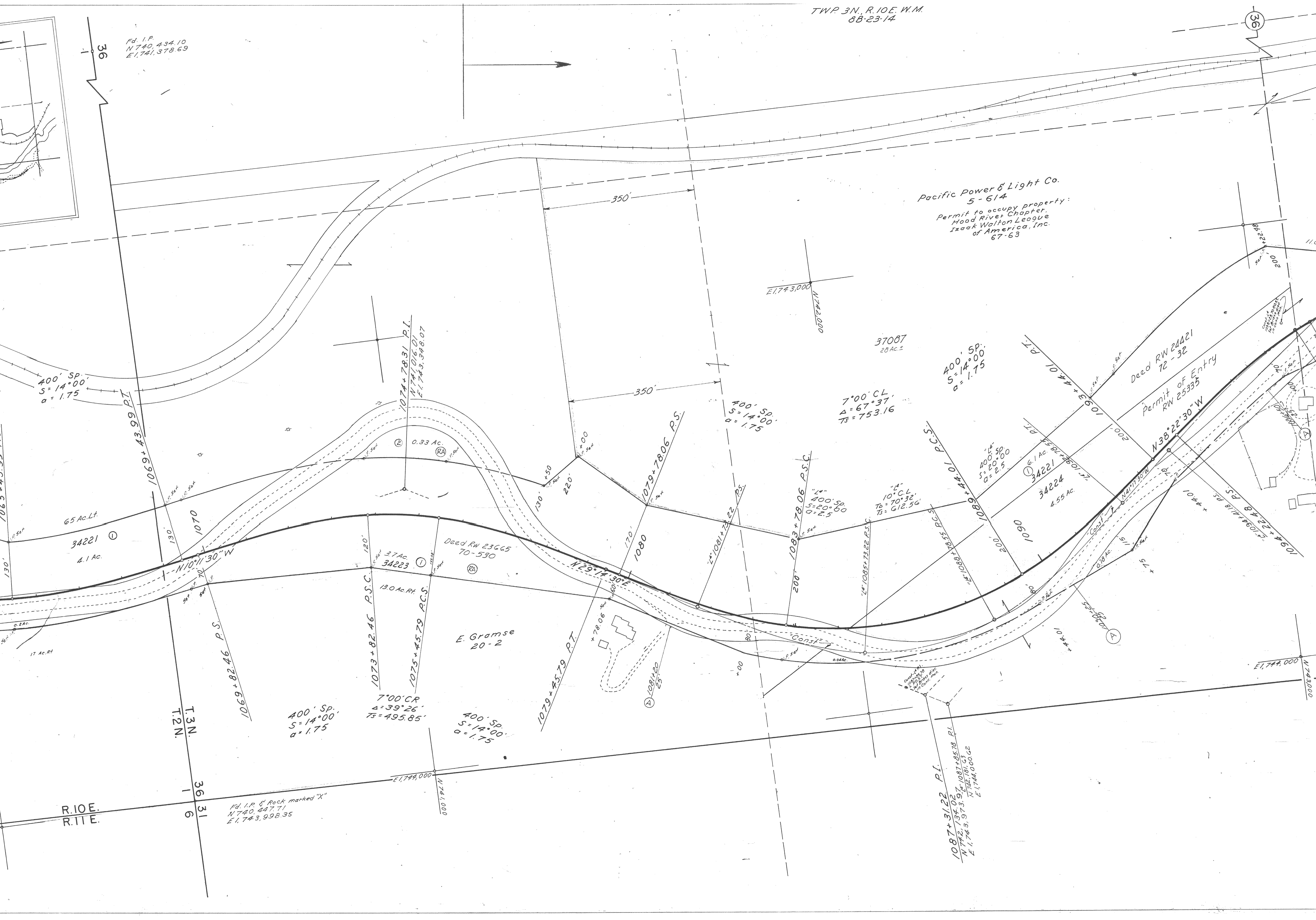
R.10E.
R.11E.

36

Fd. I.P.

Fd. I.P.
N 740, 434.10
E 1,741, 378.69

Pacific Power & Light Co.
5-614
Permit to occupy property:
Hood River Chapter,
Izaak Walton League
of America, Inc.
67-63



400' SP.
S=14°00'
a=1.75

400' SP.
S=14°00'
a=1.75

400' SP.
S=14°00'
a=1.75

7°00' CL.
Δ=67°37'
TS=753.16

400' SP.
S=14°00'
a=1.75

400' SP.
S=14°00'
a=1.75

Fd. I.P. & Rock marked "X"
N 740, 447.71
E 1,743, 998.35

1087+31.22 P.I.
N 742, 134.02
E 1,743, 973.37
N 1087+85.78 P.I.
N 742, 191.63
E 1,744, 000.62

R. 10E.
R. 11E.

T2N.
T3N.
36 31
6

E. Gramse
20-2

Dead RW 23665
70-530

Dead RW 24421
72-32

Permit of Entry
RW 25335

65 Ac. Lt.

34221
4.1 Ac.

37 Ac.
34223

6.1 Ac.
34221

4.55 Ac.
34224

1070

1071

130 Ac. Rt.

1073+82.46 P.S.C.

1075+45.79 P.S.C.

1079+45.79 P.T.

1080

1081+22.22 P.S.

1083+78.06 P.S.C.

1085+73.22 P.S.C.

1086+44.01 P.C.S.

1087+22.48 P.S.

1088+18.18 P.S.

1089+22.48 P.S.

1090+22.48 P.S.

1091+22.48 P.S.

E 1,744, 000
N 743, 000

E 1,743, 000
N 742, 000

37087
28 Ac. ±

37087
28 Ac. ±

37087
28 Ac. ±

37087
28 Ac. ±

37087
28 Ac. ±

37087
28 Ac. ±

37087
28 Ac. ±

37087
28 Ac. ±

37087
28 Ac. ±

37087
28 Ac. ±

37087
28 Ac. ±

37087
28 Ac. ±

37087
28 Ac. ±

37087
28 Ac. ±

37087
28 Ac. ±

37087
28 Ac. ±

37087
28 Ac. ±

37087
28 Ac. ±

37087
28 Ac. ±

37087
28 Ac. ±

37087
28 Ac. ±

37087
28 Ac. ±

37087
28 Ac. ±

37087
28 Ac. ±

37087
28 Ac. ±

37087
28 Ac. ±

37087
28 Ac. ±

37087
28 Ac. ±

37087
28 Ac. ±

37087
28 Ac. ±

37087
28 Ac. ±

37087
28 Ac. ±

37087
28 Ac. ±

37087
28 Ac. ±

37087
28 Ac. ±

37087
28 Ac. ±

37087
28 Ac. ±

37087
28 Ac. ±

37087
28 Ac. ±

37087
28 Ac. ±

37087
28 Ac. ±

37087
28 Ac. ±

37087
28 Ac. ±

37087
28 Ac. ±

37087
28 Ac. ±

37087
28 Ac. ±

37087
28 Ac. ±

37087
28 Ac. ±

37087
28 Ac. ±

37087
28 Ac. ±

37087
28 Ac. ±

37087
28 Ac. ±

37087
28 Ac. ±

37087
28 Ac. ±

37087
28 Ac. ±

37087
28 Ac. ±

37087
28 Ac. ±

37087
28 Ac. ±

37087
28 Ac. ±

37087
28 Ac. ±

37087
28 Ac. ±

37087
28 Ac. ±

37087
28 Ac. ±

37087
28 Ac. ±

37087
28 Ac. ±

37087
28 Ac. ±

37087
28 Ac. ±

37087
28 Ac. ±

37087
28 Ac. ±

37087
28 Ac. ±

37087
28 Ac. ±

37087
28 Ac. ±

37087
28 Ac. ±

37087
28 Ac. ±

37087
28 Ac. ±

37087
28 Ac. ±

37087
28 Ac. ±

37087
28 Ac. ±

37087
28 Ac. ±

37087
28 Ac. ±

37087
28 Ac. ±

37087
28 Ac. ±

37087
28 Ac. ±

37087
28 Ac. ±

37087
28 Ac. ±

37087
28 Ac. ±

37087
28 Ac. ±

37087
28 Ac. ±

37087
28 Ac. ±

37087
28 Ac. ±

37087
28 Ac. ±

37087
28 Ac. ±

37087
28 Ac. ±

37087
28 Ac. ±

37087
28 Ac. ±

37087
28 Ac. ±

37087
28 Ac. ±

37087
28 Ac. ±

Pacific Power & Light
5-614

HOOD RIVER

Pacific Power & Light Co.
10-379

Abandoned To Abutting
Owners RR 443

110 Ac. Lt.

Final Judg RW
25335
6.6 Ac.
34224
22 Ac. Rt.

8°00' CR
A = 99°29'
Ts = 1056.20'

R.M. & B.M. Downing
30-229

400' SP.
S = 16°00'
a = 2.0

400' SP.
S = 16°00'
a = 2.0

400' SP.
S = 18°00'
a = 2.25

400' SP.
S = 18°00'
a = 2.25

9°00' CL
A = 91°16'30"
Ts = 860.96'

T.H. & R.H. Applegate
62-606
34229
2.65 Ac.
Deed RW 23945
71-179

Hood River County
28-11 No. 30
34231
0.83 Ac.
(Tax Foreclosure)

J.E. & L.M. Plog
37-200
34228
3.0 Ac.
Deed RW 23779
70-528

O.S.H.D.
23-340

Fd. I.P.
N 745.294.78
E 1,744.408.35

Ann Clegg
68-145

L.N. & Lila Miller
47-407

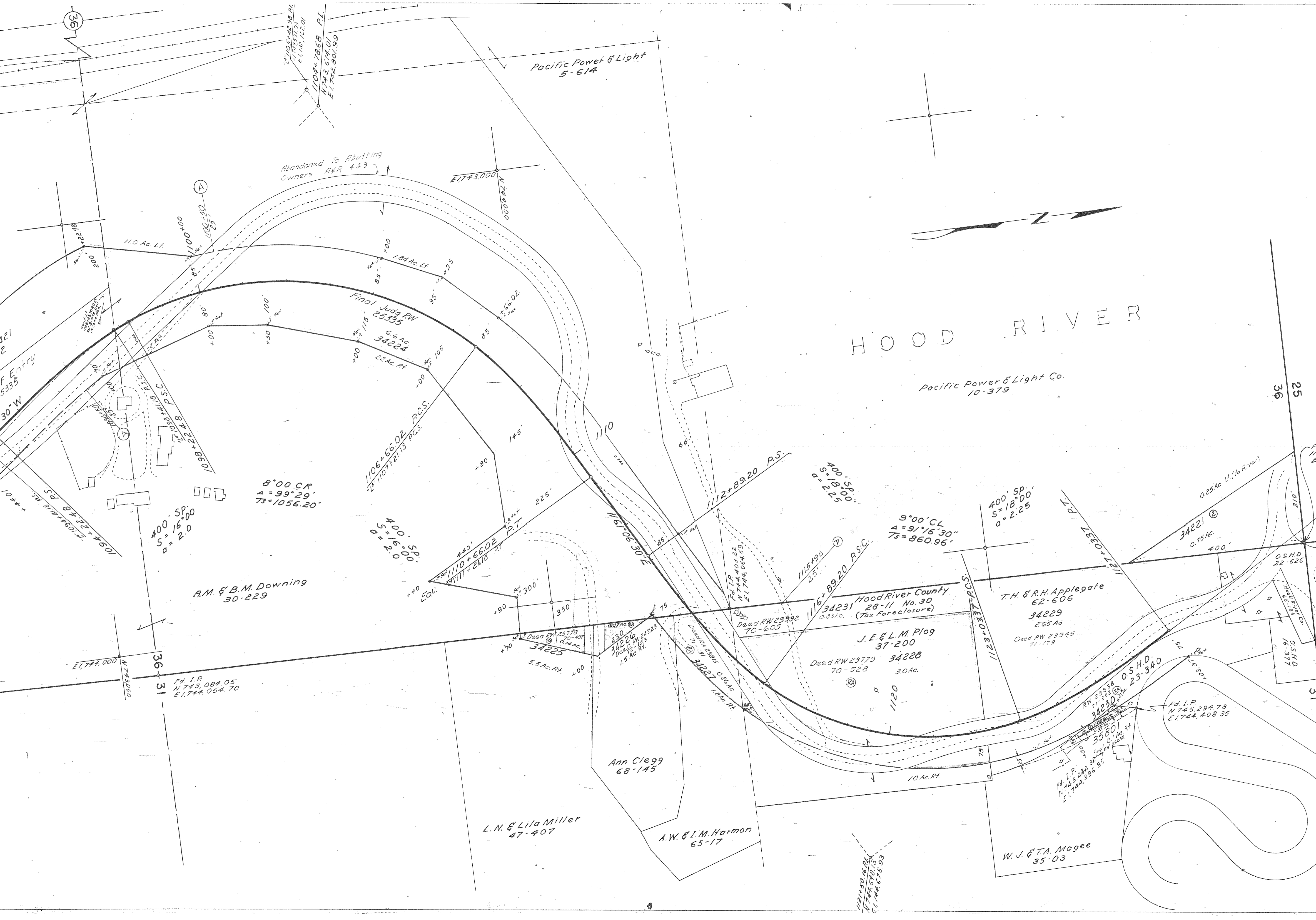
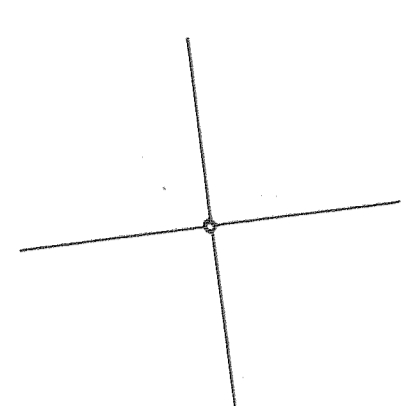
A.W. & L.M. Harmon
65-17

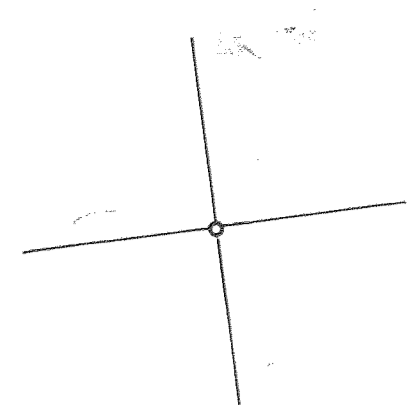
W.J. & T.A. Magee
35-03

36

25

31





WHISKEY CREEK - HOOD RIVER SECTION
MT. HOOD HIGHWAY
SCALE: 1" = 100'
DRG. NO. 8B-23-14

