

2ND ST. INTERCHANGE (HOOD RIVER) SEC. COLUMBIA RIVER HIGHWAY HOOD RIVER COUNTY

OREGON DEPARTMENT OF TRANSPORTATION
Located Line
Scale 1 inch = 50 feet
OCTOBER, 1992

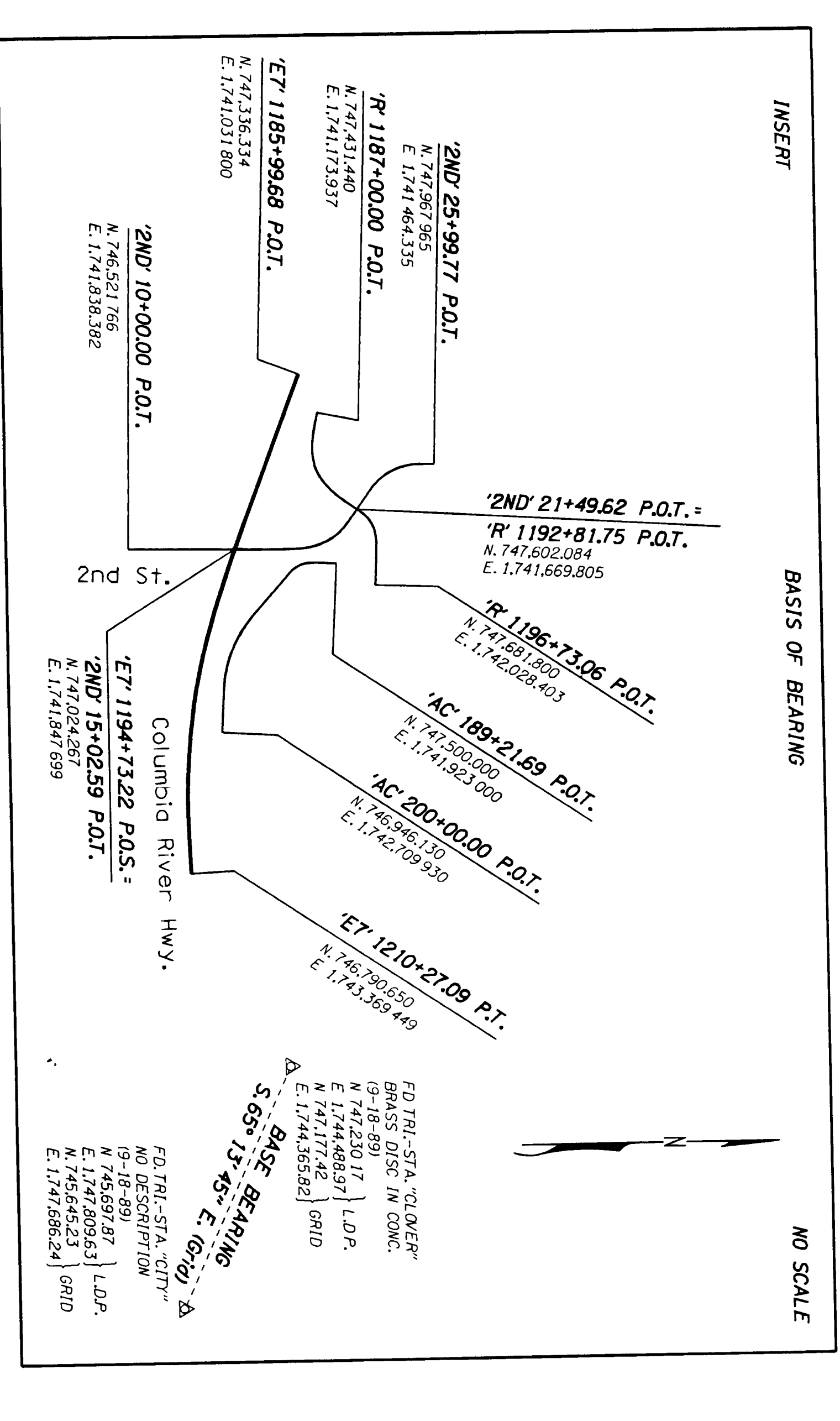
REVISED: November, 1993
November, 1993
August, 1993
February, 1993
July, 1993

BEARINGS Oregon Coordinate System of 1927, north zone.
COORDINATES This drawing utilizes a Local Datum Plane (LDP) which is relative to the Oregon Coordinate System and ground elevation. The LDP coordinates define true ground distances. To convert the LDP coordinates into Oregon coordinates by 5892934.

FIELD NOTES This drawing shows the results of an Oregon State Highway Division (OSHD) survey. The field survey notes, book number 3134, are available from OSHD files in Salem, Oregon.
PROJECT NO. 8653
DRG. NO. 1A-22-14
ACCESS CONTROL LINE



Also used to determine relative property line locations on this map were the following Hood River County Record Surveys and Subdivision Plats:
C.S. 1026, filed 9-28-71
C.S. 1024, filed 9-21-71
C.S. 8656, dated 6-19-70
C.S. 8805, filed 5-24-69
C.S. 9835, filed 5-24-69
TOWN OF HOOD RIVER
ADDITION TO HOOD RIVER
The Record Survey numbers and Subdivision Plat names have been placed on the map in their respective positions.



SEC. 25, 1, 3 N., R. 10 E., W.M.
DRG. NO. 1A-22-14
PROJECT NO. 8653

SEE 68-24-4 FOR PRIOR RW

2ND ST. INTERCHANGE (HOOD RIVER) SEC. COLUMBIA RIVER HIGHWAY HOOD RIVER COUNTY LOCATED LINE SCALE 1" = 50' DRG. NO. 1A-22-14 PROJECT NO. 8653