

LAND CORNER MONUMENT RECORD

INDEX FILE No. A9 USDA-FOREST SERVICE

LOCATION

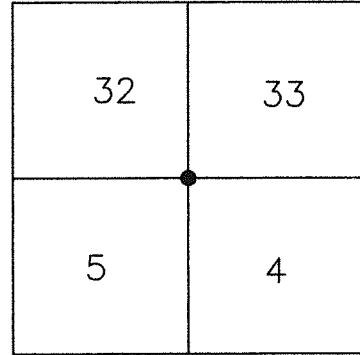
CC 1204

HOOD RIVER COUNTY
STATE OF OREGON
WILLAMETTE MERIDIAN

R. 8 E.

T.
2
N.

	6	5	4	3	2	1
	7	8	9	10	11	12
	18	17	16	15	14	13
	19	20	21	22	23	24
	30	29	28	27	26	25
	31	32	33	34	35	36



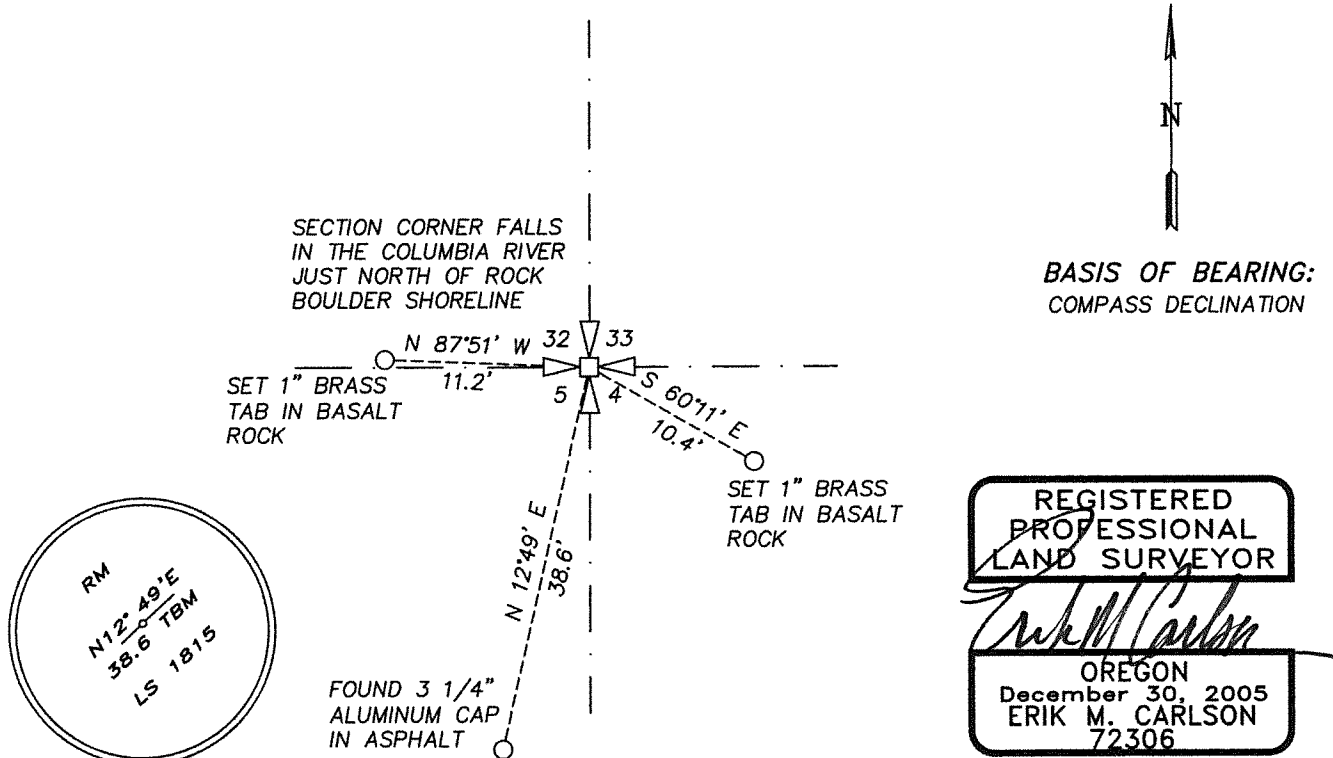
TOWNSHIP 2 NORTH

RANGE 8 EAST

SECTION 4/5/23/33 CORNER

TYPE OF MONUMENT; TIES TO BEARING TREES, OBJECTS, etc.

(SKETCH)



REGISTERED
PROFESSIONAL
LAND SURVEYOR

Erik M. Carlson

OREGON
December 30, 2005
ERIK M. CARLSON
72306

Expires: December 31, 2023

Found 3 1/4" aluminum cap, a reference monument to the section corner (A-9) common to Section 4, 5, 32, and 33, of Township 2 North, Range 8 East. Actual Section corner falls in the Columbia River.

Existing references:
3 1/4" aluminum cap bears South 12°49' West a distance of 38.6 feet.

New references set:
1" brass tab, L.S. 72306, in large basalt boulder bears North 87°51' West a distance of 11.2 feet.
1" brass tab, L.S. 72306, in large basalt boulder bears South 60°11' East a distance of 10.4 feet.

REMARKS: (History of Corner, etc.)

5/1992 - NO EVIDENCE OF MONUMENT FOUND, DETERMINED LOST BY L.S.2209, C.S.93070.
5/1992 - 2 1/2" X 36" ALUMINUM PIPE WITH 3 1/4" ALUMINUM CAP SET BY L.S. 2209, C.S.93070.

DIRECTIONS TO CORNER: FROM INTERSECTION OF I-84 UNDERPASS AT HERMAN CREEK EXIT GO WESTERLY ACROSS RAILROAD TRACKS ONTO QUARRY ROAD. CORNER IS APPROXIMATELY 600' BEYOND TRACKS ON THE NORTH SIDE OF THE ROAD DOWN A ROCK EMBANKMENT.

NAME: ERIK M. CARLSON
TITLE: TERRA SURVEYING

DATE: JULY 20, 2022
REGISTRATION NO. OR PLS 72306