

# LAND CORNER MONUMENT RECORD

INDEX FILE No. Z10 USDA-FOREST SERVICE

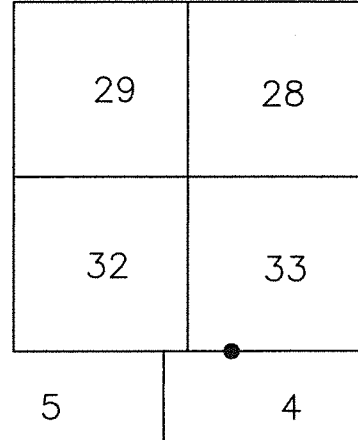
LOCATION

CC 1203

R. 9 E.

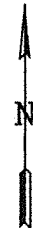
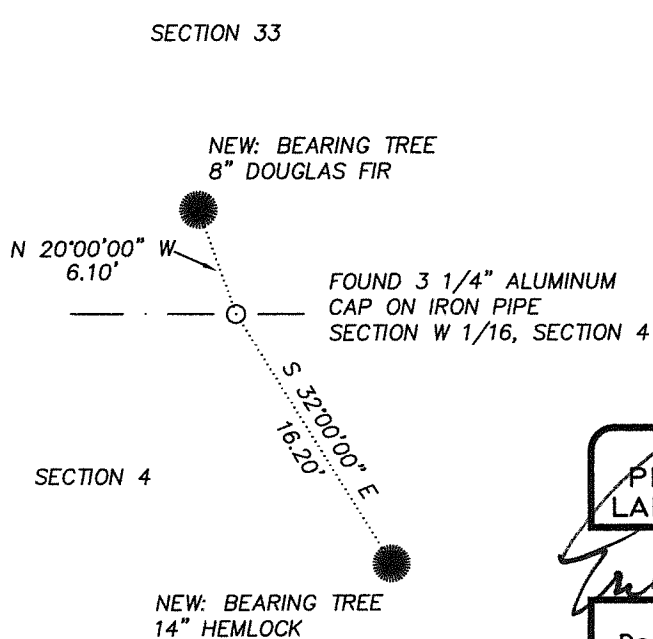
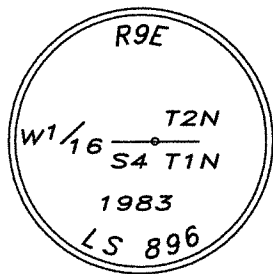
HOOD RIVER COUNTY  
STATE OF OREGON  
WILLAMETTE MERIDIAN

	6	5	4	3	2	1
	7	8	9	10	11	12
T.	18	17	16	15	14	13
1	19	20	21	22	23	24
N.	30	29	28	27	26	25
	31	32	33	34	35	36

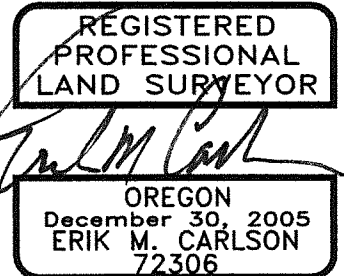


TOWNSHIP 1 NORTH      RANGE 9 EAST      SECTION 4, 1/16 CORNER

TYPE OF MONUMENT; TIES TO BEARING TREES, OBJECTS, etc. (SKETCH)



BASIS OF BEARING:  
COMPASS DECLINATION



FOUND WEST 1/16 CORNER SECTION 4  
FOUND A 3 1/4" ALUMINUM CAP  
UPDATED CORNER NOTES:

From which  
A 14" Hemlock (new BT) bears South 32' East a distance of 16.2' feet from Corner. BT was blazed and painted with red band. Set washer and nail L.S. 72306  
A 8" D.Fir (new BT) bears North 20' West a distance of 6.1' feet from Corner. BT was blazed and painted with red band. Set washer and nail L.S. 72306

REMARKS: ( History of Corner, etc. )

10/1983 - ORIGINALLY SET A 2" IRON PIPE. (C.S.83079)

DIRECTIONS TO CORNER: FROM INTERSECTION OF NF ROAD No. 2810 AND PUNCH BOWL ROAD TRAVEL WESTERLY ON 2810 APPROXIMATELY 7 MILES TO AN EVIDENT LOGGING CLEAR CUT LINE. CORNER IS APPROXIMATELY 600' NORTH OF ROAD, HEAD DUE NORTH AT THE SHARP TURN AND FOLLOW POSTED FOREST BOUNDARY SIGNS TO THE EAST TO GRADE BREAK.

NAME: ERIK M. CARLSON

DATE: DECEMBER 1, 2021

TITLE: TERRA SURVEYING

REGISTRATION NO. OR PLS 72306