

1200

OREGON CORNER RESTORATION FORM

Section 6 Township 1 N Range 9 E

County Hood River Date September 13, 2013

CORNER DESIGNATION

South 1/16 Corner Section 6, T1N, R9E

South 1/16 Corner Section 1, T1N, R8E

- Condition Report Only
- Not Found
- Renewed
- Unrecorded
- Surveyed In
- Referenced Out

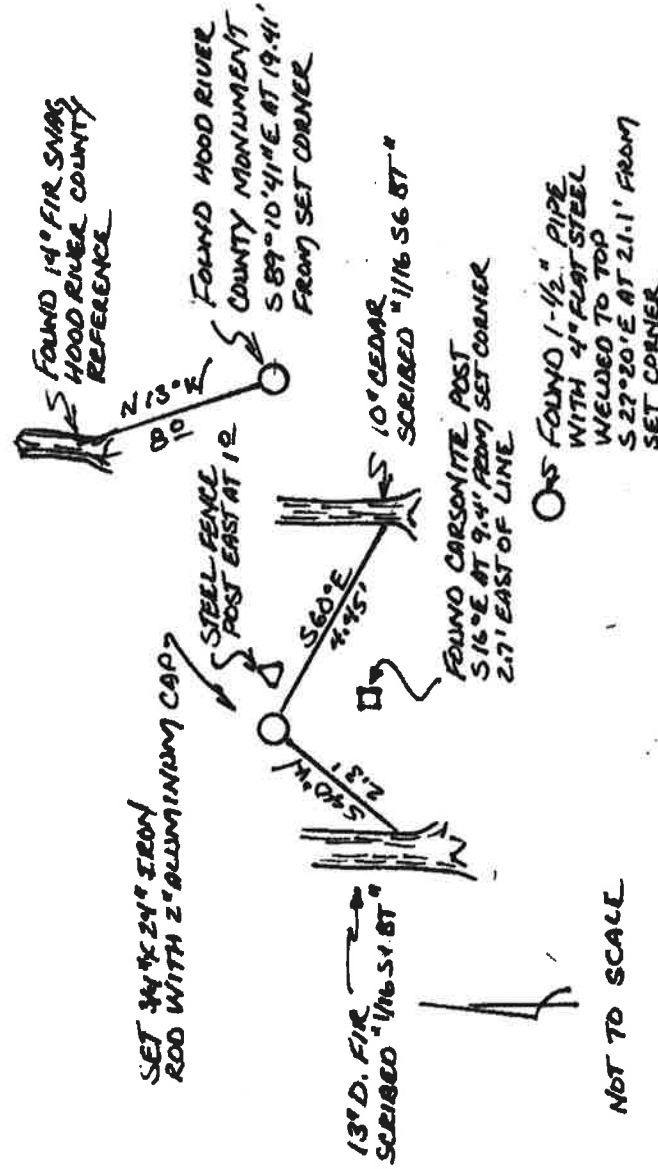
Previous Renewals/Surveys, etc. Corner was established by Hood River County in survey CS-1242, dated 1971, Hood River County monument not accepted

Monument(s) & Accessories Found: (Condition and Source)

Found 2-1/2" Pipe with 3-1/4" brass cap, found 14" D. Fir snag with Hood River City tag dated July "71", Found 1-1/2" pipe origin unknown

Monument Detail

Sketch



Monument Set (procedures and Description)

Set 3/4" x 24" Iron Rod with 2" Aluminum cap at midpoint between found section corner to south and found 1/4 corner to north

New Accessories

Referenced 13" D. Fir S40°W at 2.3' scribed [1/16 S1 BT: 10" Cedar S60°E at 4.45' scribed [1/16 S6 BT]: steel fence post east at 1.0'

Location & Comments
No comments

Compass Declination 16°E

Firm/Agency:
Ford Land Surveying
PO Box 353
Klickitat, WA 98628
Party Chief: George Ford
Notes: Field Book - 2013-4
Witness: Beverly Ford

Surveyor's Seal



George J. Ford
Nov 12, 2013
OREGON
JULY 17, 1968
GEORGE J. FORD
#2210

0-0 12/31/13

RECEIVED NOV 13 2013