

HOOD RIVER COUNTY RESTORATION FORM

Section: 5 Township: 1S Range: 9E DATE: 3/5/2012

CORNER DESIGNATION
WEST QUARTER CORNER

---	Condition Report Only
---	Not Found
---	Renewed
---	Unrecorded
---	Surveyed In
-X-	Referenced Out

Previous Renewals/Surveys, etc. IN MAY OF 1940 PUBLIC LAND SURVEYOR LEONARD CARTER UNDER GROUP #194 COMMENCED A SURVEY OF THE SOUTH AND WEST BOUNDARIES AND A PORTION OF THE SUBDIVISIONAL LINES COMPLETING THE TOWNSHIP 1 SOUTH RANGE 9 EAST

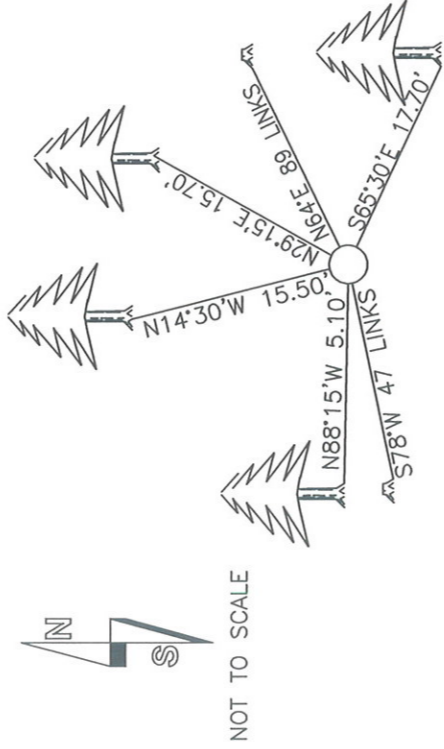
Monument(s) & Accessories Found: (Condition and Source)

FOUND AND HELD 2.5" GLO BRASS CAP STAMPED AS SHOWN EXPOSED 0.4' AS DESCRIBED IN THE GLO FIELD NOTES.
EXISTING REFERENCES:
(OBT) BADLY DECAYED FIR STUMP N 64° E 89 LINKS, NO MARKS VISIBLE, UNABLE TO ATTACH TAG
(OBT) BADLY DECAYED FIR STUMP S 78° W 47 LINKS, NO MARKS VISIBLE, UNABLE TO ATTACH TAG

Monument Detail



Sketch



Monument Set (Procedures and Description)

NO NEW MONUMENT SET

New Accessories

NEW ACCESSORIES WERE TIED FROM CONTROL TRAVERSE AND BEARING ARE REPORTED TO THE NEAREST DEGREE DISTANCES WERE MEASURED TO A SPIKE AT SIDE CENTER WITH A STEEL BUCKERS TAPE

NEW REFERENCES:

- 13" PACIFIC SILVER FIR SCRIBED "1/4 S5 RP" N 29°15' E 15.70' SIDE CENTER
- 10" PACIFIC SILVER FIR SCRIBED "1/4 S5 RP" S 65°30' E 17.70' SIDE CENTER
- 14" PACIFIC SILVER FIR SCRIBED "1/4 S6 RP" N 88°15' W 5.10' SIDE CENTER
- 12" PACIFIC SILVER FIR SCRIBED "1/4 S6 RP" N 14°30' W 15.50' SIDE CENTER

Location & Comments

ABOUT A HALF MILE NORTH WESTERLY FROM NF RD 1600 JUNCTION WITH THE 1600670 ROAD AND APPROXIMATELY 600 FEET SOUTH OF NF RD 1600 AT LINE CROSSING

Compass Declination 18° EAST

Firm/Agency LONGVIEW TIMBER CORP.

Address 10 INTERNATIONAL WAY
LONGVIEW, WA 98632

Party Chief JASON L SIMES

Notes JASON L SIMES

Witness ED BROWN

Surveyors Seal

REGISTERED
PROFESSIONAL
LAND SURVEYOR

Jason L Simes 3-7-2012

OREGON
NOVEMBER 10, 2009
JASON L. SIMES
83256PLS

Expires 6-30-2012