

SECTION OR SUBDIVISION

1/4 cor $\frac{8}{17}$

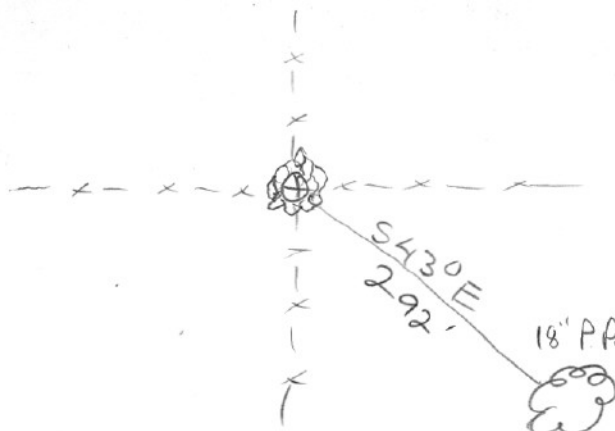
CORNER No.

1149

TWP. 2N, RANGE 11E, W.M.

CORNER DESCRIPTION

set 1 1/2" I.P. w/
 brass cap at fence inter
 section. Placed Coit
 stone on west side of
 pipe. "1/4" marked on
 W. side stone. Made
 Mound of stone
 around monument.
 Cor. is approx 300'
 west of dirt road that
 runs N&S along top
 of ridge.



W.O. REF.

CS # 92022

Bk 92-1 p. 9

CARD

OF

Mar. 1992