

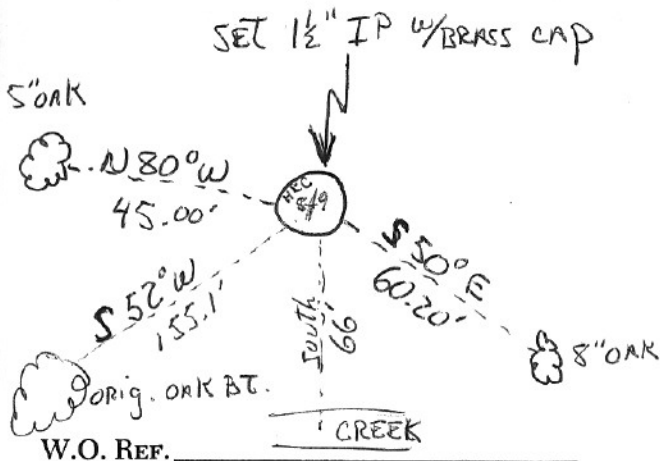
SECTION OR SUBDIVISION

8 | 9 1/4 COR.

CORNER No. 1071

TWP. 2 N, RANGE 11 E, W.M.

CORNER DESCRIPTION



Found ORIG OAK BT S52°W
 155.1' and CREEK CALL TO THE
 SOUTH FITS WITHIN 1'. SET 1 1/2" IP
 w/ BRASS CAP FROM WHICH 5" OAK
 BEARS N80°W 45.00' AND AN
 8" OAK BEARS S50°E 60.20'
 BOTH NEW BT'S ARE SCRIBED +
 TAGGED (1/4 S + BT)

Field notes in COTA Corner

Book # 2

CORNER IS APPRO. 150' EAST OF Old Dallas Rd CARD OF