

LAND CORNER MONUMENT RECORD

INDEX FILE No. **A7** USDA--FOREST SERVICE

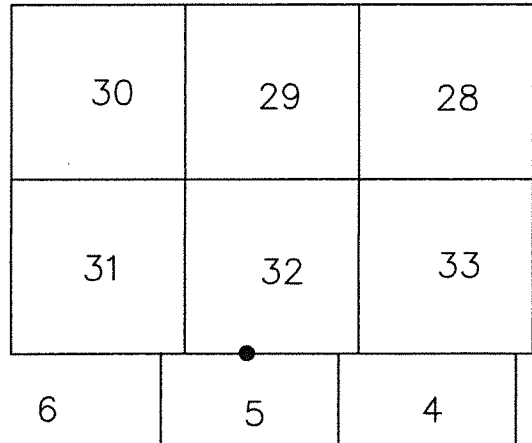
LOCATION

CC 1068

R. 9 E.

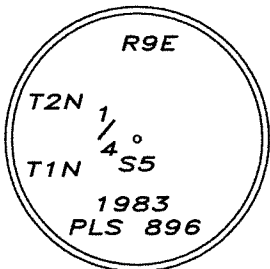
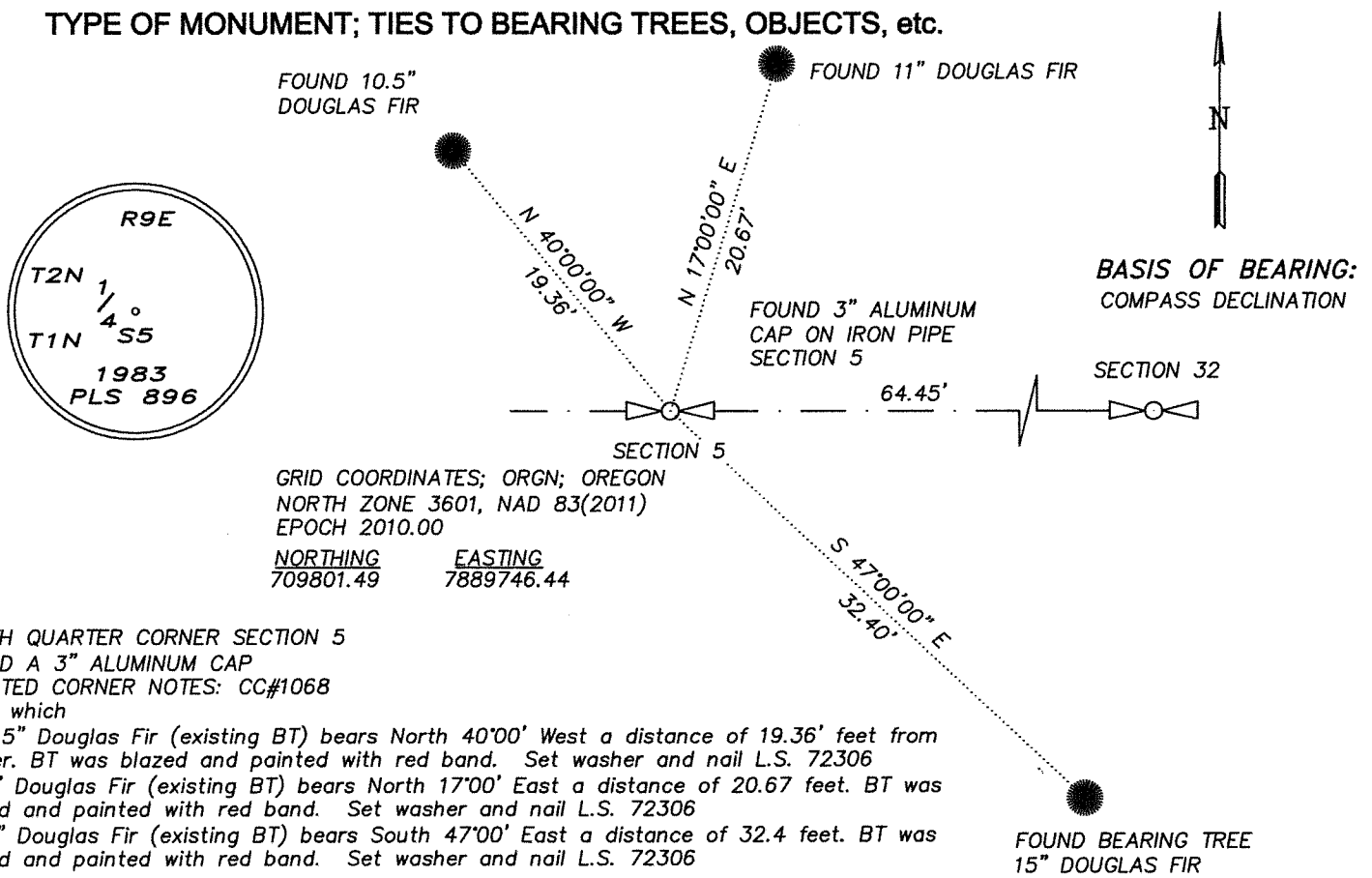
HOOD RIVER COUNTY
STATE OF OREGON
WILLAMETTE MERIDIAN

	6	5	4	3	2	1
	7	8	9	10	11	12
T. 2 N.	18	17	16	15	14	13
	19	20	21	22	23	24
	30	29	28	27	26	25
	31	32	33	34	35	36
T. 1 N.						
	6	5				



T. 2 N. T. 1 N. **RANGE 9 EAST** **NORTH 1/4 SECTION CORNER**

TYPE OF MONUMENT; TIES TO BEARING TREES, OBJECTS, etc.



GRID COORDINATES; ORGN; OREGON
NORTH ZONE 3601, NAD 83(2011)
EPOCH 2010.00
NORTHING 709801.49 EASTING 7889746.44

NORTH QUARTER CORNER SECTION 5
FOUND A 3" ALUMINUM CAP
UPDATED CORNER NOTES: CC#1068
From which
A 10.5" Douglas Fir (existing BT) bears North 40'00" West a distance of 19.36' feet from Corner. BT was blazed and painted with red band. Set washer and nail L.S. 72306
A 11" Douglas Fir (existing BT) bears North 17'00" East a distance of 20.67 feet. BT was blazed and painted with red band. Set washer and nail L.S. 72306
A 15" Douglas Fir (existing BT) bears South 47'00" East a distance of 32.4 feet. BT was blazed and painted with red band. Set washer and nail L.S. 72306

REMARKS: (History of Corner, etc.)

- 11/1983 - CORNER WAS ESTABLISHED BY LARRY BISHOP, (C.S.83078) CORNER CARD #1068
8" WHITE FIR CORNER BEARS S3°W-4.6' SCRIBED 1/4 S5 BT
12" D.FIR CORNER BEARS S42°E-32.4' SCRIBED 1/4 S5 BT
- 12/2015 - CORNER WAS VISITED AND TIED (C.S.2016-001)
RECOVERED BTS:
10" FIR WITH TAG AND SCRIBE, BEARS S04°W-4.8'
16" FIR WITH TAG AND SCRIBE, BEARS S44°E-32.6'
- ESTABLISHED BTS:
9" FIR N40°W-19.36' WITH 60D FOUND IN SIDE CENTER
10" FIR N17°E-20.67' WITH 60D FOUND IN SIDE CENTER
- 6/2020 - CORNER WAS VISITED AND TIED (C.S.2020-033)
RECOVERED BTS:
12" FIR- N17°E-20.67'
16" FIR- S44°E-32.60'
11" FIR- N40°W-19.36'

**REGISTERED
PROFESSIONAL
LAND SURVEYOR**

Erik M. Carlson

OREGON
December 30, 2005
ERIK M. CARLSON
72306

Expires: December 31, 2023

DIRECTIONS TO CORNER: FROM INTERSECTION OF NF ROAD No. 2810 AND PUNCH BOWL ROAD TRAVEL WESTERLY ON 2810 APPROXIMATELY 7 MILES TO AN EVIDENT LOGGING CLEAR CUT LINE. CORNER IS APPROXIMATELY 600' NORTH OF ROAD, HEAD WEST ALONG NORTH SIDE OF CLEAR CUT TO A OLD OVERGROWN LOGGING ROAD HEADING NORTHWESTERLY, CORNER IS APPROXIMATELY 100 FEET EASTERLY, FOLLOW LINE POSTS EAST.

NAME: ERIK M. CARLSON
TITLE: TERRA SURVEYING

DATE: DECEMBER 1, 2021
REGISTRATION NO. OR PLS 72306

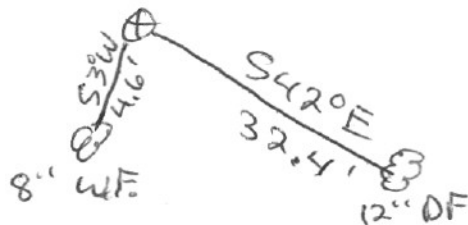
SECTION OR SUBDIVISION $N\frac{1}{4}$ cor sec 5

CORNER No. 1068

TWP. 1N, RANGE 9E, W.M.

CORNER DESCRIPTION

Alum cap
pipe & cap
set by Larry
Bishop in 1983
by single prop.



W.O. REF. _____

Dwg. # 83078

CARD..... OF