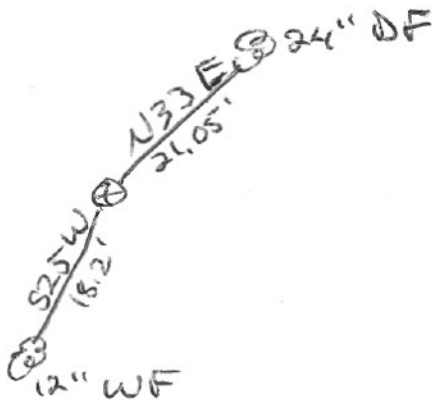


SECTION OR SUBDIVISION  $\frac{1}{4}$  COR 32/33

TWP..... 15, RANGE..... 10 E, W.M.



W.O. REF. \_\_\_\_\_

CORNER No. 1039

CORNER DESCRIPTION

~~2 1/2" ID w/brass  
cap. set by  
Bishop 1979~~

see CS# 79104

cor is 3" Brass Cap  
set in 36" x 36"  
rock.

set by Bishop  
1979

CARD..... OF .....