

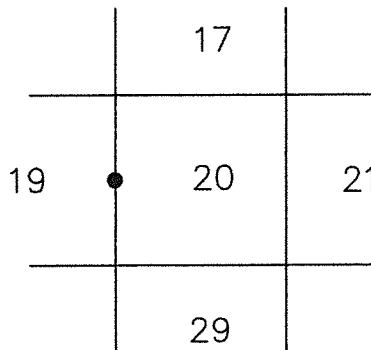
LAND CORNER MONUMENT RECORD

LOCATION

LC 1007

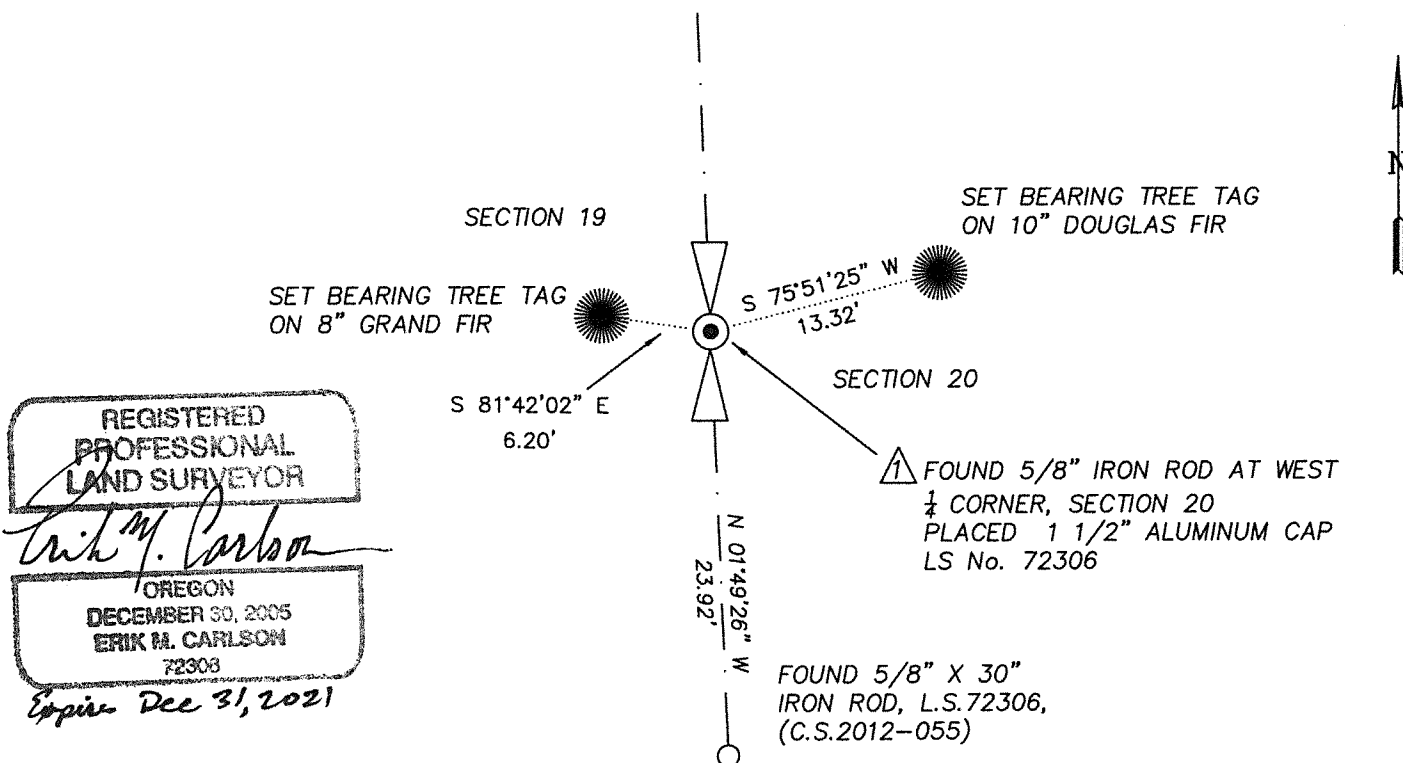
R. 10 E.

T. 2 N.	6	5	4	3	2	1
	7	8	9	10	11	12
	18	17	16	15	14	13
	19	● 20	21	22	23	24
	30	29	28	27	26	25
	31	32	33	34	35	36



TOWNSHIP 2 NORTH RANGE 10 EAST SECTION 20 W 1/4 CORNER

TYPE OF MONUMENT; TIES TO BEARING TREES, OBJECTS, etc. (SKETCH)



REGISTERED
PROFESSIONAL
LAND SURVEYOR

Erik M. Carlson

OREGON
DECEMBER 30, 2005
ERIK M. CARLSON
72308

Expires Dec 31, 2021

REMARKS: (History of Corner, etc.)

- 8/8/1977 – SET 5/8" IRON ROD, C.S 77073 BY CRON PER J.L.H. C.S. 0442
 - 1979 – FOUND "WEST 1/4 CORNER", C.S 79047 BY BISHOP
 - 10/30/1990 – FOUND 5/8" IRON ROD, C.S 90093 BY CRON
- LAND CORNER CARD 1007

DIRECTIONS TO CORNER: FROM INTERSECTION OF KINGSLEY ROAD AND SKYLINE DRIVE, CONTINUE TRAVEL WESTERLY ON KINGSLEY APPROXIMATELY 1.4 MILES TO A COUNTY GATE ON THE SOUTH SIDE OF THE ROAD. ACCESS GATE AND TRAVEL EASTERLY ON COUNTY ROAD APPROXIMATELY .6 MILES TO A FORK. HEAD EAST OF FORK APPROXIMATELY .3 MILES TO WHERE COUNTY ROAD TURNS SOUTH. HEAD SOUTH APPROXIMATELY 600 FEET TO WHERE CORNER LIES APPROXIMATELY 60 FEET DOWNHILL OF COUNTY ROAD.

GRID COORDINATES; ORGN; OREGON NORTH ZONE, NAD 83, (CORS 96)

△	<u>NORTHING</u> 722260.76	<u>EASTING</u> 7919156.09
---	------------------------------	------------------------------

NAME: ERIK M. CARLSON

DATE: MAY 20, 2021

TITLE: TERRA SURVEYING

REGISTRATION NO. OR PLS 72306

SECTION OR SUBDIVISION $\frac{1}{4}$ cor 19/20

TWP. 2N, RANGE 10E, W.M.

CORNER No. 1007

CORNER DESCRIPTION

cor. is $5/8$ " IR
cut by DLC 1927
from JLH BT.

W.O. REF. _____

CARD..... OF