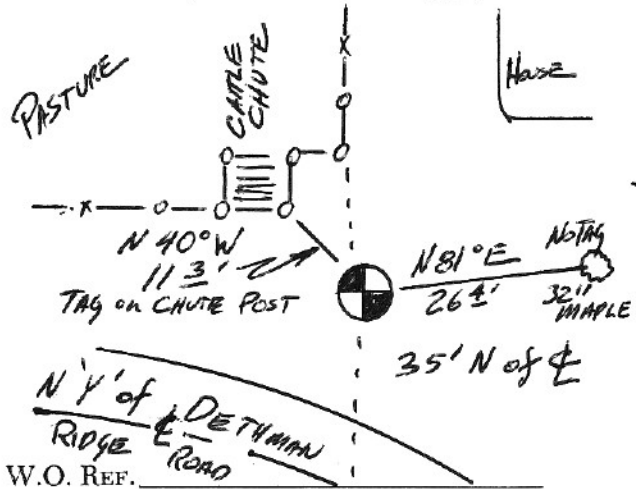


SECTION OR SUBDIVISION 1/4 COR 22 & 23

CORNER No. 1004

TWP. 2N, RANGE 10E, W.M.

CORNER DESCRIPTION



7/89

FD = 1 1/4" IP OVER 3/4" IP

W/ LG STONE BURIED ALONGSIDE

SET = BRASS CAP IN CONCRETE

IN MON BOX APPROXIMATELY

200' E of HWY 282

(OVER)

CARD 1 OF 1

