

SECTION OR SUBDIVISION

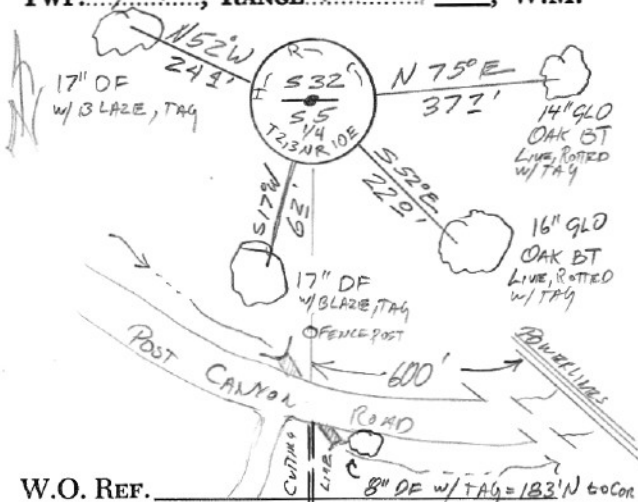
1/4 S32/S5

CORNER No.

998

TWP. 2, 3 N, RANGE 10 E, W.M.

CORNER DESCRIPTION



W.O. REF.

CS BT 1-90, pg 31, 5/90

FO: 3/4" IP & BTs Found by BISHOP in

1978. BTs' FIT CALLS.

SETS 2" I.P. OVER 3/4" I.P.; SET B.C.

IN CONCRETE; TAGGED OLD BTs' &

SET 2 NEW BTs, BLAZED,

SCRIBED & TAGGED

CARD

OF

Cor#998 ¼ cor 32/5 3N/2N 10E

HRC set 2" IP w/brass cap in 1990. Two glo bt's still standing.