

SECTION OR SUBDIVISION

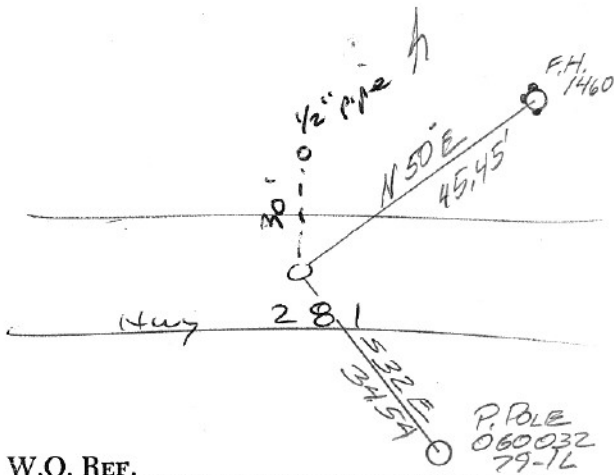
$\frac{2}{11}$  1/4 COR

CORNER No.

996

TWP. 2N., RANGE 10, W.M.

CORNER DESCRIPTION



W.O. REF.

Brass cap in  
Mon. Case

5/13/91 FD: PAVEMENT FILLED  
HOLE w/ STRADDLES PRIOR  
to PAVING.

Fd 1/2" pipe 30'  
N. of corner as  
per MK BK 6  
p. 81-82. RSA 1991

CARD OF

Cor#996 1/4cor between secs 2 and 11 2N10E

MK found orig oak stake in 1913 and replaced with 1/2" pipe. He also set 1/2" pipes at 30 feet north and 25 feet south of corner. HRC monumented the corner pipe during the 1970's and set a brass cap in monument case. The pipe 30 feet north is still there.