

# LAND CORNER MONUMENT RECORD

INDEX FILE No. P-13 *USDA-FOREST SERVICE*

LOCATION

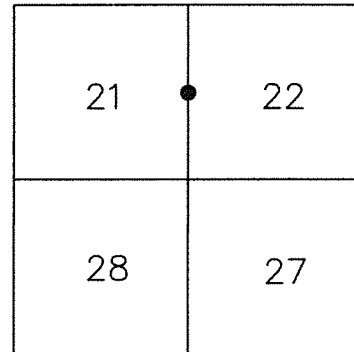
CC 972

HOOD RIVER COUNTY  
STATE OF OREGON  
WILLAMETTE MERIDIAN

R. 9 E.

T.  
2  
N.

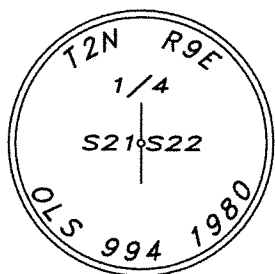
	6	5	4	3	2	1
	7	8	9	10	11	12
	18	17	16	15	14	13
	19	20	21	● 22	23	24
	30	29	28	27	26	25
	31	32	33	34	35	36



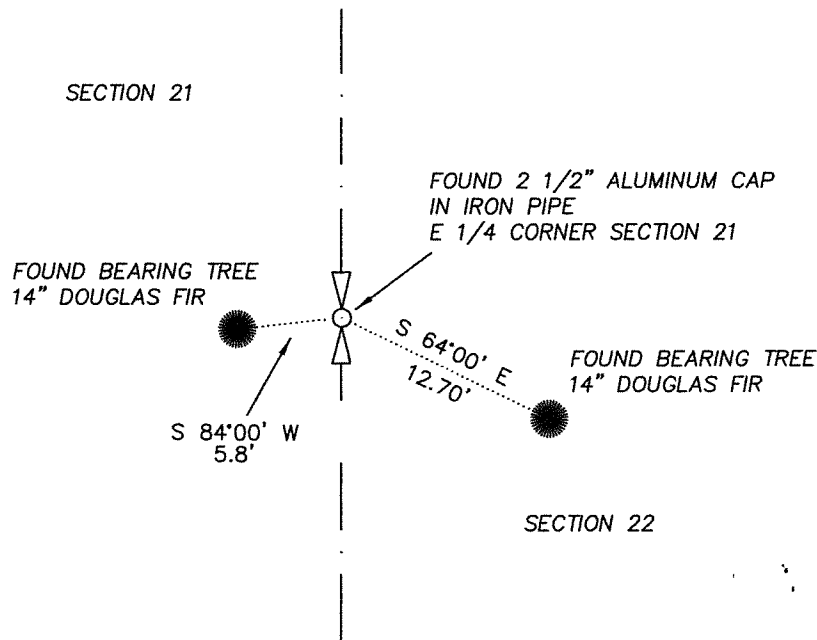
TOWNSHIP 2 NORTH      RANGE 9 EAST      SECTION 21 E 1/4 CORNER

TYPE OF MONUMENT; TIES TO BEARING TREES, OBJECTS, etc.

(SKETCH)



**BASIS OF BEARING:**  
COMPASS DECLINATION



REGISTERED  
PROFESSIONAL  
LAND SURVEYOR

*Erik M. Carlson*  
OREGON  
December 30, 2005  
ERIK M. CARLSON  
72306

Expires: December 31, 2023

FOUND QUARTER CORNER COMMON TO SECTION 21/22

FOUND A 1/2" ALUMINUM CAP ON IRON PIPE.

UPDATED CORNER NOTES:

From which

A 14" D.Fir (existing BT) bears South 84°00' West a distance of 5.8' feet from Corner. Existing BT was painted with red band. Existing blaze was painted red.

A 14" D.Fir (existing BT) bears South 64°00' East a distance of 12.7' feet from Corner. Existing BT was painted with red band. Existing blaze was painted red.

REMARKS: ( History of Corner, etc. )

6/1980 - SET 3 1/4" ALUMINUM CAP ON 2 1/2" PIPE, 30" LONG, 24" IN GROUND AND MOUND OF STONE BY LAWRENCE E. JONES, LS 994.

DIRECTIONS TO CORNER: FROM INTERSECTION OF KINGSLEY ROAD AND LARCH MOUNTAIN ROAD, CONTINUE TRAVEL SOUTH WESTERLY ON LARCH MOUNTAIN APPROXIMATELY 1.1 MILES. TRAVEL 500 FEET NORTH OF LARCH MOUNTAIN ROAD TO THE CORNER OF EVIDENT LOGGING CUT LINE. CONTINUE NORTH ALONG SAID CUTLINE APPROXIMATELY 0.5 MILES, FOLLOWING POSTED FOREST BOUNDARY SIGNS TO CORNER.

NAME: ERIK M. CARLSON

DATE: DECEMBER 1, 2021

TITLE: TERRA SURVEYING

REGISTRATION NO. OR PLS 72306

SECTION OR SUBDIVISION

21/22 1/4 cor

CORNER No.

972

TWP. 2N, RANGE 9E, W.M.

CORNER DESCRIPTION

set by proportion  
in 1980 by TEC

CORNER RECORD (PERPETUATION)

P-13

MONUMENT. DESCRIBE NEW MONUMENT SET, OR WORK DONE TO PRESERVE EXISTING MONUMENT

Set aluminum cap on a 2-1/2 inch aluminum pipe, 30 inches long, 24 inches in the ground and built a mound of stone.



ACCESSORIES DESCRIBE NEW BT WITNESS OBJECTS ETC. ESTABLISHED, OR WORK DONE TO PRESERVE EXISTING EVIDENCE

A fir 9" in diameter bears S. 64° E., 12.7 ft. dist., marked 1/4 S22 (BT)  
A fir 6" in diameter bears S. 84° W., 5.8 ft. dist., marked 1/4 S21 (BT)

W

Work Done By Lawrence E. Jones title Surveyor Date 10/80 State Registration No. L.S. 994

Certified Cor Record Prepared? Yes No Filed At: Date

REMARKS

CARD OF

Index File No. P-13

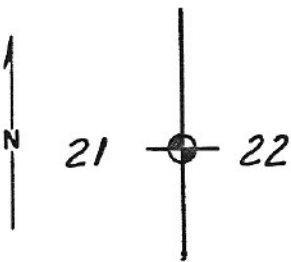
**CORNER RECORD (SEARCH)**  
(Ref. FSM 7151.4)

CC0972 1/4 Cor.  
Tract or Survey No. CS81-097 Cor. Sec 21-22 No. \_\_\_\_\_

T 2 N. R. 9 E. R.D. Hood River County Hood River

Merid. Willamette N.F. Mt. Hood State Oregon

CORNER DIAGRAM



DESCRIBE CORNER MONUMENT FOUND

None: Corner location established by proportionment.

DESCRIBE BEARING TREES OR OTHER OFFICIAL ACCESSORIES FOUND

None.

PHOTO IDENTIFICATION DATA

Photo No. \_\_\_\_\_  
Filed At. \_\_\_\_\_  
Object Ident. \_\_\_\_\_  
Ident. By \_\_\_\_\_  
*Signature*

DESCRIBE CORNER LOCATION RELATIVE TO NEAR-BY FEATURES, ALSO HOW TO REACH CORNER

From junction of roads N-20 and N-21 go n.e. on N-21 - 1.9 mi. marked dead end. Go north on dead end road 150 ft., more or less to fork. Take right fork 0.2 mi., more or less to a brushed line to south. Follow brushed line 0.25 mi, more or less to corner.

PLANE COORDINATE POSITION DATA

State Oregon Zone North  
X 722,288.16  
Y 1,696,124.83  
Estab. By TEC  
*Agency*

Signature \_\_\_\_\_ Title \_\_\_\_\_ Division \_\_\_\_\_ Headquarters \_\_\_\_\_ Date \_\_\_\_\_ 7100-52 (3.68)

*Lawrence E. Jones* Surveyor \_\_\_\_\_ Date October, 1980

**CORNER RECORD (PERPETUATION)**

P-13

MONUMENT: DESCRIBE NEW MONUMENT SET, OR WORK DONE TO PRESERVE EXISTING MONUMENT

Set aluminum cap on a 2-1/2 inch aluminum pipe, 30 inches long, 24 inches in the ground and built a mound of stone.



ACCESSORIES: DESCRIBE NEW BT'S WITNESS OBJECTS ETC. ESTABLISHED, OR WORK DONE TO PRESERVE EXISTING EVIDENCE

A fir 9" in diameter bears S. 64° E., 12.7 ft. dist., marked 1/4 S22 (BT)  
A fir 6" in diameter bears S. 84° W., 5.8 ft. dist., marked 1/4 S21 (BT)

Work Done By Lawrence E. Jones Title Surveyor Date 10/80 State Registration No. L.S. 994  
or Agency \_\_\_\_\_

Certified Cor. Record Prepared? Yes No Filed At: \_\_\_\_\_ Date \_\_\_\_\_

REMARKS