

SECTION OR SUBDIVISION

CS 1/16 sec 26

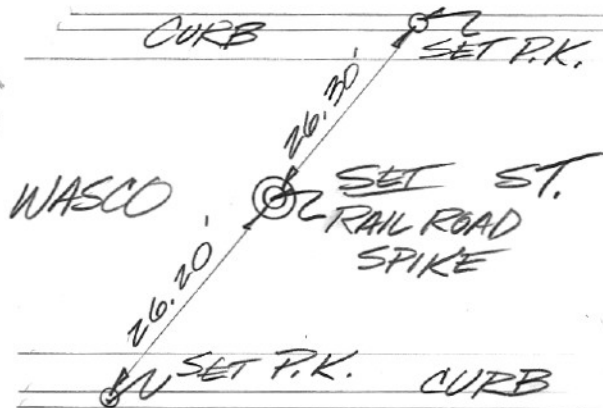
CORNER No.

964

TWP. 3N, RANGE 10 E, W.M.

CORNER DESCRIPTION

↑
Z



CORNER 15A
 RAIL ROAD SPIKE
 P.K. NAIL 26.30
 P.K. NAIL 26.20

RR spike is on
 line between 2
 P.k. nails

W.O. REF.

Over →

CARD

OF

This cor. was destroyed by
Wasco. St. construction in 1983.
HRC. reset it in Sept. 1984.

~~RJA~~

964