

SECTION OR SUBDIVISION

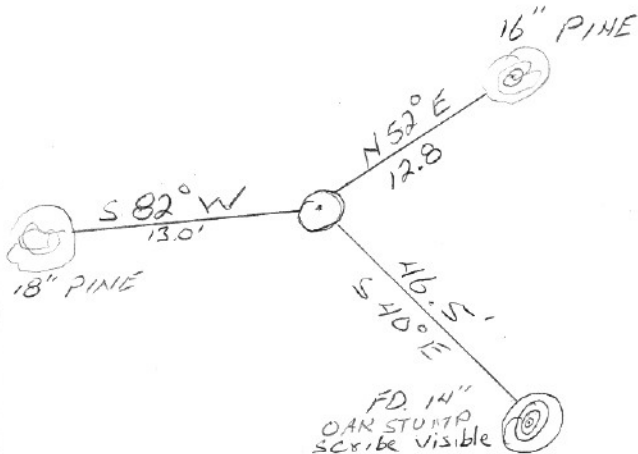
W 1/4 Sec. 12

CORNER No.

910

TWP. 2 N., RANGE R10 E., W.M.

CORNER DESCRIPTION



TAGED TWO NEW
B.T.S. & OLD B.T.
SCRIBED NEW TREES
AT CORNER, FOUND &
REPLACED I. PIPE - 2"
& LED PIPE WITH
1 1/2" I. PIPE & BRASS CAP
12/20/81

W.O. REF.

BOOK "B.T.S." 81

CARD

OF

Cor#910 ¼ cor 11/12 2N10E

HRC found IP and orig bt in 1981. Replaced pipe with 1 ½" pipe and cap. Tagged two new bt's.