

SECTION OR SUBDIVISION

W¹/₄ SEC 33

CORNER No.

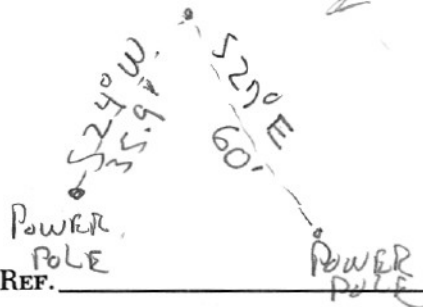
908

TWP. 1N, RANGE 10E, W.M.

CORNER DESCRIPTION

32 | 33

BRASS cap in Roadway
From which a power
pole bears S 24° W
35.9' and a power pole
bears S 27° E 60'.



W.O. REF.

visited 7/15/88 Ed. Z.P.A. 1/25

1-S 20° W 35.4'

1-S 30° E 60.3'

AK. 1-88 pg. 115

CARD OF