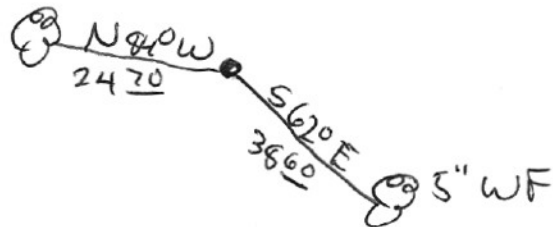


SECTION OR SUBDIVISION $\frac{1}{4}$ cor 24/19

TWP. 12, RANGE 9 & 10 E, W.M.

13" WF



W.O. REF. _____

CORNER No. 899

CORNER DESCRIPTION

set 1 1/2" IP
w/brass cap. Replaced
Henderson 2" IP
which had been
destroyed
Tagged two
RT'S.

CARD _____ OF _____