

SECTION OR SUBDIVISION N.E. COR. SEC 30

TWP. 1 N., RANGE 9 E, W.M.

SECTION 30

CORNER No. 891

CORNER DESCRIPTION

FD. 1" IRON
PIPE & ORIG.
G.L.O. BT AS
PER RECORD

W.O. REF. _____

CARD 1 OF 1

OREGON CORNER RESTORATION FORM

Section 30 Township 1 N Range 9 E

County Hood River Date October 27, 2011

CORNER DESIGNATION

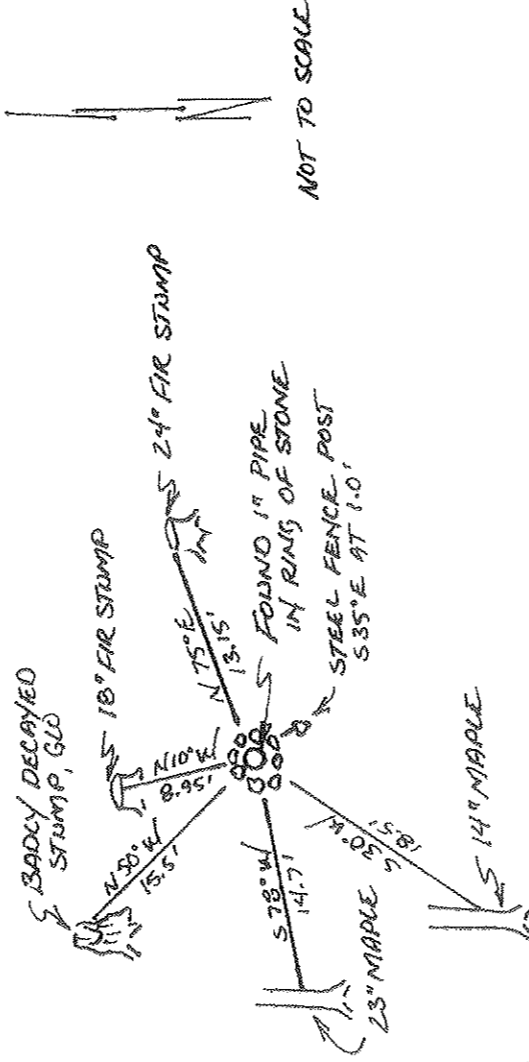
- ___ Northeast Corner Section 30, T1N, R9E
- ___ Southeast Corner Section 19, T1N, R9E
- ___ Northwest Corner Section 29, T1N, R9E
- ___ Southwest Corner Section 20, T1N, R9E

- ___ Condition Report Only
- ___ Not Found
- ___ Renewed
- ___ Unrecorded
- ___ Surveyed In
- x Referenced Out

Previous Renewals/Surveys, etc. Corner established by Newton Clark, GLO No. 502, accepted December 24, 1884. Corner card 891 notes, "Found 1" pipe and original GLO BT."
Hood River County Survey Dept. in survey dated 2-5-81, CS-81006 notes found 1" iron pipe and original BT as per record.

Monument(s) & Accessories Found: (Condition and Source)
Found 1" iron pipe in ring of stones, badly decayed stump N50°W at 15.5' (GLO notes 10" Fir N50°W at 23 lks.)

Monument Detail



Monument Set (procedures and Description)

N/A

New Accessories

23" Maple S78°W at 14.7' (scribed: T1N R9E S30 BT); 14" Maple S30°W at 18.5' (scribed: T1N R9E S30 BT); 24" Fir stump N75°E at 13.15', no scribe. 6" spike in top of stump; 18" Fir stump N10°W at 8.95', not scribed, 6" spike in top of stump; Steel fence post S35°E at 1.0'. New accessories have location tag above scribe and 6" spike at base of scribe; all oriented toward monument unless noted otherwise. Bearings taken with hand compass having declination of 16° East.

Location & Comments
No comments

Compass Declination: 16°E
Firm/Agency:
Ford Land Surveying
PO Box 353
Klickitat, WA 98628
Party Chief: George Ford
Notes: Field Book - 2011-4
Witness: Brett Crooks

Surveyor's Seal

