

SECTION OR SUBDIVISION

17 | 16  
20 | 21

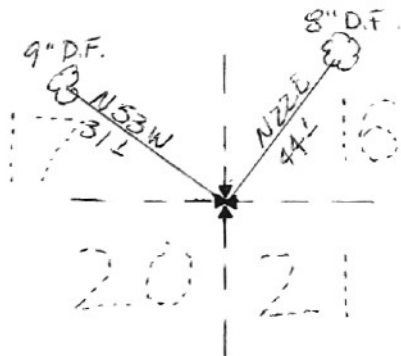
TWP. 2N, RANGE 9 E, W.M.

CORNER No. 877

CORNER DESCRIPTION

BC. W 2 1/2" I.P. W1 MD  
OF STONES  
SET BY TEC 6/80

FD 3 ORG BT'S. COR  
SET BY DIS. FRM B.T.'S



W.O. REF. \_\_\_\_\_

CARD \_\_\_\_\_ OF \_\_\_\_\_

Index

File No. N-9

CORNER RECORD (SEARCH)

(Ref. FSM 7151.4)

Tract or

Survey No. CS81-097

Cor. Sections

No. 16-17-20-21

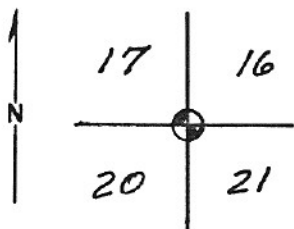
T 2 N. R. 9 E.

R.D. Hood River County Hood River

Merid. Willamette

N.F. Mt. Hood State Oregon

CORNER DIAGRAM



DESCRIBE CORNER MONUMENT FOUND

None

DESCRIBE BEARING TREES OR OTHER OFFICIAL ACCESSORIES FOUND

Three original GLO bearing trees found: A fir 24" dia. bears N. 30° E. 36 lks to face; a fir 24" dia. bears S 70° E. 52 lks to face; a fir 23" dia bears S 41° W. 38 lks to face. Scribe on bearing tree in NE opened to verify corner.

PHOTO IDENTIFICATION DATA

Photo No. \_\_\_\_\_

Filed At. \_\_\_\_\_

Object Ident. \_\_\_\_\_

Ident. By \_\_\_\_\_

Signature

PLANE COORDINATE POSITION DATA

State \_\_\_\_\_ Zone \_\_\_\_\_

X \_\_\_\_\_

Y \_\_\_\_\_

Estab. By \_\_\_\_\_

Agency

Signature

Title  
Surveyor

Division

Headquarters

Date  
June, 1980 7100-52 (3.68)

*Lawrence Jones*

CORNER RECORD (PERPETUATION)

MONUMENT: DESCRIBE NEW MONUMENT SET, OR WORK DONE TO PRESERVE EXISTING MONUMENT

Set brass disc on 2-1/2" galvanized pipe, 30" long, 24" in the ground and built mound of stone. Corner location set by distance from bearing trees

T2N R9E

S17 | S16

S20 | S21

LS994 1980

ACCESSORIES: DESCRIBE NEW BT'S WITNESS OBJECTS ETC. ESTABLISHED, OR WORK DONE TO PRESERVE EXISTING EVIDENCE

A fir 8" diameter bears N. 22° E. 44.1 ft., marked T2N R9E S16 BT.

A fir 9" diameter bears N. 53° W. 31.1 ft., marked T2N R9E S17 BT.

Work Done By Lawrence E. Jones Title Survey

Date 6/80

State Registration No. LS 994

Certified Cor. Record Prepared? Yes

No

Filed At. \_\_\_\_\_

Date \_\_\_\_\_

REMARKS

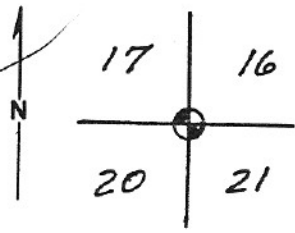
Index File No. N-9  
T 2 N. 9 E. R. 9 E.  
Merid. Willamette

CORNER RECORD (SEARCH)  
(Ref. FSM 7151.4)

Tract or Survey No. CS81-097 Cor. Sections No. 16-17-20-2

R.D. Hood River County Hood River  
N.F. Mt. Hood State Oregon

CORNER DIAGRAM



DESCRIBE CORNER MONUMENT FOUND

None

DESCRIBE BEARING TREES OR OTHER OFFICIAL ACCESSORIES FOUND

Three original GLO bearing trees found: A fir 24" dia. bears N. 30° E. 36 lks to face; a fir 24" dia. bears S 70° E. 52 lks to face; a fir 23" dia bears S 41° W. 38 lks to face. Scribe on bearing tree in NE opened to verify corner.

DESCRIBE CORNER LOCATION RELATIVE TO NEAR-BY FEATURES, ALSO HOW TO REACH CORNER

From junction of Rds. N-20 & N-21, go northeast on N-21, 2.5 mi. to fork, 0.2 mi. past end of gravel, take left fort through clear-cut 0.5 mi, more or less to end of road. Go northwest to flagged line then west 900' more or less to corner.

PHOTO IDENTIFICATION DATA

Photo No. \_\_\_\_\_  
Filed At. \_\_\_\_\_  
Object Ident. \_\_\_\_\_  
Ident. By \_\_\_\_\_  
Signature \_\_\_\_\_

PLANE COORDINATE POSITION DATA

State \_\_\_\_\_ Zone \_\_\_\_\_  
X \_\_\_\_\_  
Y \_\_\_\_\_  
Estab. By \_\_\_\_\_  
Agency \_\_\_\_\_

Signature Lawrence Jones

Title Surveyor Division \_\_\_\_\_ Headquarters \_\_\_\_\_

Date June, 1980 7100-52 (3. 68)

CORNER RECORD (PERPETUATION)

N-9

MONUMENT. DESCRIBE NEW MONUMENT SET, OR WORK DONE TO PRESERVE EXISTING MONUMENT

Set brass cisc on 2-1/2" galvanized pipe, 30" long, 24" in the ground and built mound of stone. Corner location set by distance from bearing trees

T2N R9E  
S17 | S16  
S20 | S21  
LS994 1980

ACCESSORIES DESCRIBE NEW BT'S WITNESS OBJECTS ETC. ESTABLISHED, OR WORK DONE TO PRESERVE EXISTING EVIDENCE

A fir 8" diameter bears N. 22°E. 44.1 ft.  
A fir 9" diameter bears N. 53° W. 31.1 ft.

Work Done By Lawrence E. Jones Title Survey Date 6/80 State Registration No. LS 994  
or Agency \_\_\_\_\_

Certified Cor. Record Prepared? Yes No Filed At: \_\_\_\_\_ Date \_\_\_\_\_

REMARKS