

SEC 17 CENTER EAST $\frac{1}{16}$ CORN.
SECTION OR SUBDIVISION

TWP. 1 N....., RANGE 10 E....., W.M.



2 oaks 7"

N 32° W
2'

N 86° W

2 1/2 chains

3 FIRS

S 10° W
2 chains

LARGE FIR
W.O. REF.

CORNER No. 799.....

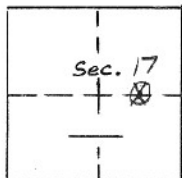
CORNER DESCRIPTION

2" Diam chopped ^{OAK} stake approx
3' high, square top, BRUSHED
LINE (OLD) FROM HERE TO EAST
1/4 CORNER

CARD..... 1..... OF .. 1.....

PROPERTY CORNER INVESTIGATION

LOCATION

T. 1N R. 10EMer. WM State ORForest HRC Dist. HRC

LEGEND

- Corner searched—no evidence
 ⊗ Corner or accessory found
 ● Corner marked by perm. mon.

DESCRIPTION OF FOUND CORNER

MATERIAL: WOOD ^{2" DIAM CHOPPED} SIZE: 3' HIGH SQUARED TOP
_{RIBBON TIED TO}
 HEIGHT ABOVE GROUND: FROM GROUND CONDITION: GOOD
 MARKINGS: SQUARED ^{UP TO 3'} CHOPPED TOP

DESCRIPTION OF FOUND ACCESSORIES

PIECE OF OAK WOOD 2" DIAM 3' LONG
STUCK IN GROUND WITH RED RIBBON
TIED TO TOP, OLD BRUSHED LINE FROM
THERE TO EAST 1/4 CORNER

NOTE: Indicate full investigative details on back of form.

PHOTO IDENTIFICATION

Symbol & date _____ Line or
Roll _____ Exposure _____

How Identified _____ Where filed _____

RECOVERED BY: _____

DATE: _____ TITLE: _____

LARGE FIR BEARING

S 10° W. APPROX. 2 CHAINS

3 LARGE FIRS ON RIDGE TOP

FARTHEST SOUTH ONE BEARING

N 86° W FROM CORNER

APPROX 2½ CN,

TWO OAKS 7" DIAM

BEARING N 32° W

FROM STAKE APPROX 8'

NOW HAVE PINK RIBBON

TIED TO THEM