

SECTION OR SUBDIVISION

TWP. 2N....., RANGE 11E....., W.M.

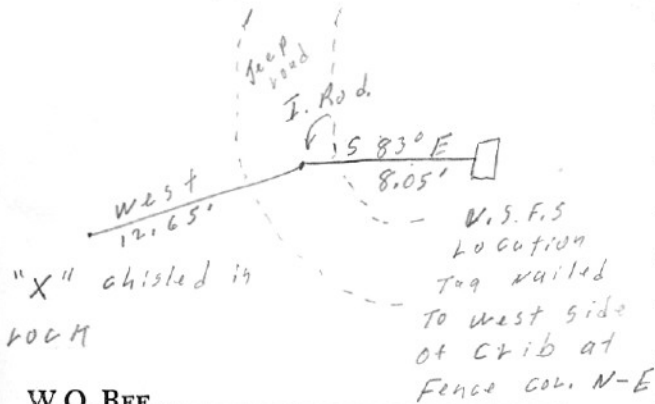
CORNER No. 759.....

5/4 cor. Sec. 17

CORNER DESCRIPTION

Set 5/8" I. Rod

Set by L. Bishop
L.S. # 896 - 1/27/77



"X" chisled in
rock

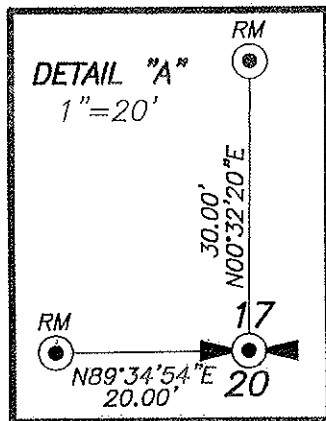
W.O. REF. _____

76 285 - DAI

CARD..... OF

SECTION OR SUBDIVISION

TWP. 2N, RANGE 11 E, W.M.



CORNER No. 759

1/4 17/20

CORNER DESCRIPTION

BISHOP IR NOT FD.
SP12 CS 2010 005
FOR RESET IR/PC
GUN BARREL ALSO
FD., 36' EAST ON $\frac{1}{4}$

W.O. REF.

CARD 2 OF 2