

LAND CORNER MONUMENT RECORD

INDEX FILE No. A17 *USDA-FOREST SERVICE*

LOCATION

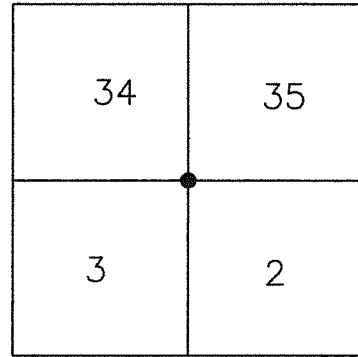
CC 758

HOOD RIVER COUNTY
STATE OF OREGON
WILLAMETTE MERIDIAN

R. 8 E.

T.
2
N.

				●		
	6	5	4	3	2	1
	7	8	9	10	11	12
	18	17	16	15	14	13
	19	20	21	22	23	24
	30	29	28	27	26	25
	31	32	33	34	35	36



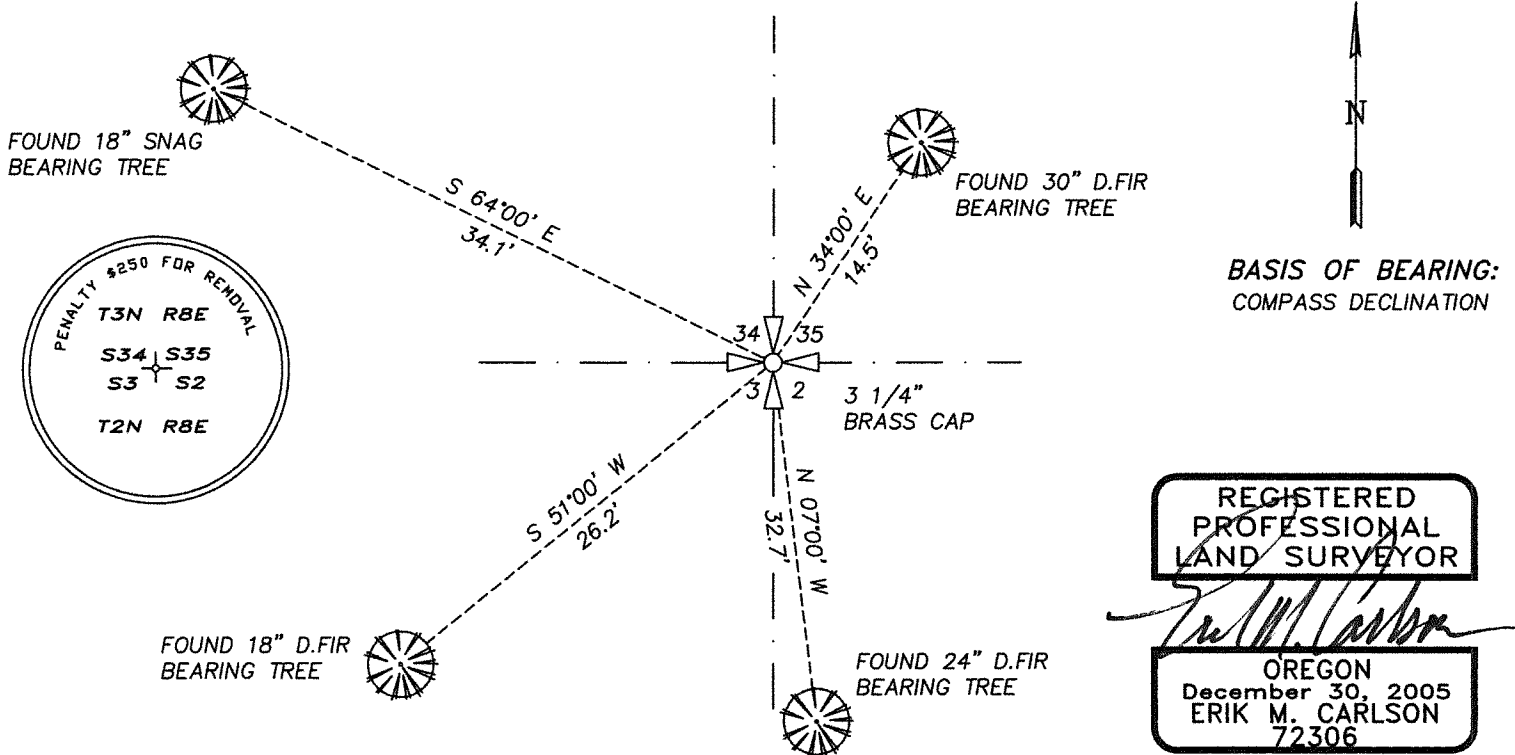
TOWNSHIP 2 NORTH

RANGE 8 EAST

SECTION CORNER 2/3/34/35

TYPE OF MONUMENT; TIES TO BEARING TREES, OBJECTS, etc.

(SKETCH)



Found 3 1/4" brass cap monumenting the Section corner (A-17) common to Section 34, 35, 2 and Section 3 of Township 2 North, Range 8 East.

Expires: December 31, 2023

Existing references:

- 18" snag with tags, bears North 64° West, a distance of 34.1 feet. set washer, L.S. 72306.
- 30" D.fir with tags and washer, bears North 34° East, a distance 14.5 feet.
- 24" D.fir with tags and washer, bears South 7° East, a distance of 32.7 feet.
- 18" D.fir with tags, bears South 51° West, a distance of 26.2 feet. set washer, L.S. 72306.

REMARKS: (History of Corner, etc.)

- 8/1935 - U.S.C.E SET 3" BRASS MONUMENT, BONNEVILLE LANDS PROJECT, MAP 0-7-4 OHR
- 3/1977 - U.S.C.E. FOUND 3 1/4" BRASS CAP, L.S. 460 ON C.S.77033.

DIRECTIONS TO CORNER: FROM WYETH CAMPGROUND ENTRANCE HEAD WESTERLY ON WYETH ROAD APPROXIMATELY 1.3 MILES TO A GRAVEL PULLOFF ON THE NORTH SIDE OF THE ROAD. MONUMENT IS NORTHERLY INTO THE WOODS APPROXIMATELY 250 FEET.

NAME: ERIK M. CARLSON

DATE: JULY 20, 2022

TITLE: TERRA SURVEYING

REGISTRATION NO. OR PLS 72306

SECTION OR SUBDIVISION

$\frac{34}{3} \frac{35}{2}$

CORNER No. 758

TWP... 2 N., RANGE... 8 E. ____, W.M.

CORNER DESCRIPTION

set 30d spike
in Blazed 12" fir

set 30d spike.
in Blazed 12" fir



SEC COR

Ed by Clair Pense

US Army Corps Engs

Conc Mon/Brass Cap

in 1976

see Survey

File # 7656

W.O. REF. set 30d spike
in Blazed 20" fir

set 30d spike.
in Blazed 18" fir

CARD..... OF