

SECTION OR SUBDIVISION 34 $\frac{33}{4}$ / $\frac{34}{4}$

CORNER No. 733

TWP. 1N., RANGE 9E, W.M.

CORNER DESCRIPTION

Sk1 cor Sec 34

FD 1/2" T.P.

Bearing Tree

in NE. Quadrant

fd down. Tree is

a 20" Buckskin Fir

log scribes still

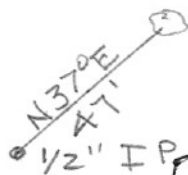
visible. No other

trees fd.

10/25/76 ack

CARD.....

OVER →



WRONG
W.D. 10/11/84
1/2" on
D.L. survey
log
USGS

W.O. REF. 194

- Found =
- 1) Stamp of 20" I.F. with axe marks - S. 22° E. - 9.9'
 - 2) Uprooted 18" W.F. with scribing visible - N. 23° E. - 40.26'
 - 3) Stamp of 22" I.F. - N. 36° W. - 67.98'
 - 4) Bent 1 1/2" I.P. - N. 70° W. - 1.25'
 - 5) 1/2" I.P. - N. 80° 06' 20" W. - 10.75'



- Set =
- 1) Set 3" Aluminum Cap stamped
 - 2) 5" I.F. - N. 28° E. - 35.8' - scribed "TIN R9E 534 SCBT"
 - 3) 6" Noble - N. 30° W. - 26.4' - scribed "TIN R9E 533 SCBT"

↑

From DLC Survey
1983

(733)

996715
996716