

SECTION OR SUBDIVISION

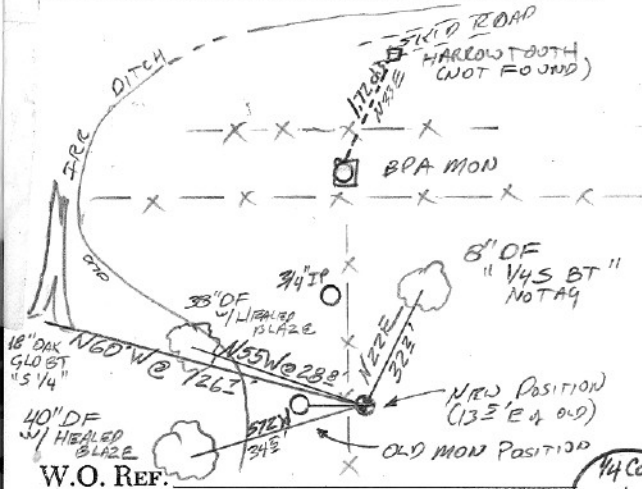
1/4 32 & 33

CORNER No.

697

TWP. 3N, RANGE 10 E, W.M.

CORNER DESCRIPTION



11/15/90: MOVED 2" x 30" IP
 w/ ALUMINUM CAP 13 1/2' EAST of
 OLD POSITION; 3' ± E of FENCE,
 40' ± S of N EDGE of CLEARING;
 26' ± E of DITCH; SCRATCHED
 1990 on CAP.

1/4 COR
 32 & 33
 1500
 T.S. RIDE

CARD

OF

(SEE BACK) 2

W.O. REF.
 BOOK 1-90, pg 112

In September 1990 HRC searched around this corner as there has always been a question to it. JLH proportioned the corner; BPA "set monument" at the railroad position (at the assumed JLH position); there is also record of a 2" I.P., and there is a 3/4" I.P., with history, to the North. In October, we found the BPA monument. It fits the JLH description to the ditch and topography; no BT's could be found. JLH found a harrow tooth, N 33 E @ 1.72 chs; this position falls in a skid road & was not found. The BPA monument doesn't fit the found BT at all; that and the fact that the three hacks are not present on the BT with the found scribing, "S 1/4", confirms it is a GLO BT. The monument had been set at 1.72 chs. from the BT, due to a transcription error, rather than 1.92 chs. as per GLO; therefore we reset the monument at 1.92 chs. from the GLO BT, and re-tied the existing BTs in November 1990; 1990 was scratched on the aluminum cap.

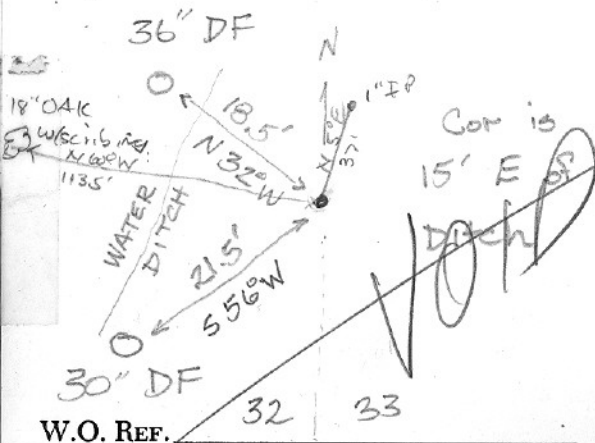
r 1990 HR
question t
the railro
f a 2" I.P.
er, we fou
he ditch a
tooth, N
found. Th
ne fact tha
scribing,
been set
than 1.92 c
.92 chs. fi
1990 was

SECTION OR SUBDIVISION

1/4 COR 32(33) CORNER No. 697

TWP. 3N, RANGE 10E, W.M.

CORNER DESCRIPTION



COR IS 2" I.P.

36" LONG ALUMINUM
CAP SET 30" IN
GROUND.

36" DF N 32° W 18.50'

30" DF S 56° W 21.50'

1" IP N 5° E 37'

CARD 2 OF 1