

LAND CORNER MONUMENT RECORD

INDEX FILE No. E1 *USDA-FOREST SERVICE*

LOCATION

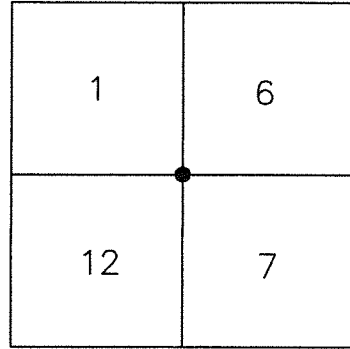
CC 691

HOOD RIVER COUNTY
STATE OF OREGON
WILLAMETTE MERIDIAN

R. 9 E.

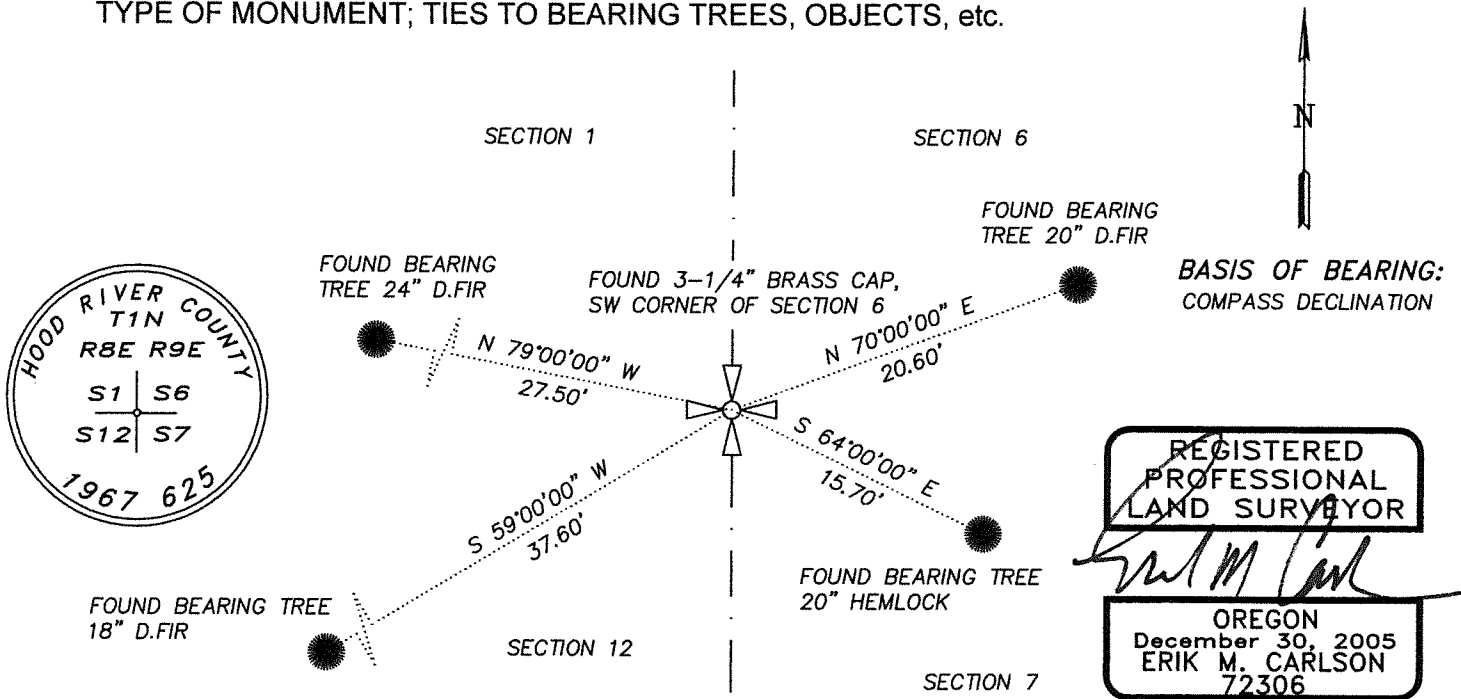
T.
1
N.

| | | | | | | |
|--|----|----|----|----|----|----|
| | | | | | | |
| | 6 | 5 | 4 | 3 | 2 | 1 |
| | 7 | 8 | 9 | 10 | 11 | 12 |
| | 18 | 17 | 16 | 15 | 14 | 13 |
| | 19 | 20 | 21 | 22 | 23 | 24 |
| | 30 | 29 | 28 | 27 | 26 | 25 |
| | 31 | 32 | 33 | 34 | 35 | 36 |
| | | | | | | |



TOWNSHIP 1 NORTH RANGE 9 EAST SECTION 6 SW 1/4 CORNER

TYPE OF MONUMENT; TIES TO BEARING TREES, OBJECTS, etc.



FOUND 3-1/2" SOUTHWEST CORNER, SECTION 6, CORNER CARD #691

UPDATED CORNER NOTES:

- From which
- A 24" D.Fir (existing BT) bears North 79° West a distance of 27.5' feet from Corner. Existing BT was painted with red band. Existing blaze was painted red. Set washer and nail L.S. 72306.
 - A 20" D.Fir (existing BT) bears North 70° East a distance of 20.6' feet from corner. Existing bt was painted with red band. Existing blaze was painted red. set washer and nail l.s. 72306.
 - A 20" Hemlock (existing BT) bears South 64° East a distance of 15.7' feet from corner. Existing bt was painted with red band. Existing blaze was painted red. Set washer and nail L.S. 72306.
 - A 18" D.FIR (existing BT) bears South 59° West a distance of 37.6' feet from corner. Existing BT was painted with red band. Existing blaze was painted red. set washer and nail L.S. 72306.

REMARKS: (History of Corner, etc.)

10/1969- CORNER RE-SET WITH BRASS CAP BY HOOD RIVER COUNTY (CORNER CARD #691).

EVIDENCE FOUND:

- 18" FIR N70°E-20.6'
- 18" HEMLOCK S60°E-15.2'
- 12" FIR, S59°W-37.6'
- 20" FIR, N79°W-27.5'

11/1980- SURVEY BY BISHOP, LS.896 RECOVERED BRASS CAP (C.S.80091).

7/91- SURVEY BY HAGEDORN, LS.733 (C.S.92078)

REFERENCE:

- 18" FIR N70°E-20.6'
- 18" HEMLOCK S60°E-15.2'
- 12" FIR, S59°W-37.6'
- 20" FIR, N79°W-27.5'

DIRECTIONS TO CORNER: FROM INTERSECTION OF NF ROAD No. 2810 AND PUNCH BOWL ROAD TRAVEL WESTERLY ON 2810 APPROXIMATELY 7 MILES TO AN EVIDENT LOGGING CLEAR CUT LINE. CORNER IS APPROXIMATELY 600' NORTH OF ROAD. FOLLOW POSTED FOREST BOUNDARY SIGNS ALONG EAST SIDE OF CLEAR CUT UP STEEP TERRAIN TO CORNER.

NAME: ERIK M. CARLSON

DATE: DECEMBER 1, 2021

TITLE: TERRA SURVEYING

REGISTRATION NO. OR PLS 72306

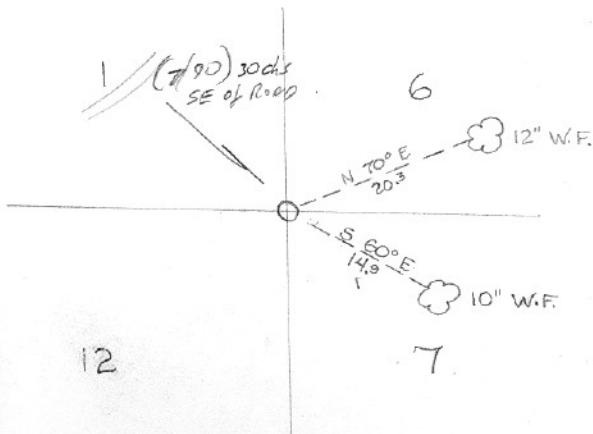
SECTION OR SUBDIVISION

| | |
|----|---|
| 1 | 6 |
| 12 | 7 |

CORNER No. 691

TWP. 1N, RANGE 8E9, E, W.M.

CORNER DESCRIPTION



CORNER IS 2" I.P. WITH BRASS CAP.

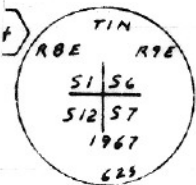
VISITED 7-90 HRC FORESTRY FOUND AS NOTED; BRUSHED, FLAGGED, BLAZED LINE N/S FROM COR. (ZACHA)

W.O. REF.

Over →

CARD OF

691



MMD. 20.3'
14" Wd. Fir N70E^A scribed TINR9E56

12" Hemlock SCOE 14.9' scribed
TINR9E57

Bress Cap is N 21-46-00 E 1.17' from
calculated position



From Bishop Survey

80091

691

OREGON CORNER RESTORATION FORM

Section 6 Township 1 N Range 9 E

County Hood River Date September 13, 2013

CORNER DESIGNATION

- Southwest Corner Section 6, T1N, R9E
- Southeast Corner Section 1, T1N, R8E
- Northwest Corner Section 7, T1N, R9E
- Northeast Corner Section 12, T1N, R8E

- X Condition Report Only
- Not Found
- Renewed
- Unrecorded
- Surveyed In
- Referenced Out

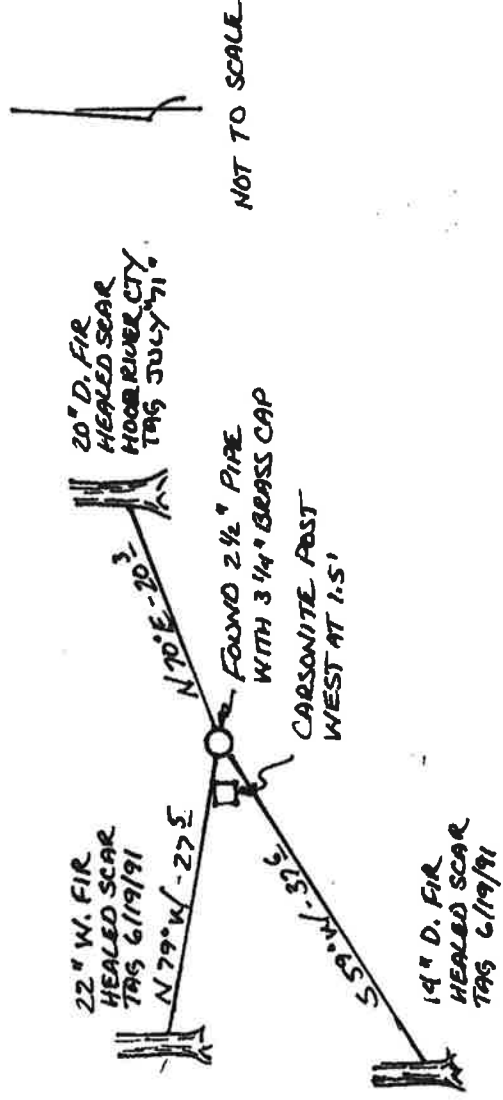
Previous Renewals/Surveys, etc. Corner was established by Newton Clark by GLO survey, contract no. 502, dated 1884, Hood River County in survey CS-1242, dated 1971, noted no original evidence found and set monument. Survey for Mt. Hood National Forest CS-92078, dated 1991 noted found corner and established the noted found references.

Monument(s) & Accessories Found: (Condition and Source)

Found 2-1/2" Pipe with 3-1/4" brass cap, found 20" D. Fir with Hood River Cty tag dated July "71", Found 1991 references as noted on CS-92078.

Monument Detail

Sketch



Monument Set (procedures and Description)

N/A

New Accessories

No New accessories established

Location & Comments
No comments

Compass Declination 16° E
 Firm/Agency:
 Ford Land Surveying
 PO Box 353
 Klickitat, WA 98628
 Party Chief: George Ford
 Notes: Field Book - 2013-4
 Witness: Beverly Ford

Surveyor's Seal



George J. Ford
 Nov 12, 2013
 OREGON
 JULY 17, 1988
 GEORGE J. FORD
 #2210
 GJP 12/31/13