

SECTION OR SUBDIVISION

CS 1/16 SEC. 17

CORNER No.

681

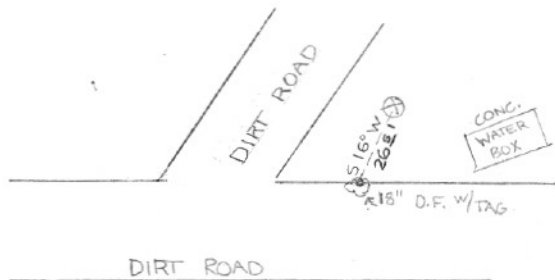
TWP. 15, RANGE 10E, W.M.

CORNER DESCRIPTION

CORNER IS 5/8" REBAR

WITH LEAD CAP IN MOUND

OF STONES



W.O. REF.

CARD

1

OF

23

SECTION OR SUBDIVISION CS 1/16 SEC. 17

TWP. 15, RANGE 10 E, W.M.

CORNER No. 681

CORNER DESCRIPTION

OLD COR. LOST. RESET

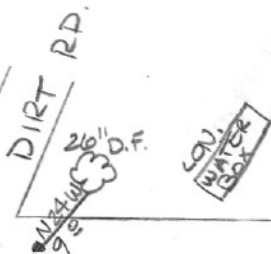
MAY 1980 HRC

COR IS IRON ROD W/

YELLOW PLASTIC CAP.

26" D.F. W/ TAG

SCRIBED "1/16 CS"



DIRT RD

W.O. REF.

CARD 2 OF 3

SECTION OR SUBDIVISION C-S 4/16 517

CORNER No. 681

TWP. 15, RANGE 10 1/2, W.M.

CORNER DESCRIPTION



11-1-00 ^{CENT} 110 IR / LEAD CAP
 @ 9' SOUTHWEY 26"
 DF w/ HEALED FACE &
 "X" ON EAST SIDE;
 DISCREPANCY w/ PREVIOUS
 MARK

W.O. REF. _____

CARD 3 OF 3