

SECTION OR SUBDIVISION

31 | 32

CORNER No.

444-1

TWP. 1 N, RANGE 10 E, W.M.

CORNER DESCRIPTION

1. 1/2" GLO Brass
cap in Road as
located by TEC
in 1969'

Brass Cap was
set by G.L.O. in
1940.

ACK Mar 1977

W.O. REF.

CARD 2 OF 2

SECTION OR SUBDIVISION

31-32

CORNER No.

SEE ALSO
447 (648)

TWP. 1N, RANGE 10, W.M.

CORNER DESCRIPTION

R.P. Cap on $\frac{5}{8}$ " I.R.

Fd. G.L.D Brass Cap

53.62
N 55°W

R.P. Cap on
I.R. 3'W

y - 677,562.56

59.86° E of
N 70½°

x - 1,715,844.38

Rd.

27.30
S 26°W

36.87
S 45°E

R.P. - Cap on
I.R. 3'N of T

R.P. - Cap on
I.R. - 1'W of Pine T

W.O. REF. 30" elm blazed
at base

4027 Base line T.K.C.

CARD

1

OF

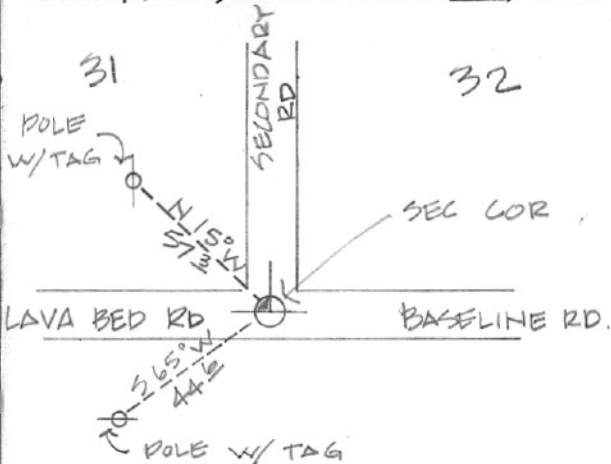
2

SECTION OR SUBDIVISION SEC. COR. 31/32 CORNER No. 648

TWP. 14, RANGE 10E, W.M.

CORNER DESCRIPTION

FD. 1/2" I.P.



W.O. REF. _____

7-72 HRCO

note 1/2" I.P. is
not the section
Cor. ack Mar 1977

CARD _____ OF _____