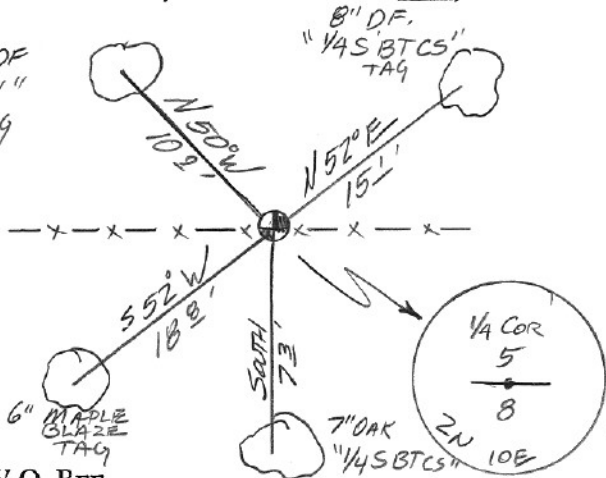


SECTION OR SUBDIVISION $\frac{1}{4}$ cor 5/8

TWP. 2N....., RANGE 10..... E, W.M.

3" DF
"X"
TAG



6" MAPLE
GLAZE
TAG

8" DF.
"1/4 S BTCS"
TAG

7" OAK
"1/4 S BTCS"

W.O. REF. _____

FOBK 1-91, pg 54 & 1-90, pg 34

CORNER No. 639.....

6/13/91

CORNER DESCRIPTION

SET IP/BC @ FD. NAIL BY
LB 1028 IN E/W FENCE LINE
@ VLLH POSITION; REMAINS OF
OLD N/S FENCE TO N & S;
NO STONES FOR MOUND AVAILABLE;
COR IS 1/4 MILE EAST OF PROPRAN
HILL RA ON SOUTH FACING
SLOPE, 75' ± N/E of PROPRAN
POSITION.

CARD 1..... OF 1.....

Cor#639 HRC had single proportioned this corner in the early 1970's. Dan Cron performed a survey in section 5 in 1984 and, using JLH notes, found an old fence intersection that he felt better represented the original position. HRC surveyor agreed, as the fence intersection fit Henderson and P M Morse measurements much better than the single proportion. HRC set a pipe and brass cap in 1991.