

SECTION OR SUBDIVISION 36/31 ~~21/4~~ COY

CORNER No. 618

TWP. 3N, RANGE 10/11 E, W.M.

CORNER DESCRIPTION

1 1/2" I.P.

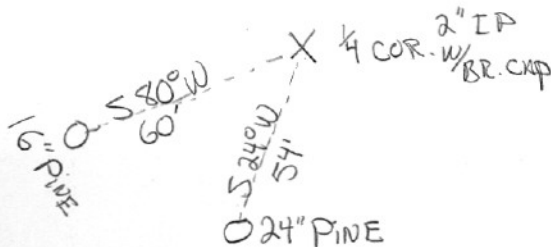
RESET 2" IP w/ BRASS CAP

Tags on 2 TREES

ONE 24" PINE S 24° W @ 54'

ONE 16" PINE S 80° W @ 60'

3-15-78 (PTH)



W.O. REF. T.E.C. W.O. # 4455

CARD 1 OF 1

Cor#618 ¼ cor 36/31 3N 10/11E

JLH set stone in 1904. Old County corner book (1940's) shows stone and 1 1/4" pipe.
HRC fd 1 ½" pipe in 1978 and set a 2" pipe and cap.