

N OR SUBDIVISION

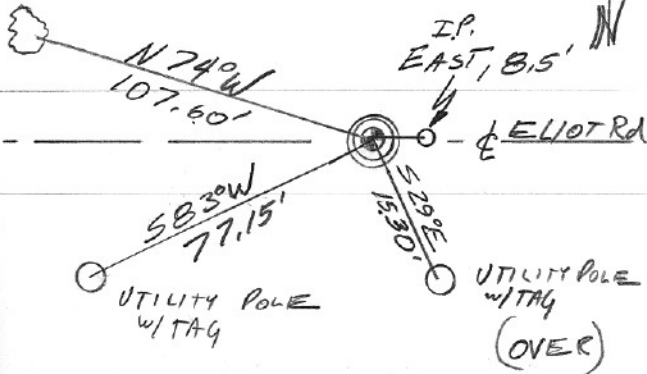
36/1

CORNER No.

582

TWP. 3/2 N, RANGE 10 E, W.M.

18" OAK



CORNER DESCRIPTION

10-30-89

AFTER INTENSIVE RESEARCH (SEE NARRATIVE IN S1, T2N R10E) HRC. MONUMENTED A POINT 8.5' WEST OF FOUND PROPERTY CORNER PIPE. SET B.C. IN 2" I.P. IN CONCRETE IN MONUMENT CASE.

W.O. REF.

TEC W.O. #4455

C.S. Book 89-1 pg 32

CARD

1

OF

2



Cor#582 ¼ cor 36/1 3N/2N 10E

This Corner has no direct tie to the original GLO corner, but extensive research has proven the position currently monumented to be correct. There was considerable confusion in the 1960's and 1970's as to the location of this corner due to the existence of a property corner (1/2" iron pipe) 8.5 feet east of the ¼ corner. HRC monumented the correct position in 1989.

SECTION OR SUBDIVISION

1/4 COR SECS 16

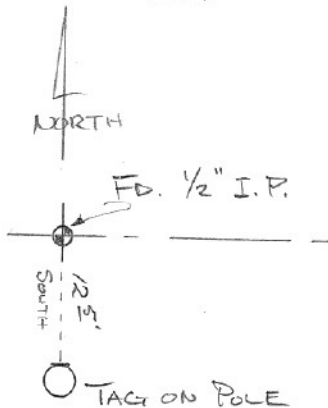
CORNER No.

582

TWP. 2 N, RANGE 10 E, W.M.

CORNER DESCRIPTION

ELLIOT RD.



NORTH 1/4 OF
 SEC. 1, 2 N 10 E
 FD. 1/2 I.D. IRON
 PIPE IN E OF
 ELLIOT RD, APPROX.
 3" DEEP.

SEPT. 1972 H.R.Co.

W.O. REF.

OVER →

CARD

OF

HRC Set now case 8.5
west of this $\frac{1}{2}$ " I.P. in 1989.

See narrative filed in
SEC 1 2 N 10 E.