

SECTION OR SUBDIVISION

10 | 11
15 | 14

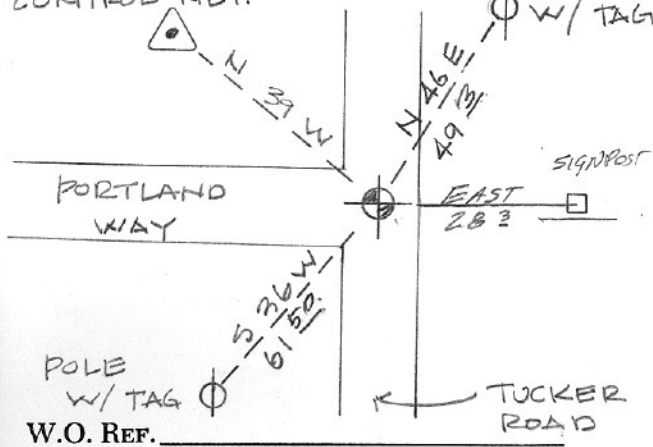
CORNER No.

580 - A

TWP. 2 N., RANGE 10 E., W.M.

CORNER DESCRIPTION

PORTLAND WAY ECC.
CONTROL NET.



FD BRASS CAP

SET IN MON. CASE

TAGGED 2 UTILITY
POLES

11-6-72 H.R.CO.

RAISED MON. BOX; RETIRED R.P.s
5/16/91

W.O. REF.

CARD..... OF

Cor#580A sec cor 10/11/14/15 2N10E

Goit found an iron rod and two orig bt stumps in 1898. There is no solid chain of evidence linking Goit's corner to the present monument, but there has never been any controversy regarding this corner.