

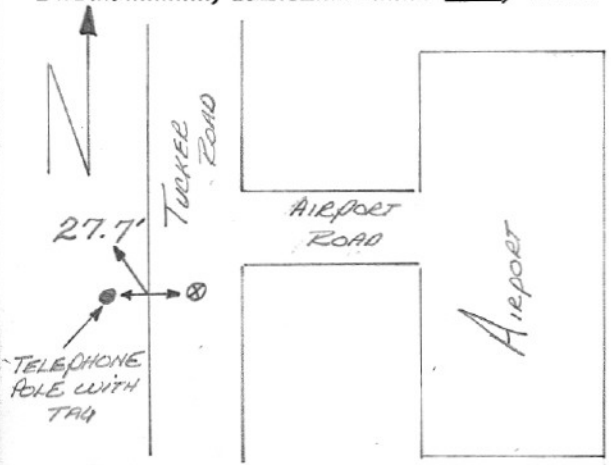
SECTION 11

SECTION OR SUBDIVISION $\frac{1}{4}$ COR SEC'S 10-11

CORNER No. 579

TWP. 2.N., RANGE 10.E., W.M.

CORNER DESCRIPTION



WEST $\frac{1}{4}$ CORNER
 COMMAND TO 10-11
 FD PIPE
 MAY '72

~~see card~~
~~# 895~~
~~orig cor fld~~
~~1981~~

orig cor is 18'
 north of pipe

W.O. REF.

CARD 1 OF 3

SECTION OR SUBDIVISION $\frac{1}{4}$ COR 10 | 11

CORNER No. ~~595~~ 579

TWP. 2N, RANGE 10 E, W.M.

CORNER DESCRIPTION

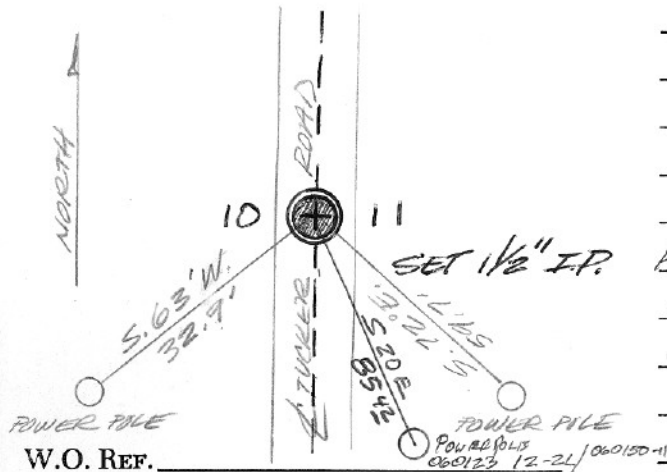
FD. 10" X 14" X 16"
ROCK AS SET BY
GOIT FROM ORIG
BT. 4/6/81
SET 1 1/2" I.P

FOUND 5/16/91: STRADDLES, RPAs
SHOWN.

visited 7/94. set RR spike
directly over pipe & poured
concrete around spike
to bring up flush w/ AC.

CARD 2 OF 3

over ->



W.O. REF.

FD. BY ARNOLD, DALEY
& BLUMENSTEIN 4/6/81

Goit Stone is 18' north
of pipe. Pipe may have
been set by OSHD in
the 1940's or 50's.

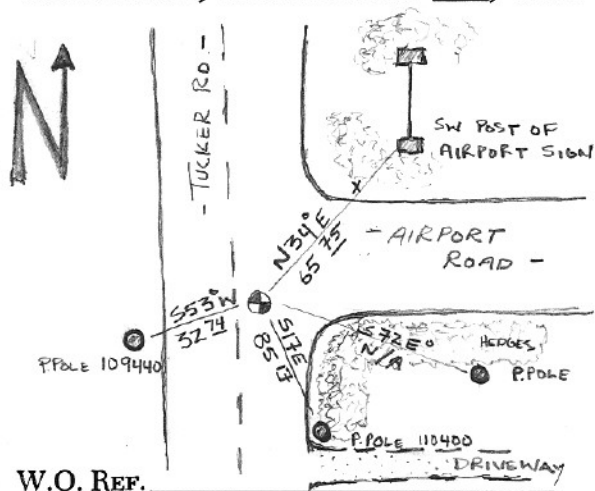
SECTION OR SUBDIVISION

 $\frac{1}{4}$ CORNER SEC
10 + 11TWP. 2N, RANGE 10E, W.M.

CORNER No.

579

CORNER DESCRIPTION



W.O. REF.

FOUND RAILROAD SPIKE AND
 RP CALCS, FOUND $1\frac{1}{2}$ "
 IP 6" BELOW SURFACE AND
 RP CALCS
 PLACED BRASS CAP IN
 MONUMENT BOX WITH
 RISER - CEMENTED IN
 8-30-00
 - RJ, RW, LP -

CARD

3

OF

3

Cor#579 ¼ cor 10/11 2N10E

HRC found Goit stone in 1981 & set 1 ½" pipe over stone. Goit had set stone from orig evidence. A pipe 18 feet south of the stone had been used for this corner since the 1930's. Current monument is a brass cap in mon case directly over HRC pipe and stone.