

SECTION OR SUBDIVISION C 1/4 Sec. 4

CORNER No. 568

TWP. 20, RANGE 10 E, W.M.

CORNER DESCRIPTION

C 1/4

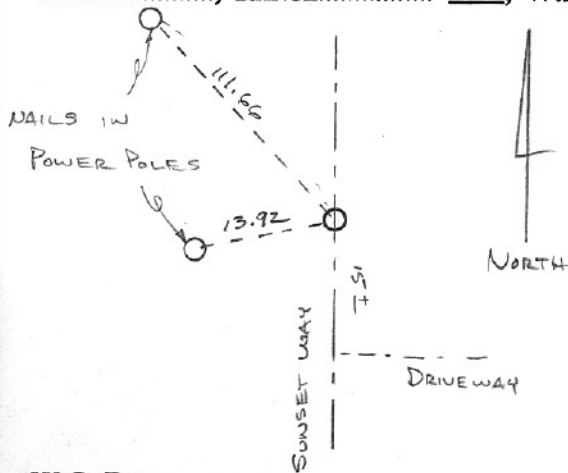
FD. 1" IRON PIPE IN
ROADWAY & TAG ON POLE
14' WEST OF COR.

MARCH 1972

BRASS CAP IN MONUMENT
CASE. SET BY HRC.

7/5/88 HRC visit. detailed
on back →

CARD 1 OF 1



W.O. REF. _____

N.S. Co. #1003-H-71

PPW/tag+
shiner

13.80'
N76°W

C4

BRASS CAP
MON. CASE

N55°E
22.18'

PPW/tag+
shiner

visited on 7/5/88 payday
COR. IS A BRASS CAP IN A
MON. CASE FROM WHICH A
POWERPOLE BEARS N55°E
22.18' w/tag+shiner, ALSO
A P.P. w/tag+shiner BEARS N76°W
13.80'