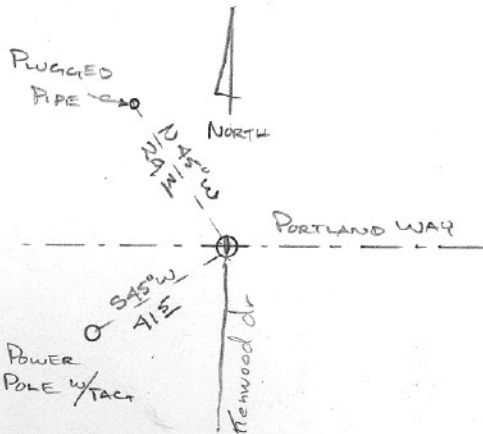


SECTION OR SUBDIVISION $\frac{1}{4}$ Cor $\frac{9}{16}$

CORNER No. 561

TWP. 2 N., RANGE 10 E., W.M.

CORNER DESCRIPTION



FD. 1" PIPE, 4" DEEP IN
NORTH TRAFFIC LANE.

MARCH - 72

BEARS CAP TO REMOVED
CASE - Set by H.K. Co.

W.O. REF.

CARD 1 OF 2

SECTION OR SUBDIVISION

$\frac{1}{4}$ cor $\frac{9}{16}$

CORNER No.

561

TWP. 2 N, RANGE 10, W.M.

CORNER DESCRIPTION

↑
N

○ WATER VALVE Box (Looks like a
mon case) 1987

24.47

BC. in Mon.
case.

S
39.80
W

P. Pole

nail w/shiner G. side 2' up.

W.O. REF.

Field Bk 1-87

set 3" Brass Cap
in Mon case
over stone.
Feb. 1984

CARD 2 OF 2

Cor#561 ¼ cor 9/16 2N10E

JLH fd stone and orig bt in 1909. HRC set brass cap in mon case over found stone in 1984.