

SECTION OR SUBDIVISION

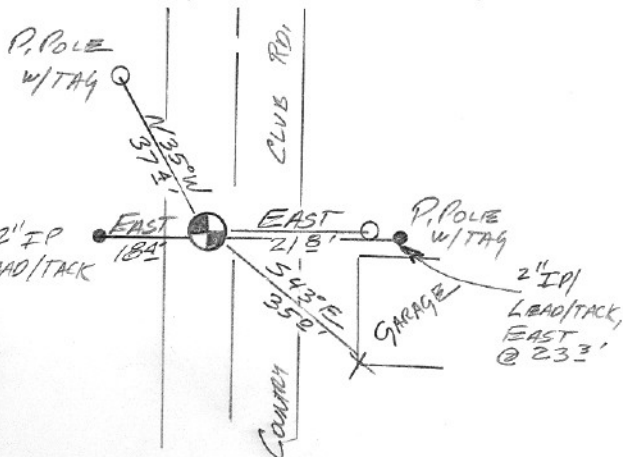
8/9/16/17

CORNER No.

560

TWP. 2N, RANGE 10 E, W.M.

CORNER DESCRIPTION

FO: 3/4" IRON ROD, 2" 3-72DEEP IN WEST TRAFFIC LANEREPLACED WITH WATER BOX, BCFO: BC IN WATER BOX 6-20-90IN WEST LANE of COUNTRYCLUB RD, N of OAK GROVESTORE.

W.O. REF. _____

FIELD BK 1-90 pg 56

CARD

OF

Cor#560 HRC found pipe in 1972 and replaced with a brass cap in mon case. Two old
rp's 18' west and 23' east (as per 1940's corner index) were found in 1990.