

SECTION OR SUBDIVISION 528 | 527

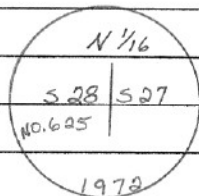
TWP. 2 N., RANGE 10 E., W.M.

CORNER No. 553

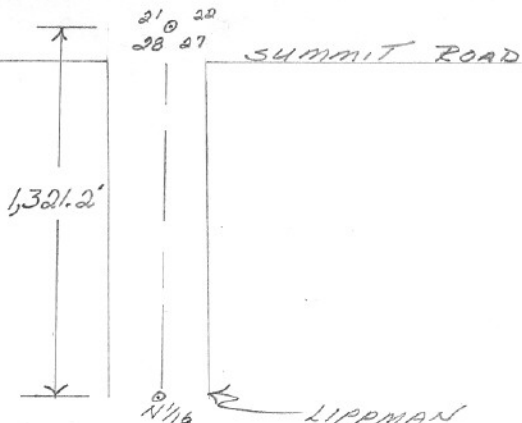
CORNER DESCRIPTION

N. 1/16 C.O.P. BETWEEN
528 & 527

COR. IS A BRASS-CAP
SET IN A WATER BOX.
BRASS-CAP IS MARKED:



CARD..... OF



W.O. REF.