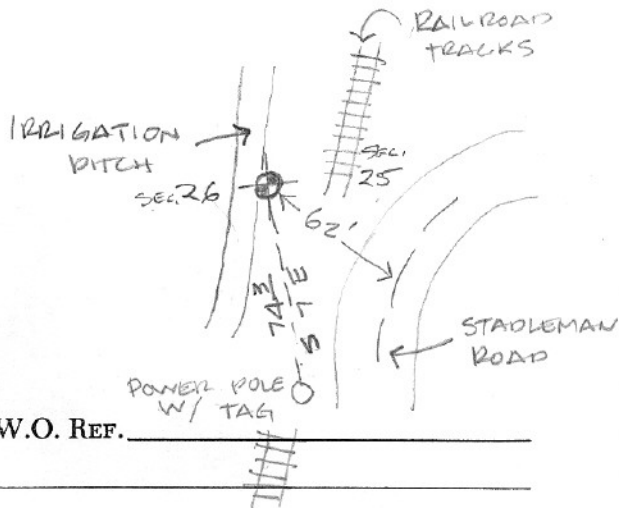


SECTION OR SUBDIVISION 26/25<sup>1/4</sup> CORN

CORNER No. 550

TWP. 2 N, RANGE 10 E, W.M.

CORNER DESCRIPTION



W.O. REF. \_\_\_\_\_  
\_\_\_\_\_  
\_\_\_\_\_

1/4 CORNER BETWEEN  
SEC 26 & 25  
FD. 2" IRON PIPE  
ON EAST EDGE OF  
IRRIGATION DITCH

21 DEC. 1971

CARD 1 OF 2

SECTION OR SUBDIVISION

TWP...2N....., RANGE...10..... E, W.M.

SEE BACK SIDE

W.O. REF. \_\_\_\_\_  
\_\_\_\_\_  
\_\_\_\_\_

CORNER No. 550.....

CORNER DESCRIPTION

1/4 CORNER BETWEEN  
SEC 26 & 25. CORNER  
IS A 2" IP IN THE  
CENTER OF THE IR-  
RIGATION DITCH,  
2 REF. MON. SET. BOTH  
RP'S ARE 2 1/2" BRASS  
CAPS EPOXY GLUED IN  
CONCRETE. NORTHERLY RP  
IS SET IN CONC. ENTRANCE  
TO STADLEMAN BLDG. RP #2  
IS ON THE EAST EDGE OF CONC.  
CARD 2 OF 2  
CONCRETE APRON OF MAN HOLE NEAR  
PROPANE TANK. SEE DRAWING ON BACK.

1/4 CORNER

DRIVEWAY

STADLEMAN'S

R.P. #1  
INTERIOR ANGLE  
40-56-42

STADLEMAN ROAD

IRRIGATION DITCH  
RAILROAD

MANHOLE  
RP #2  
INTERIOR ANGLE  
15-33-12

PROPANE  
TANK

CONC. PAD

DISTANCES:

RP TO RP: 215.39'

RP #1 TO 1/4 COR: 69.24'

RP #2 TO 1/4 COR: 169.30'

NOTE:

RP.'S ARE 2 1/2" BRASS CAPS  
SET FLUSH WITH CONCRETE.

1/4 CORNER IS A 2" IRON PIPE  
IN THE IRRIGATION DITCH.

HOOD RIVER COUNTY CORNER RESTORATION FORM

SECTION 26, TOWNSHIP 2 NORTH RANGE 10 EAST, W.M.

DATE: MAY 27, 2014

CORNER DESIGNATION: EAST QUARTER CORNER

PREVIOUS RENEWAL: CORNER CARD NO. 550

MONUMENT FOUND: FOUND 1 1/2" IRON PIPE AT SE'LY EDGE OF CREEK/DITCH.  
0.4' BENEATH BED OF CREEK.

ACCESSORY FOUND: FOUND STEM OF CORNER CARD NO. 550 RP #1 BRASS CAP  
CAP IS MISSING.  
FOUND STEM IN CONCRETE RAMP TO STADELMAN FRUIT BUILDING.

NEW ACCESSORY: SET 2 1/2" BRASS CAP IN RECENTLY CONSTRUCTED 6 FOOT DIAMETER  
CONCRETE VAULT LID AT ODELL SANITARY DISTRICT LIFT STATION.  
SET BRASS CAP WAS RECOVERED AT TIME OF DEMOLITION OF AN EXISTING  
CONCRETE VAULT AND RESET IN THE NEW VAULT AT A DIFFERENT POSITION.  
PREVIOUS DESIGNATION FOR CAP WAS CORNER CARD NO. 550 RP #2.

WYEAST SURVEYS  
KEVIN DOWD  
4399 WOODWORTH DRIVE  
MT HOOD-PARKDALE OR 97041



RENEW: MAY 29, 2015

