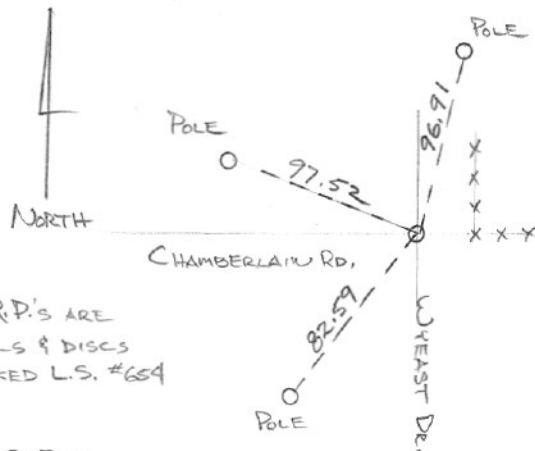


SECTION OR SUBDIVISION CEN. 1/4 SEC. 22 CORNER No. 546

TWP. 2N., RANGE 10 E, W.M.

CORNER DESCRIPTION



SET MONUMENT NAIL  
IN  $\frac{1}{4}$  C @ INTERSECTION  
OF WYEAST & CHAMBERLAIN  
ROADS.

W.O. REF. \_\_\_\_\_

#1013-0-71 N.S.Co.

HAWTHORNE

CARD 1 OF 1