

SECTION OR SUBDIVISION

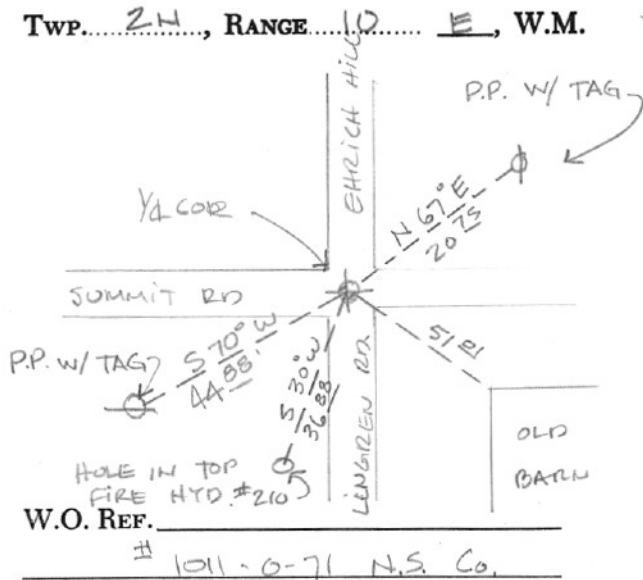
1/4 COR. $\frac{23}{26}$

CORNER No.

542

TWP. 24, RANGE 10, E, W.M.

CORNER DESCRIPTION



FD 1 1/2" STEEL SHAFT
REPLACED WITH
BRASS CAP IN WATER
BOX.

26 APRIL 1974
HRC.

CARD 2 OF 2