

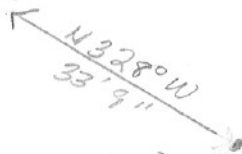
SECTION OR SUBDIVISION 1

CORNER No. 522

TWP. 14, RANGE 9 E, W.M.

CORNER DESCRIPTION

34" DF
STUMP



WC 1/6 SET BY G. FREY

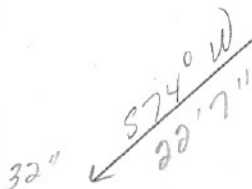
RE-SET A. HUTSON

COUNTY FOREST

1/2" IP / CAP

HOOD RIVER CO - U.S.

PLY 1/6 40 N 60 W



32" DF
STUMP

W.O. REF.

CARD OF